

# AXT13 13W

1300 LUMEN LED

MANUFACTURED IN THE UNITED STATES - IBEW



PRODUCT LISTED  
BY A NATIONALLY  
RECOGNIZED  
TESTING  
LABORATORY



The AXT13 is designed around the Xicato™ LED remote phosphor module. This module produces an even field of illumination for the most demanding applications. The AXT13 is ideal for museum and retail lighting where a low wattage, high output LED fixture would be required. Xicato™ LEDs exceed ANSI specifications by maintaining tight color consistency over the life of the LED module.

The AXT13 is available in standard black, white, or silver finishes. Custom colors are available upon request.

## LED SPECIFICATIONS

- Xicato™ cold remote phosphor LED module
- Color Temperature Options: 2700K, 3000K, 3500K, 4000K
- CRI: 83 standard or 98 optional (R9=96)
- Lumen Maintenance: 86% of initial lumen output at 50,000 hours on LM-80 testing
- SDCM: 1 x 2 MacAdam Elipse. 50 kelvin tolerance
- No UV or IR

MODULE	TOTAL WATTAGE*	LUMENS	EFFICACY (LM/W)	CRI
83	13	1235	95	83
98	17	1235	67	98

\* Total wattage equals LED plus driver. Delivered lumen may vary depending on LED module, color temperature, optics, and accessories. Testing done with 3000K LED array.

## CONSTRUCTION

- Steel & aluminum housing with black, white or silver finish
- 0-180° tilt, 360° rotation
- Accepts up to 3 accessories
- Weight: 3 lbs.

## ELECTRICAL

- Integral electronic driver
- 100-277V, 50/60Hz
- Meets FCC 47 CFR Part 15/18 Requirements

## DIMMING

- Trailing edge (ELV): 120V only
- Leading edge (Triac): 120V only
- 0-10V: 120-277V with surface mounting. For track applications, use E-series 2-circuit with data bus.

## OPTICS

- 20°, 40°, and 60° Field-changable reflectors
- CBCP: 4950 @ 20°  
2750 @ 40°  
1495 @ 60°

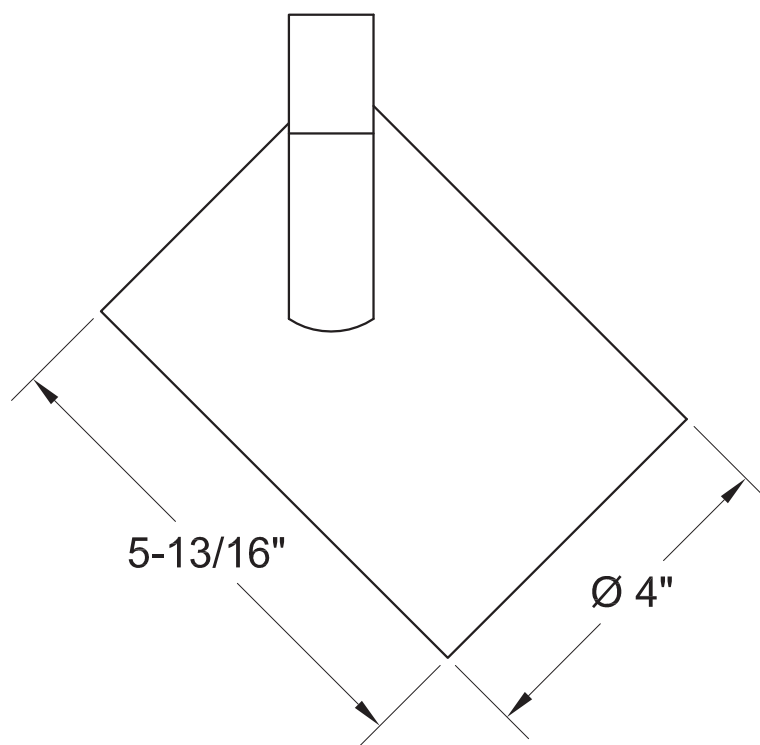
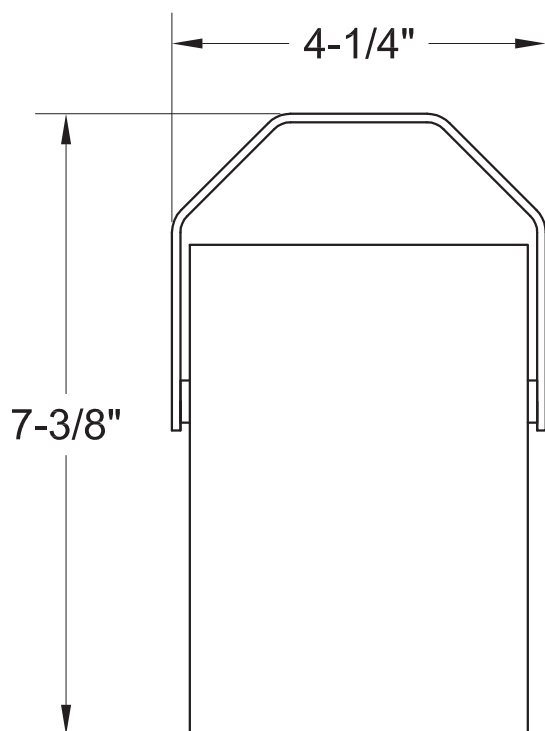
# AXT13 13W

1300 LUMEN LED

MANUFACTURED IN THE UNITED STATES - IBEW



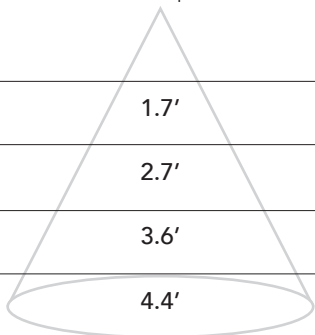
PRODUCT LISTED  
BY A NATIONALLY  
RECOGNIZED  
TESTING  
LABORATORY



## PHOTOMETRIC DATA

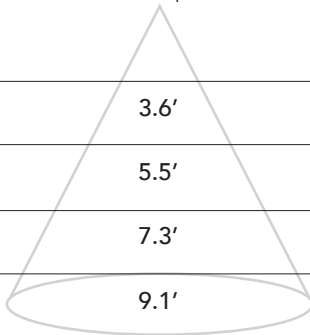
### 20° Spot Reflector

Distance	Beam Spread	Footcandles
5'	1.7'	200
7.5'	2.7'	89
10'	3.6'	50
12.5'	4.4'	32



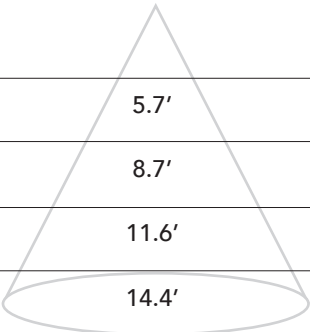
### 40° Spot Reflector

Distance	Beam Spread	Footcandles
5'	3.6'	108
7.5'	5.5'	48
10'	7.3'	27
12.5'	9.1'	17



### 60° Spot Reflector

Distance	Beam Spread	Footcandles
5'	5.7'	61
7.5'	8.7'	27
10'	11.6'	15
12.5'	14.4'	10



# AXT13 13W

1300 LUMEN LED

MANUFACTURED IN THE UNITED STATES - IBEW



PRODUCT LISTED  
BY A NATIONALLY  
RECOGNIZED  
TESTING  
LABORATORY

## MOUNTING OPTIONS

**AD1** Track adapter for commercial grade 1-circuit track.  
Good for use with small, lightweight fixtures.

**DT2** 2-circuit track adapter for SpecTrack databus. 120V.

**HDT2** Track adapter for SpecTrack 2-Circuit data track.  
277V.

**T1** Track Adapter for commercial grade 1 & 2 circuit track.  
120V. For use with larger, heavier fixtures.

**TA2** Track adapter for G-Series specification grade  
2-circuit track. 120V.

**HTA2** Track adapter for G-Series specification grade  
2-circuit track. 277V.

**TA3** Track adapter for G-Series specification grade  
3-circuit track. 120V.

**CM4** Canopy Mount

**US1** 6-5/8" x 1-1/2" Unistrut Adapter

**TB8** 8" x 8" Portable table base for floor and table use.

**MC** Light duty pipe clamp for small fixtures. For pipes up  
to 1 5/16" O.D.

**MN** Medium duty pipe clamp for small to large fixtures.  
For pipes up to 2" O.D.

**PC9M** Heavy duty pipe clamp for large, heavy fixtures.  
For pipes up to 2" O.D.

## EXTENSION WANDS

SP 12	12" Stem
SP 18	18" Stem
SP 24	24" Stem
SP X	Custom Length

## ACCESSORIES

BD20	Barndoor
LV22	Full Size Louver
XL22	Full Size X Baffle Louver
XH22	Full Size X Baffle Hood
HD22	Hood/Snoot
X00517	Accessory Holder
LV18*	Honeycomb Louver
FX22-26*	Red Filter
FX22-80*	Blue Filter
FX22-64*	Light Blue Filter
FX22-90*	Green Filter
FX22-21*	Amber Filter
FX22-10*	Yellow Filter
FX22-33*	Pink Filter
OF22-9101*	Smoothing Frost Filter
OF22-0S20*	20° Beam Softener
OF22-1060*	Linear Spread 10 x 60 Degree
OF22-0S30*	Beam Soft Filter
OF22-0S40*	40/60 Degree Diffusion
CC18	Coil Cord Option
SC-24	Safety Cable

\* X00517 Required. Wide range of colors available.

## NOTES ON DIMMING

Visit [tslight.com/resources](https://tslight.com/resources) or scan the QR Code.



# SPECIFY:

MODEL	LED MODULE	COLOR TEMPERATURE
AXT13	83 92	27 = 2700K 30 = 3000K 35 = 3500K 40 = 4000K
FINISH	VOLTAGE	OPTICS
B = Black W = White S = Silver CC = Custom Color	100 120 240 277	10 = 10° 20 = 20° 40 = 40° 60 = 60° ZO = 15° - 60°
MOUNTING	DIMMING †	ACCESSORIES
See Mounting Options for Ordering Codes	TE = Trailing Edge LE = Leading Edge 010 = 0-10V ND = Non-Dimming	See Accessory Options for Ordering Codes

Maximum Ambient Temperature: 35°C  
Maximum Operating Angle: 45° from vertical

† See "Notes on Dimming"

# ORDERING INFORMATION

PROJECT:	
LOCATION:	
QUANTITY:	
CONTACT:	
PHONE:	
EMAIL:	

EXAMPLE: AXT13-83-27-B-120-20-T1-LE-BD20

MODEL	LED MODULE	COLOR TEMPERATURE	FINISH	VOLTAGE	OPTICS	MOUNTING	DIMMING	ACCESSORIES
AXT13								