

# LED21P CHELSEA

## PATTERN & FRAMING PROJECTOR

MANUFACTURED IN THE UNITED STATES - IBEW



The **Chelsea** is a miniature 1800 lumen theatrical style gobo and framing projector. It delivers a crisp projection for short to medium applications. The Chelsea is available as a track mount or canopy fixture.

A wide selection of standard patterns (gobos) are available. Custom patterns are also available by simply sending us a PDF of your desired pattern via email.

### LED

---

- Color Temperature Options: 3200K
- CRI: 90
- No UV or IR

### FEATURES

---

- 100-277 Volt available
- 20° - 40° beam spread
- 50,000 hour lamp life
- Framing shutters included
- Stock or custom, steel or glass patterns
- Dimmable (optional)
- Numerous mounting options and accessories

### DIMMING

---

- Trailing edge (ELV): 120-277V
- Leading edge (Triac): 120-277V
- 0-10V: 100-277V use track.
- Casambi: 120 - 277V

### CONSTRUCTION

---

- Aluminum and Steel housing with black or white finish.
- Accepts up to 2 accessories
- Weight: 3 lbs.

### OPTICS

---

- 19°, 26°, 36° and 50° Lens Tube Available
- Adjustable lenses for sharp focus.

### ELECTRICAL

---

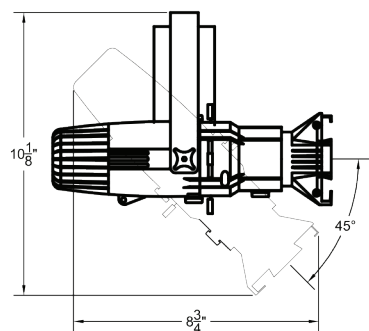
- Integral electronic driver
- 100-277V, 50/60Hz
- Meets FCC 47 CFR Part 15/18 Requirements
- 21 Watts

**Maximum Operating Temperature: 35° C • Maximum Operating Angle: 45° from Vertical**

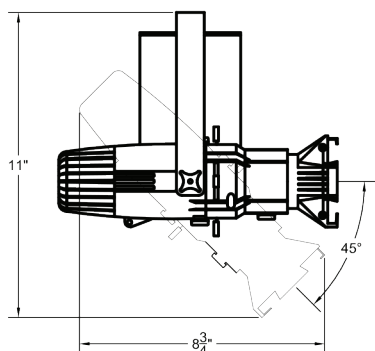
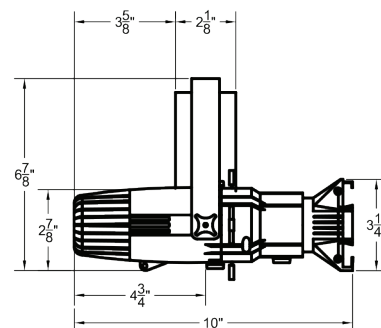
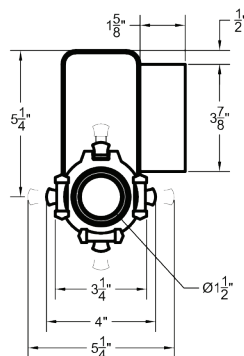
# LED21P CHELSEA

## PATTERN & FRAMING PROJECTOR

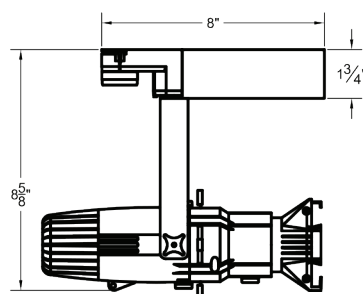
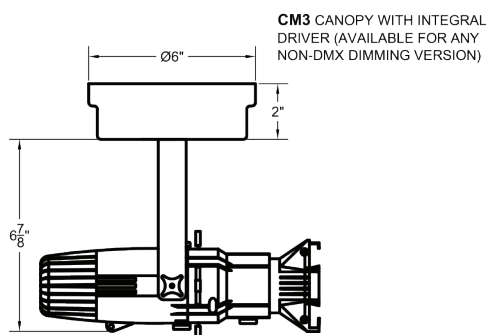
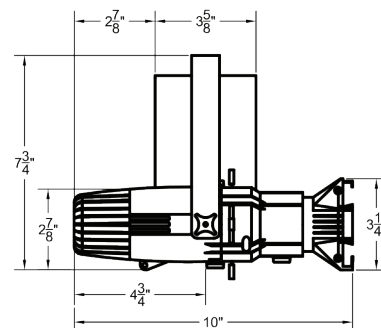
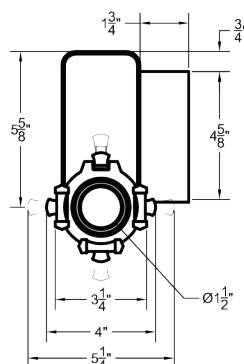
MANUFACTURED IN THE UNITED STATES - IBEW



THESE DIMENSIONS ARE FOR ALL 120-277V ND, LE, TE AND 010 DIMMING VERSIONS



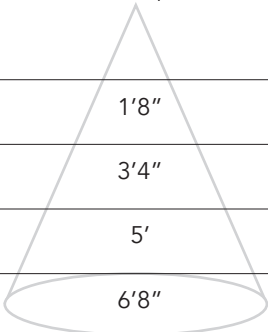
THESE DIMENSIONS ARE FOR ALL 120-277V IP, CS AND 100V 50hz ND AND 010 DIMMING VERSIONS



## PHOTOMETRIC DATA

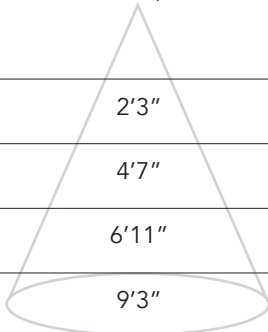
### 19° Lens Tube

Distance	Beam Spread	Footcandles
5'	1'8"	412
10'	3'4"	103
15'	5'	46
20'	6'8"	26



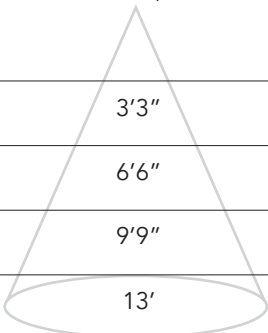
### 26° Lens Tube

Distance	Beam Spread	Footcandles
5'	2'3"	224
10'	4'7"	56
15'	6'11"	25
20'	9'3"	14



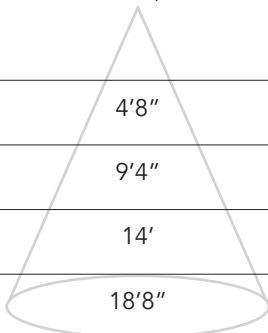
### 36° Lens Tube

Distance	Beam Spread	Footcandles
5'	3'3"	120
10'	6'6"	30
15'	9'9"	13
20'	13'	8



### 50° Lens Tube

Distance	Beam Spread	Footcandles
5'	4'8"	67
10'	9'4"	30
15'	14'	17
20'	18'8"	11



# LED21P CHELSEA

## PATTERN & FRAMING PROJECTOR

MANUFACTURED IN THE UNITED STATES - IBEW



### MOUNTING OPTIONS

**DT2** 2-circuit track adapter for SpecTrack databus. 120V.

**HDT2** Track adapter for SpecTrack 2-Circuit data track. 277V.

**AD1** Track Adapter for commercial grade 1-circuit track. 120V. For use with lightweight fixtures.

**T1** Track Adapter for commercial grade 1 & 2 circuit track. 120V. For use with larger, heavier fixtures.

**TA2 / HTA2 (277V)** Track adapter for G-Series specification grade 2-circuit track. 120V or 277V.

**TA3** Track adapter for G-Series specification grade 3-circuit track. 120V.

**GAC** 3-Circuit track adapter for databus pulse track. 120V.

**CM1** Shallow canopy for J-Box.

**US1** 6-5/8" x 1-1/2" Unistrut Adapter

**TB8** 8" x 8" Portable table base for floor and table use

**MC** Light duty pipe clamp for small fixtures. For pipes up to 1 5/16" O.D.

**MN** Medium duty pipe clamp for small to large fixtures. For pipes up to 2" O.D.

**N2** Track adapter with integral driver for SpecTrac 2-Circuit data track, 120V.

**N7** Track adapter with integral driver for SpecTrac 2-Circuit data track, 277V.

### ACCESSORIES

<b>SP1</b>	Stock Pattern Steel
<b>CP1</b>	Custom Steel Pattern
<b>PH2</b>	Pattern Holder
<b>CC18</b>	Coiled Cord
<b>4MCF</b>	Mini Color Frame
<b>4MTH</b>	Mini Top Hat
<b>4MDN</b>	Mini Donut

### NOTES ON DIMMING

Visit [tslight.com/resources](https://tslight.com/resources) or scan the QR Code.



### EXTENSION WANDS

<b>SP 12</b>	12" Stem
<b>SP 18</b>	18" Stem
<b>SP 24</b>	24" Stem
<b>SP X</b>	Custom Length

### PATTERNS

For standard and custom patterns, see the pattern specification sheet. QR Code is provided below.



# SPECIFY:

MODEL		FINISH	VOLTAGE	
LED21P		B = Black W = White	100 120 277	
OPTICS	MOUNTING	DIMMING †		ACCESSORIES
19 = 19° 26 = 26° 36 = 36° 50 = 50°	See Mounting Options for Ordering Codes	TE = Trailing Edge (120V Only) LE = Leading Edge (120V Only) DXB = DMX / RDM Basic ND = Non-Dimming 010 = 0-10V CS = Casambi Wireless		See Accessory Options for Ordering Codes

Maximum Ambient Temperature: 35°C

Maximum Operating Angle: 45° from vertical

† See "Notes on Dimming"

# ORDERING INFORMATION

PROJECT:	
LOCATION:	
QUANTITY:	
CONTACT:	
PHONE:	
EMAIL:	

EXAMPLE: LED21P-B-120-19-T1-SP1

MODEL	FINISH	VOLTAGE	OPTICS	MOUNTING	DIMMING	ACCESSORIES
LED21P						