

Manufactured in the USA - IBEW



TSC Model

Track Current Limiters



5 Holt Drive,
Stony Point, NY 10980
845-947-3034
info@tslight.com

Times Square Track Current Limiters are designed to provide an answer to energy limitations on wattage-per-foot requirements for lighting track installations. Some newer energy codes set a rating of 30 to 70 watts per linear foot of track irrespective of the actual wattage that is meant to be used on the track, unless a current limiting device is permanently installed between the track and the line feeding it. Times Square current limiters are available in over 12 different current ratings.

Available in black, white and silver finishes. Custom colors are available by request and at an additional charge.

Features

- Available with ratings from 1-10, 12 and 15 Amps (others available as special order), 120 & 277 Volts
- Available for use with commercial or specification grade track
- Linear limiters will fit into recessed track sleeves where track sleeves are available.

Ordering Matrix

MODEL	TRACK TYPE		FEED STYLE
TSC	L Comm Grade 1 Ckt 120V		E End Feed
	G Spec Grade 1 Ckt 120V G-Series		F Feed Thru
	T Spec Grade 2 Ckt 120V G-Series		R Linear
	A Spec Grade 2 Ckt 277V G-Series **		N 90° Feed Thru
	X Spec Grade 3 Ckt 120V G-Series †		
	P Spec Grade Curved Track, 3 Ckt 120V w/ Control Bus		
	Z Spec Grade 2 Ckt 120V w/ Control Bus SpecTrac		
	Y Spec Grade 2 Ckt 277V w/ Control Bus SpecTrac		
	Q Spec Grade 3 Ckt 120V w/ Control Bus SpecTrac		
	M Spec Grade 2 Ckt 120V w/ Control Bus SpecTrac Recessed Flanged ††		
V Spec Grade 2 Ckt 277V w/ Control Bus SpecTrac Recessed Flanged ††			
COLOR	1ST CKT BREAKER	2ND CKT BREAKER (IF REQUIRED)	3RD CKT BREAKER (IF REQUIRED)
B Black	1 1 Amp	1 1 Amp	1 1 Amp
W White	2 2 Amp	2 2 Amp	2 2 Amp
S Silver	3 3 Amp	3 3 Amp	3 3 Amp
C Custom	etc.*	etc.*	etc.*

* Also available as standard: 4-10, 12 and 15. Other ratings available as special order - consult factory.

** Not available in Linear configuration.

† Not available in 90° Feed Thru configuration.

†† Linear only with integral flange.

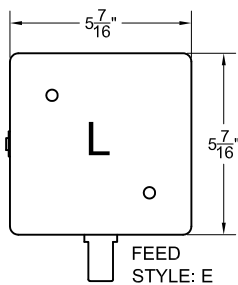
Desired Wattage	Ckt Rating (Amps)	Desired Wattage	Ckt Rating (Amps)	Desired Wattage	Ckt Rating (Amps)
120	1	600	5	1080	9
240	2	720	6	1200	10
360	3	840	7	1440	12
480	4	960	8	1800	15

Example: TSC-Z-E-B-1-1

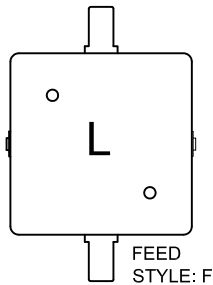
TSC- - - - -

* Specification sheets are subject to change without notice.

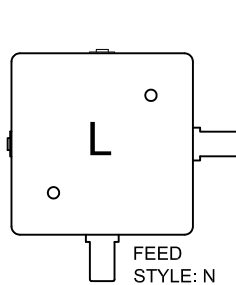
Commercial Grade
Surface/Pendant/Outlet-Box
Mount Current Limiter with
Live End Connector, 120V,
1 Ckt Breaker.



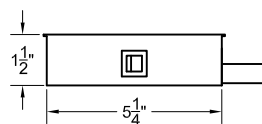
Commercial Grade
Surface/Pendant/Outlet-Box
Mount Current Limiter with Feed
Thru Live End Connectors,
120V, 1 or 2 Ckt Breakers



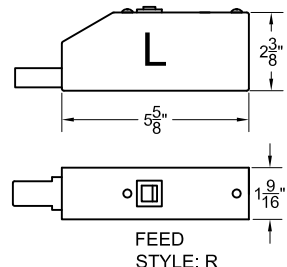
Commercial Grade
Surface/Pendant/Outlet-Box
Mount Current Limiter
with 90° Feed Thru Live
End Connectors, 120V,
1 or 2 Ckt Breakers



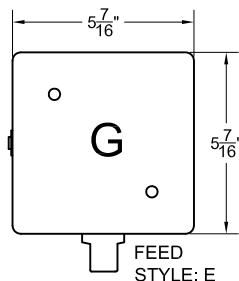
Side View of
Commercial Grade
Surface/Pendant/Outlet-Box
Mount Current Limiter



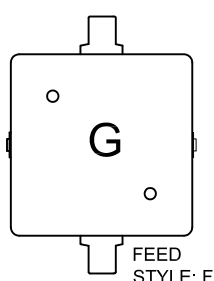
Commercial Grade
Surface/Pendant/Cable
Mount Linear Current Limiter
with Live End Connector,
120V, 1 Ckt Breaker



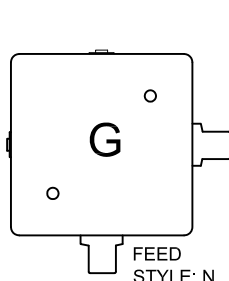
GES ECO Specification Grade
Surface/Pendant/Outlet-Box
Mount Current Limiter with
Live End Connector, 120V,
1 Ckt Breaker



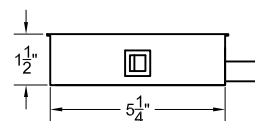
GES ECO Specification Grade
Surface/Pendant/Outlet-Box
Mount Current Limiter with
Feed Thru Live End
Connectors, 120V,
1 or 2 Ckt Breakers



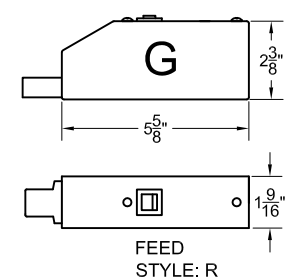
GES ECO Specification Grade
Surface/Pendant/Outlet-Box
Mount Current Limiter with 90°
Feed Thru Live End
Connectors, 120V,
1 or 2 Ckt Breakers



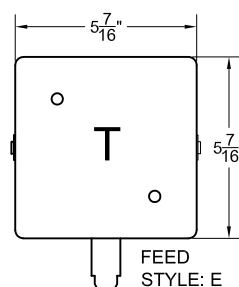
Side View of GES ECO
Specification Grade
Surface/Pendant/Outlet-Box
Mount Current Limiter



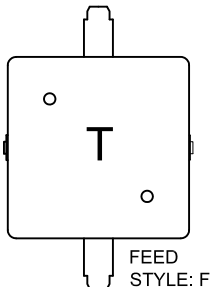
GES ECO Specification
Grade Surface/Pendant/Cable
Mount Linear Current Limiter
with Live End Connector,
120V, 1 Ckt Breaker



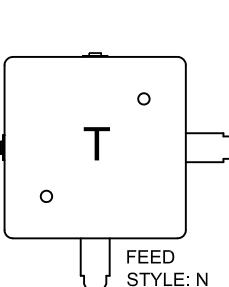
G Series Specification Grade
Surface/Pendant/Outlet-Box
Mount Current Limiter with Live
End Connector, 120V,
1 or 2 Ckt Breakers



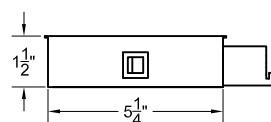
G Series Specification Grade
Surface/Pendant/Outlet-Box
Mount Current Limiter with
Feed Thru Live End
Connectors, 120V,
1 or 2 Ckt Breakers



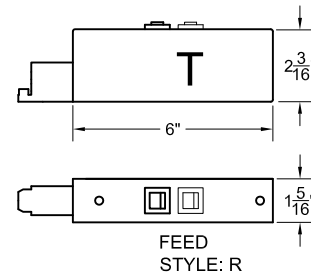
G Series Specification Grade
Surface/Pendant/Outlet-Box
Mount Current Limiter with
90° Feed Thru Live End
Connectors, 120V,
1 or 2 Ckt Breakers



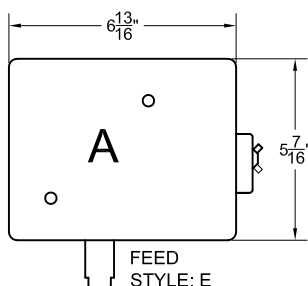
Side View of G Series
120V Specification Grade
Surface/Pendant/Outlet-Box
Mount Current Limiter



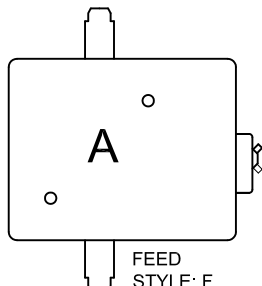
G Series Specification Grade
Surface/Pendant/Cable/Track-Sleeve
Mount Linear Current Limiter with
Live End Connector, 120V, 1 Ckt
Breaker. Also contains Track Sleeve
mounting screw if needed.



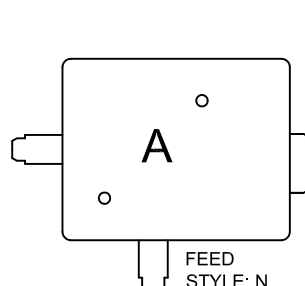
G Series Specification Grade
Surface/Pendant/Outlet-Box Mount
Current Limiter with Live End
Connector, 277V,
1 or 2 Ckt Breakers



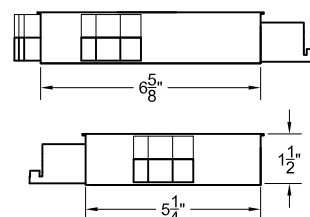
G Series Specification Grade
Surface/Pendant/Outlet-Box
Mount Current Limiter with Feed
Thru Live End Connectors, 120V,
1 or 2 Ckt Breakers



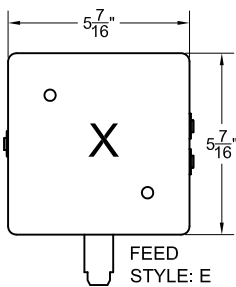
G Series Specification Grade
Surface/Pendant/Outlet-Box
Mount Current Limiter with 90°
Feed Thru Live End
Connectors, 120V,
1 or 2 Ckt Breakers



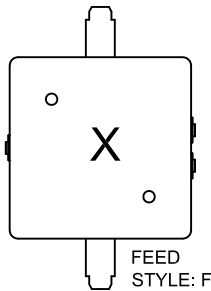
Side Views of G Series 277V
Specification Grade
Surface/Pendant/Outlet Box
Mount Current Limiter



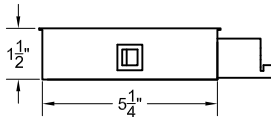
3 Ckt G Series Specification Grade
Surface/Pendant/Outlet-Box Mount
Current Limiter with Live End
Connector, 120V, 3 Ckt Breakers



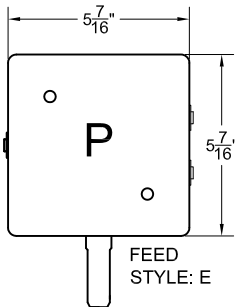
3 Ckt G Series Specification Grade
Surface/Pendant/Outlet-Box Mount
Current Limiter with Feed Thru Live
End Connectors, 120V,
3 Ckt Breakers



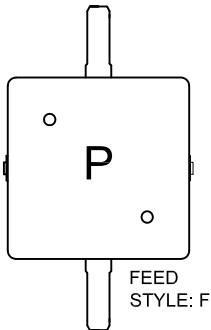
Side View of 3 Ckt G Series
120V Specification Grade
Surface/Pendant/Outlet-Box
Mount Current Limiter



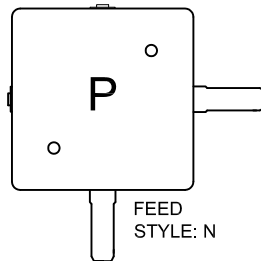
Specification Grade Curved Track
Surface/Pendant/Outlet-Box
Mount Current Limiter with Live
End Connector, 120V, 1 to 3 Ckt
Breakers. Also contains
Control Bus Hookup if needed.



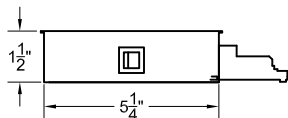
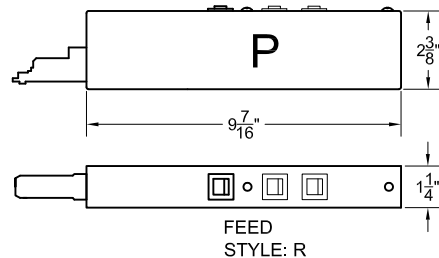
Specification Grade Curved Track
Surface/Pendant/Outlet-Box Mount Current
Limiter with Feed Thru Live End Connectors,
120V, 1 or 2 Ckt Breakers. Also contains
Control Bus Hookup if needed.



Specification Grade Curved Track
Surface/Pendant/Outlet-Box
Mount Current Limiter with 90°
Feed Thru Live End Connectors,
120V, 1 or 2 Ckt Breakers.
Also contains Control Bus
Hookup if needed.

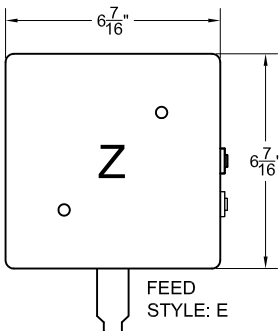


Specification Grade Curved Track
Surface/Pendant/Cable Mount Current
Limiter with Live End Connector, 120V, 1 to
3 Ckt Breakers. Also contains Control Bus
and Track Sleeve mounting screw if needed.

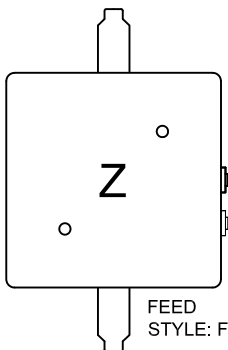


Side View of Specification
Grade Curved Track
Surface/Pendant/Outlet
Box Mount Current Limiter

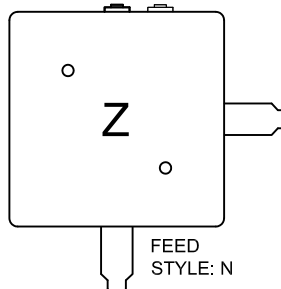
Specification Grade SpecTrac
Surface/Pendant/Outlet Box
Mount Current Limiter with Live
End Connector, 120V, 1 or 2
Ckt Breakers. Also contains
Control Bus Hookup if needed.



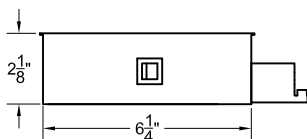
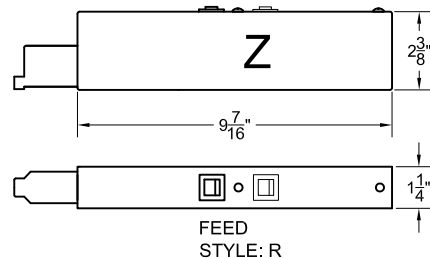
Specification Grade SpecTrac
Surface/Pendant/Outlet Box Mount Current
Limiter with Feed Thru Live End Connectors,
120V, 1 or 2 Ckt Breakers. Also contains
Control Bus Hookup if needed.



Specification Grade SpecTrac
Surface/Pendant/Outlet Box Mount
Current Limiter with 90° Feed Thru
Live End Connectors, 120V, 1 or 2
Ckt Breakers. Also contains Control
Bus Hookup if needed.

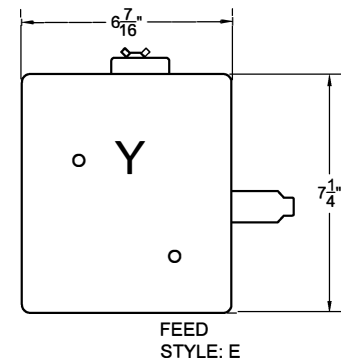


Specification Grade SpecTrac
Surface/Pendant/Cable/Track-Sleeve
Mount Current Limiter with Live End
Connector, 120V, 1 or 2 Ckt Breakers.
Also contains Control Bus and Track
Sleeve mounting screw if needed.

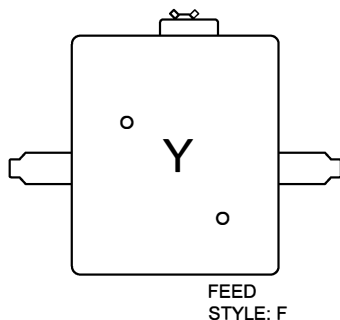


Side View of Specification
Grade SpecTrac 120V
Surface/Pendant/Outlet-Box
Mount Current Limiter

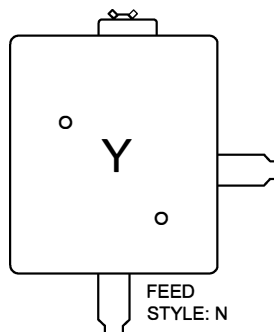
Specification Grade SpecTrac
Surface/Pendant/Outlet-Box
Mount Current Limiter with Live
End Connector, 277V, 1 or 2
Ckt Breakers. Also contains
Control Bus Hookup if needed.



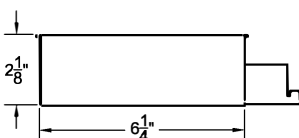
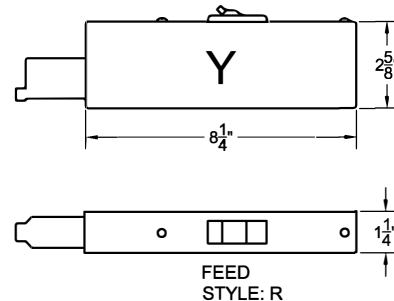
Specification Grade SpecTrac
Surface/Pendant/Outlet-Box Mount
Current Limiter with Feed Thru Live
End Connectors, 277V, 1 or 2 Ckt
Breakers. Also contains Control Bus
Hookup if needed.



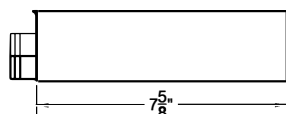
Specification Grade SpecTrac
Surface/Pendant/Outlet-Box
Mount Current Limiter with 90°
Feed Thru Live End
Connectors, 277V, 1 or 2 Ckt
Breakers. Also contains Control
Bus Hookup if needed.



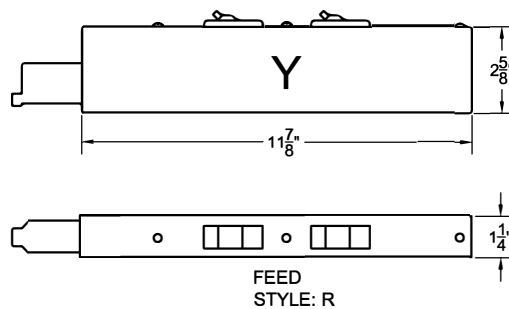
Specification Grade SpecTrac
Surface/Pendant/Cable/Track-Sleeve Mount
Current Limiter with Live End Connector, 277V,
1 Ckt Breaker. Also contains Control Bus and
Track Sleeve mounting screw if needed.



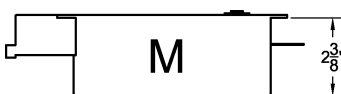
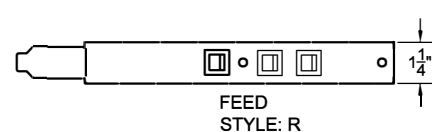
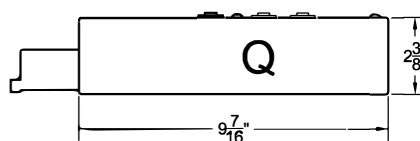
Side Views of
Specification Grade
SpecTrac 277V
Surface/Pendant/Outlet-Box
Mount Current Limiter



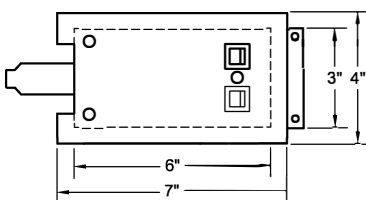
Specification Grade SpecTrac
Surface/Pendant/Cable/Track-Sleeve Mount
Current Limiter with Live End Connector, 277V, 2
Ckt Breakers. Also contains Control Bus and Track
Sleeve mounting screw if needed.



Specification Grade SpecTrac 3 Ckt
Surface/Pendant/Cable/Track-Sleeve Mount
Current Limiter with Live End Connector,
120V, 1 to 3 Ckt Breakers. Also contains
Control Bus and Track Sleeve mounting
screw if needed.

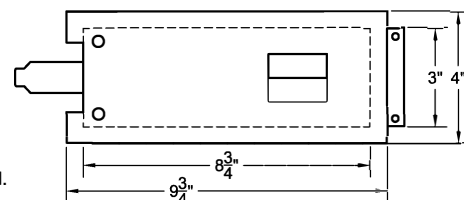


Specification Grade Recessed
Flanged SpecTrac Current Limiter
with Live End Connector and
Flange, 120V, 1 or 2 Ckt Breakers.
Also contains Control Bus if needed.



FEED
STYLE: R

Specification Grade Recessed
Flanged SpecTrac Current Limiter
with Live End Connector and
Flange, 277V, 1 or 2 Ckt Breakers.
Also contains Control Bus if needed.



FEED
STYLE: R

Notes on Factory Wiring Schemes (all Factory Wiring Schemes are field changeable):

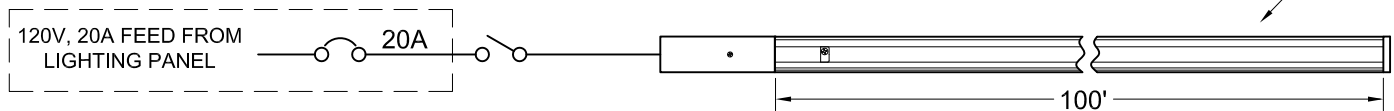
1. 2 circuit units with one circuit breaker will be factory wired with both circuits on the single breaker.
2. 3 circuit units with one circuit breaker will be factory wired with all circuits on the single breaker.
3. 3 circuit units with two circuit breakers will be factory wired with circuit #1 on the first breaker, circuit #2 on the second breaker, and circuit #3 will be unwired.
4. 2 and 3 circuit units with two circuit breakers of different value will be factory wired with the larger value breaker on circuit #1.
5. 3 circuit units with three circuit breakers of different value will be factory wired with the larger value breaker on circuit #1, and with the middle value breaker on circuit #2.
6. 3 circuit units with two circuit breakers of a same higher value and one of a lower value will be factory wired with the lower value breaker on circuit #3.
7. 3 circuit units with two circuit breakers of a same lower value and one of a higher value will be factory wired with the higher value breaker on circuit #1.

ABOUT CURRENT LIMITERS

Current Limiters are designed to provide an answer to energy limitations on wattage per foot requirements for track lighting installations. Some newer energy codes set a rating of up to 45 watts per linear foot of track irrespective of the actual wattage that is meant to be used on the track, unless a current limiting device is permanently installed between the track and the branch circuit feeding it. The diagrams below illustrate the difference in wattage calculations based on a hypothetical 100' layout with and without a Current Limiter installed. Note: Neutral conductors not shown for clarity.

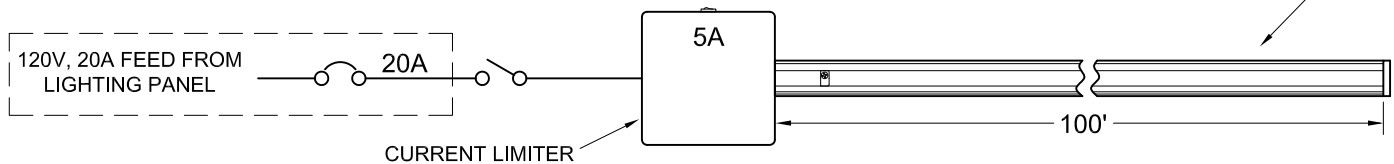
TRACK LIGHTING WATTAGE WITHOUT CURRENT LIMITER: Track Length Determines Wattage Calculation

100 ft of Track Lighting @
45 watts/ft = 4500W

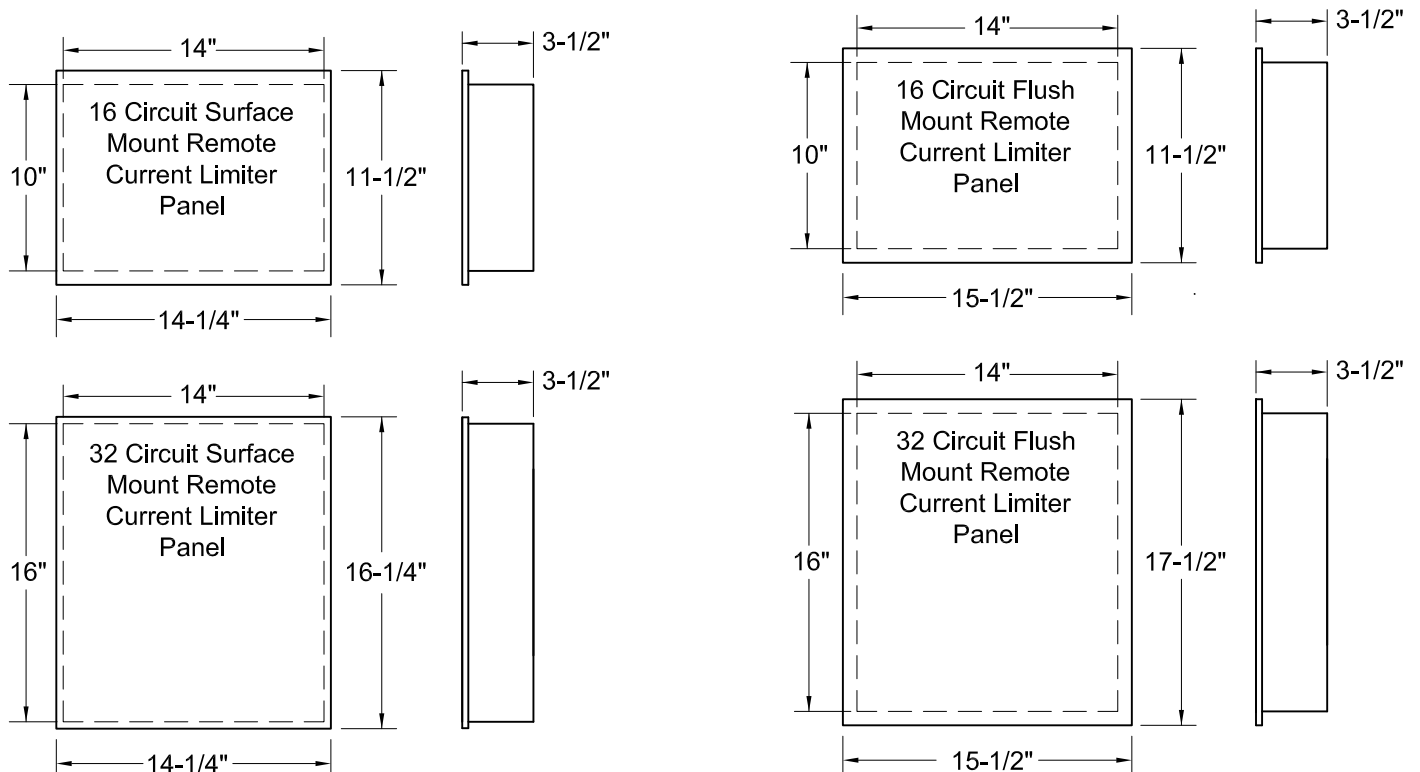


TRACK LIGHTING WATTAGE WITH CURRENT LIMITER: Current Limiter Rating Determines Wattage Calculation

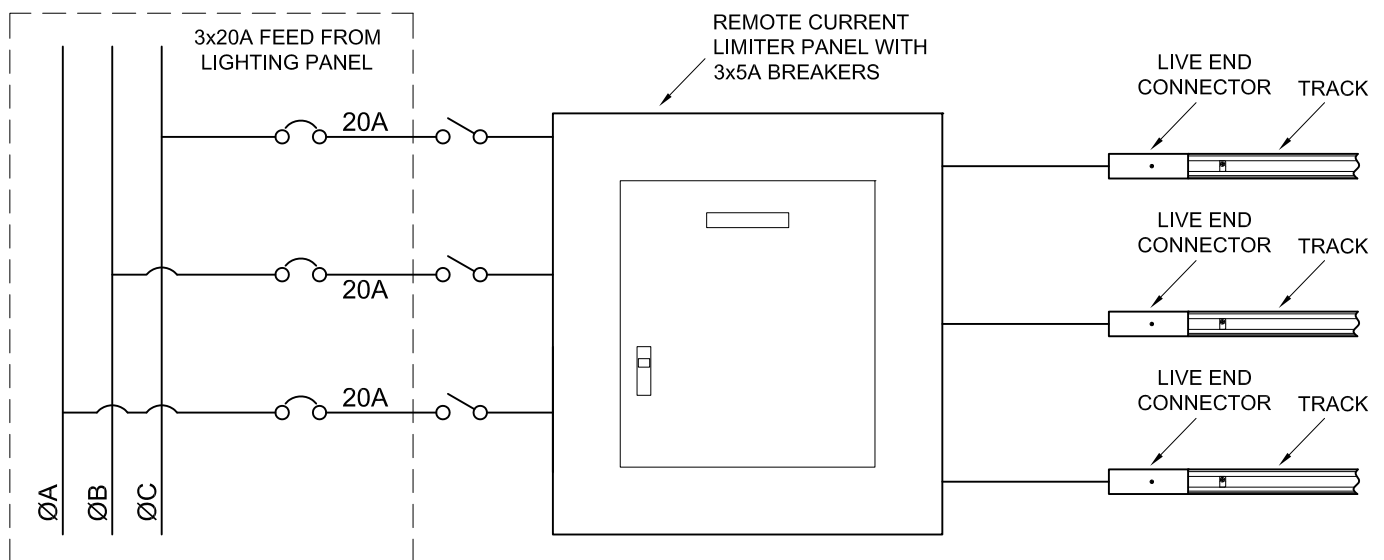
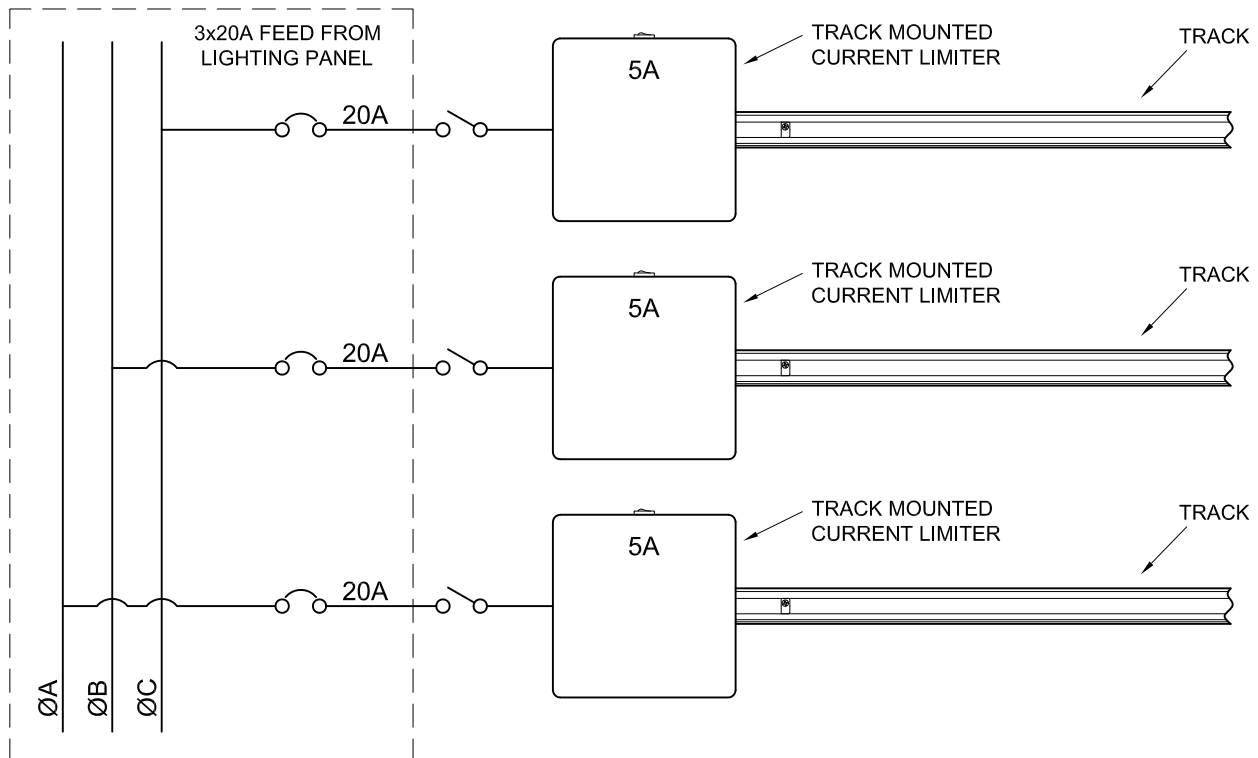
5 Amp @ 120V = 600W
(for any length of track)



Current Limiters are available in two types: Track and Remote. Track mounted Current Limiters attach to the track the same way Connectors do. Remote Current Limiters are in the form of circuit breaker panels. Each circuit breaker within a panel has its own input and output - there is no common bus on the line side, keeping all circuits discrete. These panels come in two sizes and two mounting styles: Surface and Flush Mount. NOTE: Current Limiter Panels should be installed after the lighting branch circuit panel(s) and before any other lighting control equipment. Current Limiter Panels are generally mounted in close proximity to the lighting branch circuit panel(s). NOTE: All Current Limiter Panels have a plurality of concentric knock-outs on top and bottom surfaces.



The diagrams below illustrate an example of both Current Limiter types. Each example has 3 track layouts connected to individual 5 Amp current limiters all fed from individual 20A branch circuits. In all cases, the Neutral conductors (not shown for clarity) pass through the Current Limiters. Both types serve the same function, but each has its own particular advantages. The factory can offer some guidance as to which type might be more suited to a particular layout.



The diagrams below illustrate just seven out of *many* ways that a hypothetical 4.8 watts per linear foot can be achieved on a sample layout of two individual track runs of 50' and 75'. In all cases, the Neutral conductors (not shown for clarity) pass through the Current Limiters. Switches, dimmers, and the like are not shown for clarity, but they can be interposed anywhere in the line feeding the track itself. With the exception of Linear Current Limiters, all other types can be rewired in the field to allow for switches, dimmers, and the like to be added as well as having circuits spliced within the Current Limiter housings. **CAUTION:** The integral circuit breakers within the housing are never to be tampered with, replaced with a higher value or bypassed.

