

Manufactured in the USA - IBEW

PRODUCT LISTED  
BY A NATIONALLY  
RECOGNIZED  
TESTING  
LABORATORY

# Connector Strips



5 Holt Drive  
Stony Point, NY 10980  
845-947-3034  
www.tslight.com

Times Square Lighting Connector Strips are custom built to specification and are used to distribute permanent lighting circuits throughout an installation. Exterior dimensions are 1 3/4" x 4" at a length of 2' minimum.

Connectors can be flush or pigtailed and come in a variety of styles. Can be mounted vertically or horizontally, dead hung or from moveable rigging systems. Ideal for theatres, television studios or any application requiring connections for portable lighting fixtures.

## Features

- Custom lengths and circuitry
- Variety of connector styles
- Connectors can be flush or pigtailed
- High visibility circuit numbering
- 18-gauge steel construction
- Mounting brackets included
- Shipped in 8' lengths maximum, wired through and folded
- DMX, gateway and network ports.
- Pigtails 18" standard. Other lengths available at additional cost.

## Connectors



**Three Pin Stage Connector**  
1 (Flush)  
5 (Pigtail)



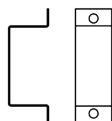
**Edison Connector**  
4 (Flush Duplex)  
7 (Pigtail)



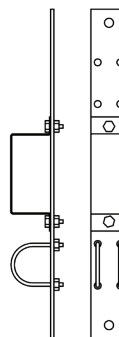
**Twist Lock Connector**  
2 (Flush 20A)  
6 (Pigtail 20A)  
8 (Flush 15A)

## Mounting

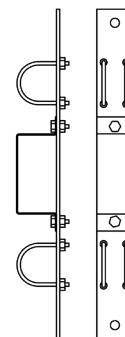
\* Mounting strap holds up to 2" O.D. pipe. Number of sets required is determined by length of connector strip. A 5' strip or less will get 2 mounting strap & bracket assemblies. An additional set will be provided for every additional 5' of connector strip ordered. Pipe supplied by others.



**Wall / Ceiling Bracket**  
CS-5004



**\* Single Pipe**  
CSSP (Cable Mount)  
CSSPT (Threaded Rod Mount)



**\* Single Pipe**  
CSSP (Cable Mount)  
CSSPT (Threaded Rod Mount)

## Ordering Matrix

Model	Length (ft)	# of Connectors	# of Circuits	Connector	Data (Optional)
CS				See Connectors	<b>DX3</b> 3-pin DMX <b>DX5</b> 5-pin DMX <b>ETH</b> Ethernet <b>GATE</b> Gateway <b>DXW</b> Wireless DMX Transceiver
Mounting				Feed	
See Mounting				<b>L</b> Stage Left <b>C</b> Center <b>R</b> Stage Right	

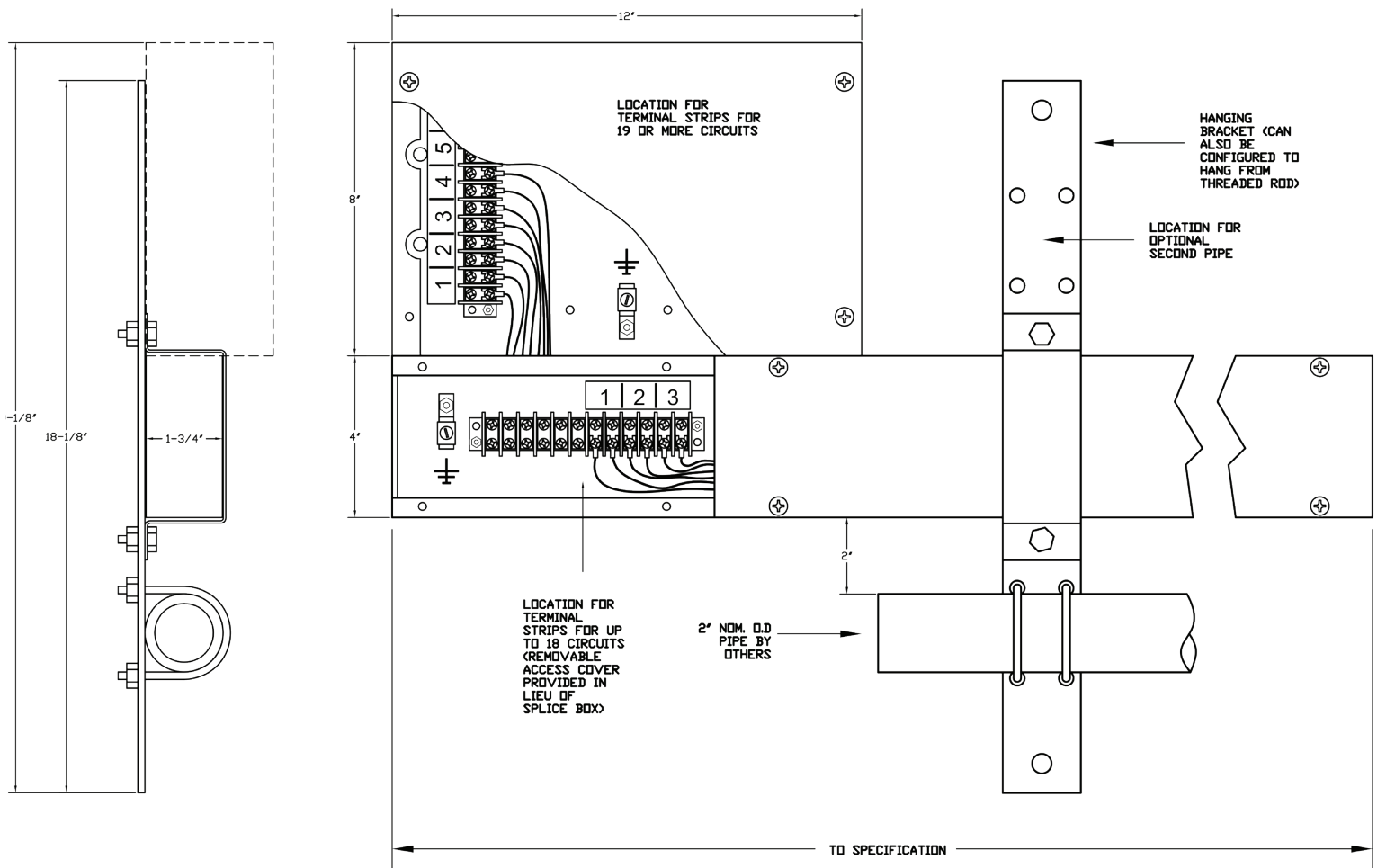
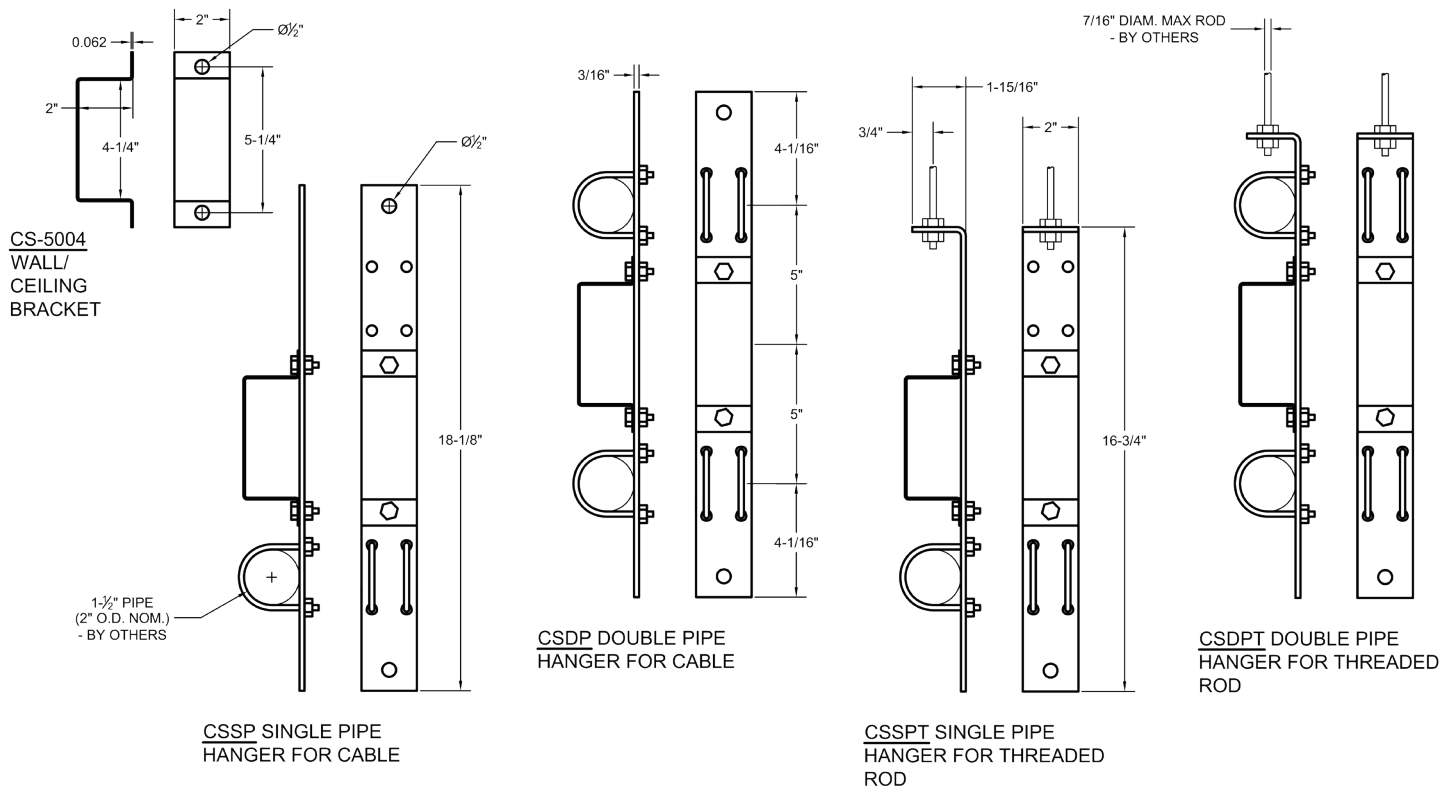
**Example:** CS-24-20-4-6-CSSP-R

CS-\_\_\_\_\_

\* Specification sheets are subject to change without notice.

\* The data output is a single connector (or gateway port) in its own housing located at the feed end of the connector strip.

## CONNECTOR STRIP HANGERS AND BRACKETS SPEC DIMENSIONS



# 5/16-18 U-BOLT

