

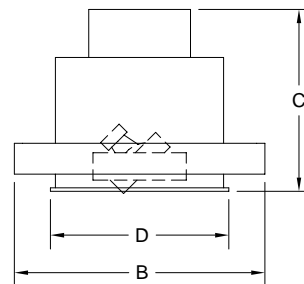
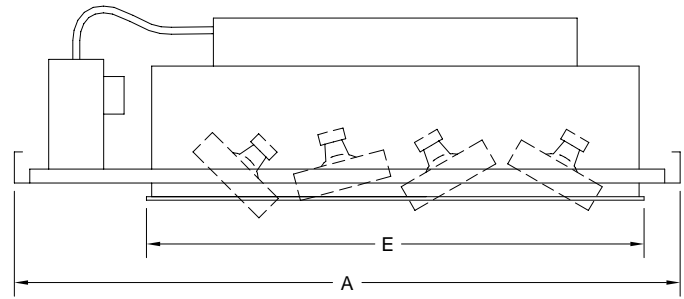
recessed multiples
a modern alternative to track lighting

www.tslight.com

RECESSED MULTIPLES **New Construction • Low Voltage •**



- MR16 unit accepts 20 to 71-watt lamps
- AR111 unit accepts 35 to 75-watt lamps
- Available in 1 to 5-light - linear, square and corner configurations
- Blends into the ceiling and can be installed with or without trim
- Each lamp is individually adjustable and specially designed lamp holders allow +/- 45° pan/tilt and full 360° rotation
- Lamp holders accept a variety of lenses and accessories
- Easy front re-lamping
- Thermal protector
- Adjustable trim with torsion springs for ceilings up to 2" thick
- Adjustable butterfly mounting brackets included
- Fully enclosed wiring compartment
- Black, white and silver trims available - custom colors upon request
- 120 or 277-volt versions available



MR16R 20-71W MR16

Model #	Length	Width	Height	Ceiling Cut-Out	
	(A)	(B)	(C)	(D)	(E)
MR16R-1	12 1/2"	6 7/8"	6 1/2"	5 1/4"	6 1/4"
MR16R-2	16 1/2"	6 7/8"	6 1/2"	5 1/4"	10 1/4"
MR16R-3	20 3/8"	6 7/8"	6 1/2"	5 1/4"	14 1/8"
MR16R-4	24 3/8"	6 7/8"	6 1/2"	5 1/4"	18 1/8"
MR16R-4S	14"	10 7/8"	8"	8 3/8"	8 3/8"
MR16R-3L	14 1/2"	11 1/2"	7"	4 3/8" x 9 1/8"	9 1/8" x 4 3/8"
MR16R-5L	18 3/8"	14 7/8"	7"	4 1/4" x 13"	13" x 4 1/4"

AR111R 35-75W AR111

Model #	Length	Width	Height	Ceiling Cut-Out	
	(A)	(B)	(C)	(D)	(E)
AR111R-1	14 3/8"	8 3/4"	7 3/4"	7 1/16"	8"
AR111R-2	20 1/4"	8 3/4"	7 3/4"	7 1/16"	13 7/8"
AR111R-3	26 1/8"	8 3/4"	7 3/4"	7 1/16"	19 7/8"
AR111R-4	32 1/8"	8 3/4"	7 3/4"	7 1/16"	25 3/4"
AR111R-4S	18"	14 1/4"	6 1/8"	13 3/4"	13 3/4"
AR111R-3L	19 1/8"	16"	6 1/8"	6 3/8" x 13 3/4"	13 3/4" x 6 3/8"

1-Linear

MR16R-1
AR111R-1



2-Linear

MR16R-2
AR111R-2



3-Linear

MR16R-3
AR111R-3



4-Linear

MR16R-4
AR111R-4



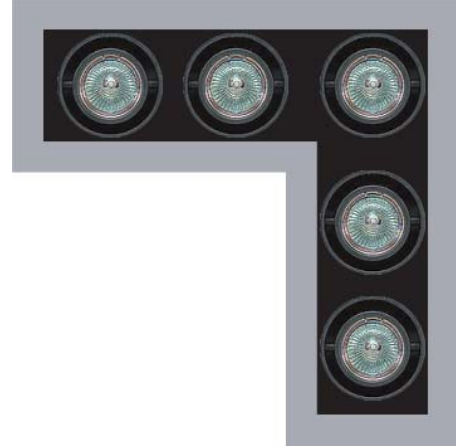
4-Square

MR16R-4S
AR111R-4S



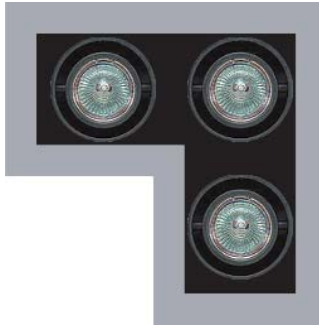
5-Corner L

MR16R-5L



3-Corner L

MR16R-3L
AR111R-3L



Specify:	Model	# of Lamps	Voltage	Trim Finish
	<input type="text"/>	<input type="text"/>	<input type="text"/>	<input type="text"/>
	MR16R	1 1-Linear	120 120V	B Black
	AR111R	2 2-Linear	277 277V	W White
		3 3-Linear		S Silver
		4 4-Linear		CC Custom
		4S 4-Square		
		3L 3-Corner		
		*5L 5-Corner		

*5L available on MR16R model only.

• Accessories •

Colored Glass

Beam Softener

5°x50° Linear

50°x50° Spread

UV Blocking

Snoot

Cross Baffle

MR16

GF38

GF38-601

GF38-600

GF38-673

GF38-702

HD38

XH38

AR111

GF39

GF39-601

GF39-600

GF39-673

GF39-702

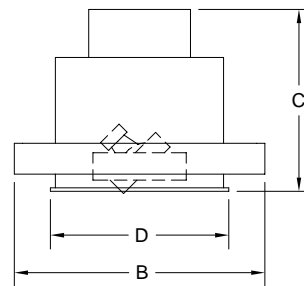
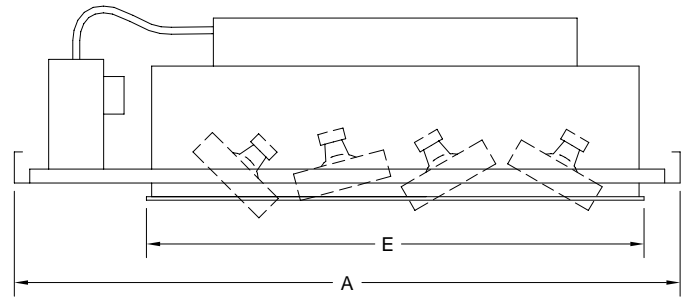
HD39

XH39

RECESSED MULTIPLES **New Construction • Line Voltage •**



- PAR30 unit accepts lamps up to 75-watts
- PAR38 unit accepts lamps up to 150-watts
- Available in 1 to 5-light - linear, square and corner configurations
- Blends into the ceiling and can be installed with or without trim
- Each lamp is individually adjustable and specially designed lamp holders allow +/- 45° pan/tilt and full 360° rotation
- Lamp holders accept a variety of lenses and accessories
- Easy front re-lamping
- Thermal protector
- Adjustable trim with torsion springs for ceilings up to 2" thick
- Adjustable butterfly mounting brackets included
- Fully enclosed wiring compartment
- Black, white and silver trims available - custom colors upon request
- 120-volt



30R 75W PAR30

Model #	Length	Width	Height	Ceiling Cut-Out	
	(A)	(B)	(C)	(D)	(E)
30R-1	14 3/8"	8 3/4"	9 1/4"	7 1/16"	8"
30R-2	20 1/4"	8 3/4"	9 1/4"	7 1/16"	13 7/8"
30R-3	26 1/8"	8 3/4"	9 1/4"	7 1/16"	19 7/8"
30R-4	32 1/8"	8 3/4"	9 1/4"	7 1/16"	25 3/4"
30R-4S	19 1/4"	16 1/2"	7 3/8"	12 7/8"	13 3/4"
30R-3L	19 1/8"	19 1/8"	7 7/8"	6 1/4" x 13 3/8"	13 3/8" x 6 1/4"
30R-5L	25 1/8"	25 1/8"	7 7/8"	6 1/4" x 19 3/8"	19 3/8" x 6 1/4"

38R 150W PAR38

Model #	Length	Width	Height	Ceiling Cut-Out	
	(A)	(B)	(C)	(D)	(E)
38R-1	14 3/8"	8 1/2"	9"	6 7/8"	8 7/8"
38R-2	21 3/8"	8 1/2"	9"	6 7/8"	15 3/4"
38R-3	28 1/4"	8 1/2"	9"	6 7/8"	22 5/8"
38R-4	35 1/8"	8 1/2"	9"	6 7/8"	29 1/2"
38R-4S	21 3/8"	21 3/8"	9"	15 3/4"	15 3/4"
38R-3L	19 1/8"	16 7/8"	9"	6 7/8" x 15 3/4"	15 3/4" x 6 7/8"
38R-5L	28 1/4"	28 1/4"	9"	6 7/8" x 22 5/8"	22 5/8" x 6 7/8"

1-Linear

30R-1
38R-1



2-Linear

30R-2
38R-2



3-Linear

30R-3
38R-3



4-Linear

30R-4
38R-4



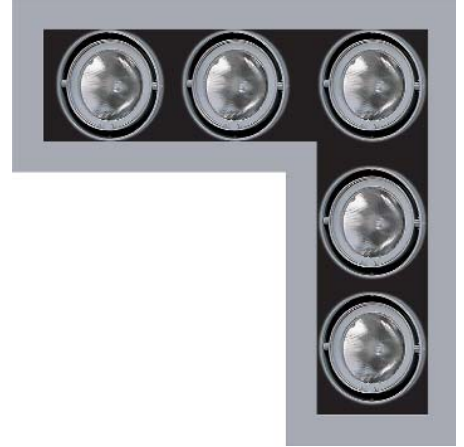
4-Square

30R-4S
38R-4S



5-Corner L

30R-5L
38R-5L



3-Corner L

30R-3L
38R-3L



Specify:	Model	# of Lamps	Voltage	Trim Finish
	<input type="text"/>	<input type="text"/>	<input type="text"/>	<input type="text"/>
	30R	1 1-Linear	120 120V	B Black
	38R	2 2-Linear		W White
		3 3-Linear		S Silver
		4 4-Linear		CC Custom
		4S 4-Square		
		3L 3-Corner		
		5L 5-Corner		

• Accessories •

Colored Glass

Beam Softener

5°x50° Linear

50°x50° Spread

UV Blocking

Snoot

Cross Baffle

PAR30

GF40

GF40-601

GF40-600

GF40-673

GF40-702

HD40

XH40

PAR38

GF41

GF41-601

GF41-600

GF41-673

GF41-702

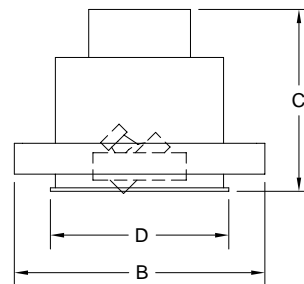
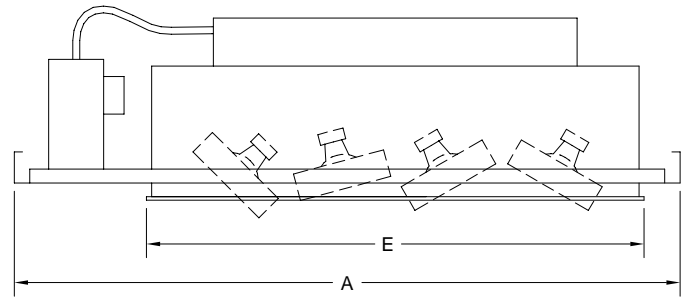
HD41

XH41

RECESSED MULTIPLES **New Construction • Metal Halide CMH16 •**



- Accepts 20-watt CMH Precise MR16 ceramic metal halide lamps
- Available in 1 to 5-light - linear, square and corner configurations
- Blends into the ceiling and can be installed with or without trim
- Each lamp is individually adjustable and specially designed lamp holders allow +/- 45° pan/tilt and full 360° rotation
- Lamp holders accept a variety of lenses and accessories
- Easy front re-lamping
- Thermal protector
- Adjustable trim with torsion springs for ceilings up to 2" thick
- Adjustable butterfly mounting brackets included
- Fully enclosed wiring compartment
- Black, white and silver trims available - custom colors upon request
- 120 or 277-volt versions available



CMH16R 20W Metal Halide CMH16

Model #	Length	Width	Height	Ceiling Cut-Out	
	(A)	(B)	(C)	(D)	(E)
CMH16R-1	12 1/2"	6 7/8"	8 3/4"	5 1/4"	6 1/4"
CMH16R-2	16 1/2"	6 7/8"	8 3/4"	5 1/4"	10 1/4"
CMH16R-3	20 3/8"	6 7/8"	8 3/4"	5 1/4"	14 1/8"
CMH16R-4	24 3/8"	6 7/8"	8 3/4"	5 1/4"	18 1/8"
CMH16R-4S	14"	10 7/8"	8"	8 3/8"	8 3/8"
CMH16R-3L	14 1/2"	11 1/2"	7"	4 3/8" x 9 1/8"	9 1/8" x 4 3/8"
CMH16R-5L	18 3/8"	14 7/8"	7"	4 1/4" x 13"	13" x 4 1/4"

1-Linear

CMH16R-1



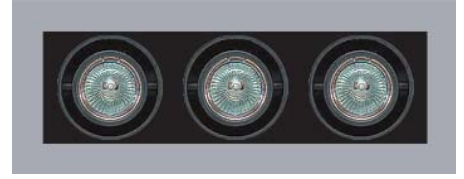
2-Linear

CMH16R-2



3-Linear

CMH16R-3



4-Linear

CMH16R-4



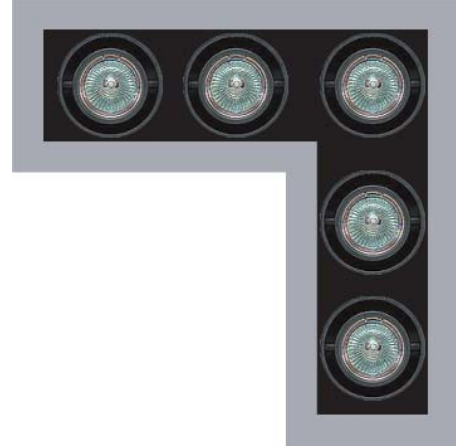
4-Square

CMH16R-4S



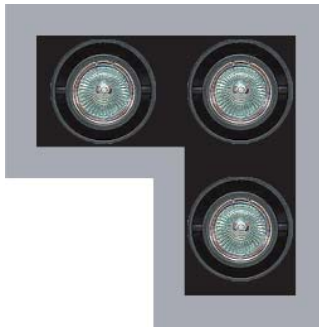
5-Corner L

CMH16R-5L



3-Corner L

CMH16R-3L



Specify:	Model	# of Lamps	Voltage	Trim Finish
	<input type="text"/>	<input type="text"/>	<input type="text"/>	<input type="text"/>
	CMH16R	1 1-Linear 2 2-Linear 3 3-Linear 4 4-Linear 4 S 4-Square 3 L 3-Corner 5 L 5-Corner	120 120V 277 277V	B Black W White S Silver CC Custom

• **Accessories** •

Colored Glass

Beam Softener

5°x50° Linear

50°x50° Spread

UV Blocking

Snoot

Cross Baffle

CMH16

GF38

GF38-601

GF38-600

GF38-673

GF38-702

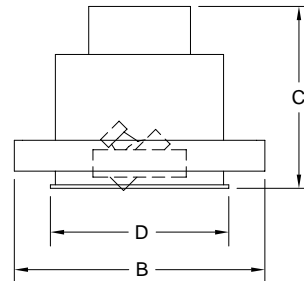
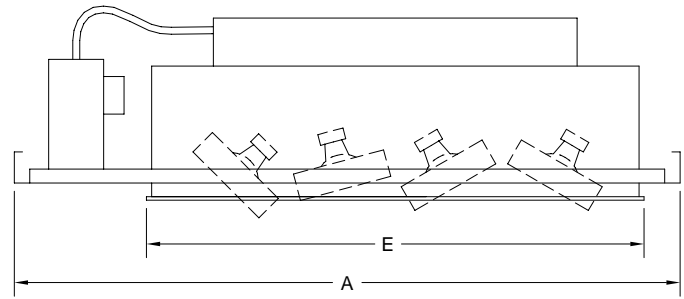
HD38

XH38

RECESSED MULTIPLES **New Construction • Metal Halide PAR •**



- Metal halide PAR20 unit accepts 20-watt ceramic metal halide lamps
- Metal halide PAR30 unit accepts 39-watt ceramic metal halide lamps
- Available in 1 to 4-light - linear, square and corner configurations
- Blends into the ceiling and can be installed with or without trim
- Each lamp is individually adjustable and specially designed lamp holders allow +/- 45° pan/tilt and full 360° rotation
- Lamp holders accept a variety of lenses and accessories
- Easy front re-lamping
- Thermal protector
- Adjustable trim with torsion springs for ceilings up to 2" thick
- Adjustable butterfly mounting brackets included
- Fully enclosed wiring compartment
- Black, white and silver trims available - custom colors upon request
- 120 or 277-volt versions available



CDM20R 20W Metal Halide PAR20

Model #	Length	Width	Height	Ceiling Cut-Out	
	(A)	(B)	(C)	(D)	(E)
CDM20R-1	11 1/8"	6 5/8"	8 3/4"	5"	7 1/8"
CDM20R-2	16 5/8"	6 5/8"	8 3/4"	5"	12 5/8"
CDM20R-3	21 5/8"	6 5/8"	8 3/4"	5"	18 1/8"
CDM20R-4	25 5/8"	6 5/8"	8 3/4"	5"	23 5/8"
CDM20R-4S	16 1/8"	13 7/8"	8 3/4"	10 1/4"	10 7/8"
CDM20R-3L	15 7/8"	13 7/8"	8 3/4"	4 7/8" x 11 1/2"	11 1/2" x 4 7/8"

CDM30R 39W Metal Halide PAR30

Model #	Length	Width	Height	Ceiling Cut-Out	
	(A)	(B)	(C)	(D)	(E)
CDM30R-1	14 3/8"	8 3/4"	10 3/4"	7 1/16"	8"
CDM30R-2	20 1/4"	8 3/4"	10 3/4"	7 1/16"	13 7/8"
CDM30R-3	26 1/8"	8 3/4"	10 3/4"	7 1/16"	19 7/8"
CDM30R-4	32 1/8"	8 3/4"	10 3/4"	7 1/16"	25 3/4"

1-Linear

CDM20R-1
CDM30R-1



2-Linear

CDM20R-2
CDM30R-2



3-Linear

CDM20R-3
CDM30R-3



4-Linear

CDM20R-4
CDM30R-4



4-Square

CDM20R-4S



3-Corner L

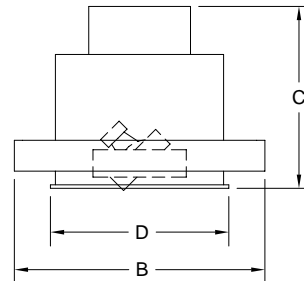
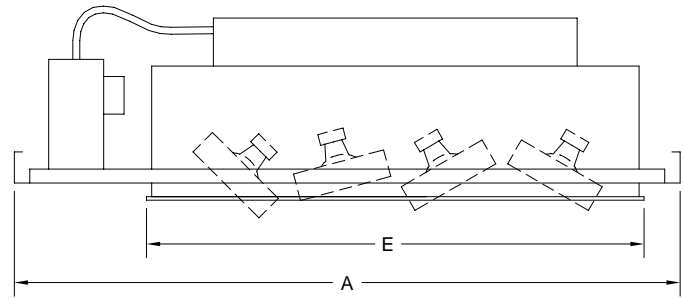
CDM20R-3L



				• Accessories •			
Specify:	Model	# of Lamps	Voltage	Trim Finish	PAR20	PAR30	
	<input type="text"/>	<input type="text"/>	<input type="text"/>	<input type="text"/>	Colored Glass	GF43	GF40
	CDM20R	1 1-Linear	120 120V	B Black	Beam Softener	GF43-601	GF40-601
	CDM30R	2 2-Linear	277 277V	W White	5°x50° Linear	GF43-600	GF40-600
		3 3-Linear		S Silver	50°x50° Spread	GF43-673	GF40-673
		4 4-Linear		CC Custom	UV Blocking	GF43-702	GF40-702
		*4S 4-Square			Snoot	HD43	HD40
		*3L 3-Corner			Cross Baffle	XH43	XH40

*4S and 3L available on CDM20R model only.

RECESSED MULTIPLES **New Construction • Metal Halide T6 •**



- CDMTR39 accepts 39-watt ceramic metal halide T6 lamps
- CDMTR70 accepts 70-watt ceramic metal halide T6 lamps
- Available in 1 to 4-light - linear configurations
- Blends into the ceiling and can be installed with or without trim
- Each lamp is individually adjustable and specially designed lamp holders allow +/- 45° pan/tilt and full 360° rotation
- Lamp holders accept a variety of lenses and accessories
- Easy front re-lamping
- Thermal protector
- Adjustable trim with torsion springs for ceilings up to 2" thick
- Adjustable butterfly mounting brackets included
- Fully enclosed wiring compartment
- Black, white and silver trims available - custom colors upon request
- 120 or 277-volt versions available

CDMTR39 39W Metal Halide T6

Model #	Length	Width	Height	Ceiling Cut-Out	
	(A)	(B)	(C)	(D)	(E)
CDMTR39-1	14 3/8"	8 3/4"	10 3/4"	7 1/16"	8"
CDMTR39-2	20 1/4"	8 3/4"	10 3/4"	7 1/16"	13 7/8"
CDMTR39-3	26 1/8"	8 3/4"	10 3/4"	7 1/16"	19 7/8"
CDMTR39-4	32 1/8"	8 3/4"	10 3/4"	7 1/16"	25 3/4"

CDMTR70 70W Metal Halide T6

Model #	Length	Width	Height	Ceiling Cut-Out	
	(A)	(B)	(C)	(D)	(E)
CDMTR70-1	14 3/8"	8 3/4"	10 3/4"	7 1/16"	8"
CDMTR70-2	20 1/4"	8 3/4"	10 3/4"	7 1/16"	13 7/8"
CDMTR70-3	26 1/8"	8 3/4"	10 3/4"	7 1/16"	19 7/8"
CDMTR70-4	32 1/8"	8 3/4"	10 3/4"	7 1/16"	25 3/4"

1-Linear

CDMTR39-1
CDMTR70-1



2-Linear

CDMTR39-2
CDMTR70-2



3-Linear

CDMTR39-3
CDMTR70-3



4-Linear

CDMTR39-4
CDMTR70-4



Specify:	Model	# of Lamps	Voltage	Trim Finish	• Accessories •	T6
	<input type="text"/>	<input type="text"/>	<input type="text"/>	<input type="text"/>	Colored Glass	GF42
	CDMTR39	1 1-Linear	120 120V	B Black	Beam Softener	GF42-601
	CDMTR70	2 2-Linear	277 277V	W White	5°x50° Linear	GF42-600
		3 3-Linear		S Silver	50°x50° Spread	GF42-673
		4 4-Linear		CC Custom	UV Blocking	GF42-702
					Snoot	HD42
					Cross Baffle	XH42



TIMES SQUARE
LIGHTING
Architectural & Stage Ltg. Systems

5 Kay Fries Drive
Stony Point, NY 10980
ph. 845-947-3034
fax 845-947-3047

info@tslight.com

www.tslight.com

recessedmultiples

a modern alternative to track lighting

© 2008 Times Square Lighting