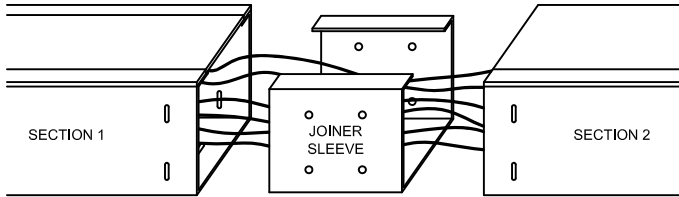
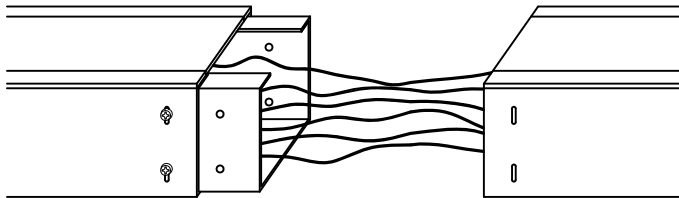


## JOINING CONNECTOR STRIP SECTIONS

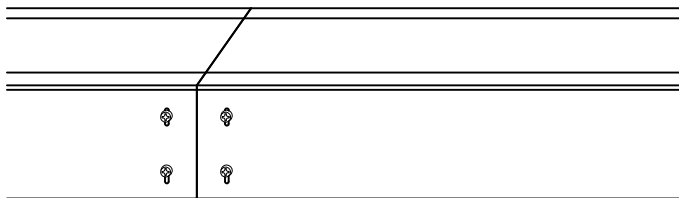
STEP 1: INSTALL JOINER SLEEVE TO SECTION 1 SUCH THAT JOINER SLEEVE NUTS LINE UP WITH SECTION 1 SLOTS.



STEP 2: ATTACH JOINER SLEEVE TO FIRST SECTION WITH 5 SCREWS PROVIDED. DO NOT TIGHTEN SCREWS UNTIL LAST STEP.



STEP 3: SECURE SECTION 2 TO JOINER SLEEVE WITH 5 REMAINING SCREWS. COMPLETELY TIGHTEN ALL 10 SCREWS.

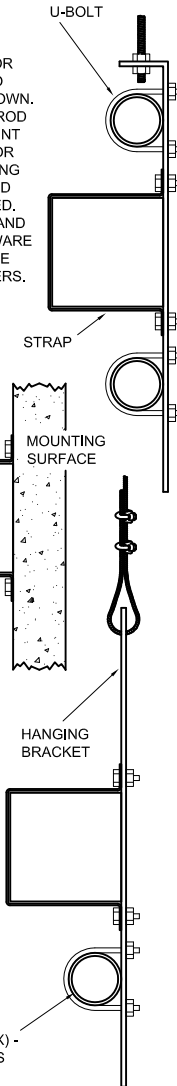


## HANGING/MOUNTING CONNECTOR STRIP

**THREADED ROD INSTALLATION:**  
INSTALL CONNECTOR STRIP HANGERS TO THREADED ROD AS SHOWN. MAXIMUM THREADED ROD DIAMETER: 7/16". MOUNT PIPE AND CONNECTOR STRIP AS SHOWN USING U-BOLTS, STRAP, AND HARDWARE PROVIDED. THREADED ROD SIZE AND NON-PROVIDED HARDWARE SELECTION SHALL BE DETERMINED BY OTHERS.

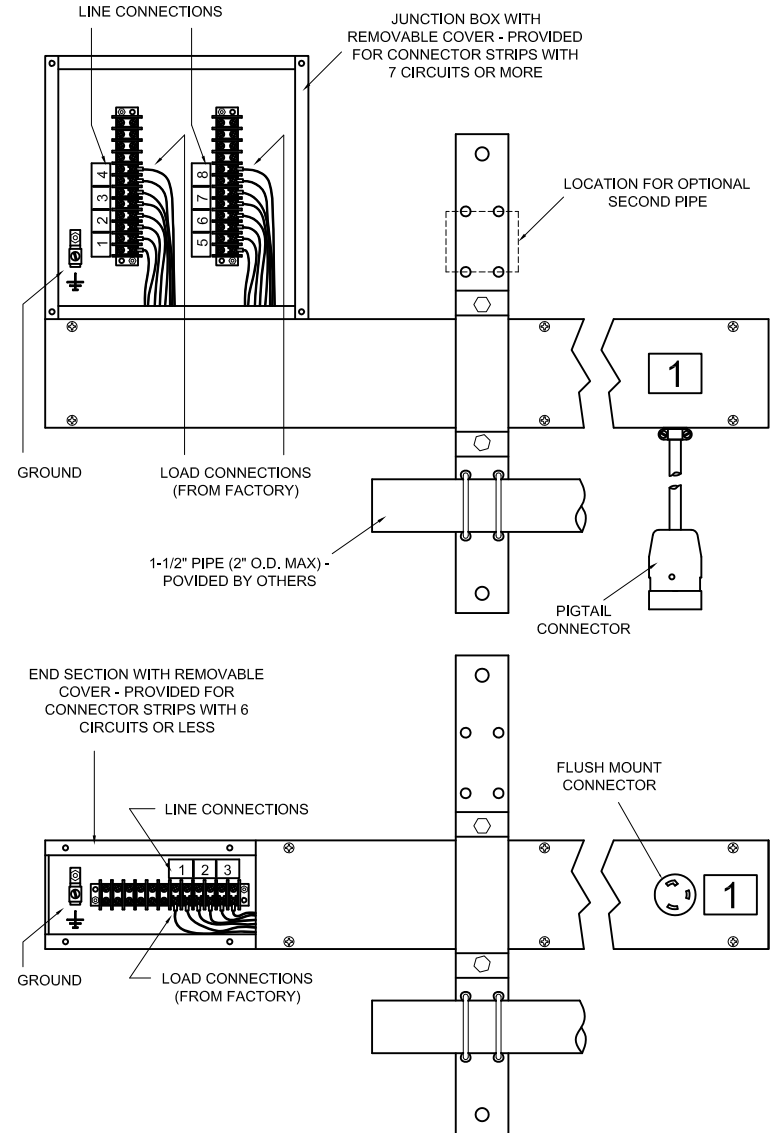
**SURFACE MOUNT INSTALLATION:**  
INSTALL CONNECTOR STRIP STRAP TO MOUNTING SURFACE AS SHOWN USING HARDWARE PROVIDED BY OTHERS. HARDWARE SELECTION AND MOUNTING METHOD EMPLOYED SHALL BE DETERMINED BY OTHERS.

**CABLE, WIRE ROPE, OR CHAIN INSTALLATION:**  
INSTALL CONNECTOR STRIP HANGERS TO CABLE, WIRE ROPE, OR CHAIN AS SHOWN WITH MATERIALS SUPPLIED BY OTHERS. MOUNT PIPE AND CONNECTOR STRIP AS SHOWN USING U-BOLTS, STRAP, AND HARDWARE PROVIDED. CABLE, WIRE ROPE, OR CHAIN SIZE AND NON-PROVIDED HARDWARE SELECTION SHALL BE DETERMINED BY OTHERS.



1-1/2" PIPE (2" O.D. MAX) - PROVIDED BY OTHERS

## MAKING ELECTRICAL CONNECTIONS



THIS DRAWING IS THE PROPERTY OF TIMES SQUARE LIGHTING, INC. ANY UNAUTHORIZED USE IS PROHIBITED. SPECIFICATIONS SUBJECT TO CHANGE WITHOUT NOTICE. COPYRIGHT © TIMES SQUARE LIGHTING, INC. 2010. ALL RIGHTS RESERVED.

REV	DATE	DESCRIPTION	BY
-	-	-	-
-	-	-	-
-	-	-	-
-	-	-	-
-	-	-	-



**TIMES SQUARE LIGHTING INC.**

5 HOLT DR., STONY POINT, NY 10980  
845-947-3034 FAX: 845-947-3047

DRAWING TITLE:	FILE: cs instr sheet
CONNECTOR STRIP CONSTRUCTION AND INSTALLATION INSTRUCTIONS	DWG BY: TPT APPR: -
PROJECT: -	DATE: 10-01-10
-	SCALE: none SHEET 1 OF 1
-	TSL P/N: REV: -