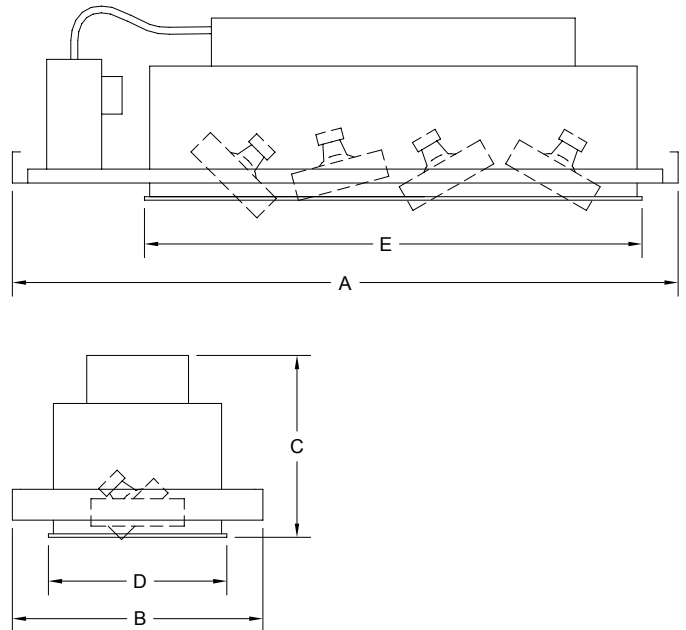


# RECESSED MULTIPLES New Construction • Metal Halide PAR30 •



- Accepts 39-watt PAR30 ceramic metal halide lamps
- Available in 1 to 4-light - linear, square and corner configurations
- Blends into the ceiling and can be installed with or without trim
- Each lamp is individually adjustable and specially designed lamp holders allow +/- 45° pan/tilt and full 360° rotation
- Lamp holders accept a variety of lenses and accessories
- Easy front re-lamping
- Thermal protector
- Adjustable trim with torsion springs for ceilings up to 2" thick
- Adjustable butterfly mounting brackets included
- Fully enclosed wiring compartment
- Black, white and silver trims available - custom colors upon request
- 120 or 277-volt versions available



## CDM30R 39W Metal Halide PAR30

| Model #  | Length  | Width  | Height  | Ceiling Cut-Out |         |
|----------|---------|--------|---------|-----------------|---------|
|          | (A)     | (B)    | (C)     | (D)             | (E)     |
| CDM30R-1 | 14 3/8" | 8 3/4" | 10 3/4" | 7 1/16"         | 8"      |
| CDM30R-2 | 20 1/4" | 8 3/4" | 10 3/4" | 7 1/16"         | 13 7/8" |
| CDM30R-3 | 26 1/8" | 8 3/4" | 10 3/4" | 7 1/16"         | 19 7/8" |
| CDM30R-4 | 32 1/8" | 8 3/4" | 10 3/4" | 7 1/16"         | 25 3/4" |
|          |         |        |         |                 |         |
|          |         |        |         |                 |         |

| Model         | # of Lamps        | Voltage         | Trim Finish      |
|---------------|-------------------|-----------------|------------------|
| Spec: CDM30R  |                   |                 |                  |
| <b>CDM30R</b> | <b>1</b> 1-Linear | <b>120</b> 120V | <b>B</b> Black   |
|               | <b>2</b> 2-Linear | <b>277</b> 277V | <b>W</b> White   |
|               | <b>3</b> 3-Linear |                 | <b>S</b> Silver  |
|               | <b>4</b> 4-Linear |                 | <b>CC</b> Custom |

Last updated 04/01/2008.

### 1-Linear

CDM30R-1



### 2-Linear

CDM30R-2



### 3-Linear

CDM30R-3



### 4-Linear

CDM30R-4



---

### Lamp Types

**CDM35/PAR30L/M/SP** 39W; 10000Hrs;  
10° Beam; 44000 CBCP; 2000 Lumens;  
81 CRI; 3000°K Color Temp

**CDM35/PAR30L/M/FL** 39W; 10000Hrs;  
30° Beam; 7400 CBCP; 2200 Lumens;  
81 CRI; 3000°K Color Temp

### Accessories

|          |                |
|----------|----------------|
| GF40     | Colored Glass  |
| GF40-601 | Beam Softener  |
| GF40-600 | 5°x50° Linear  |
| GF40-673 | 50°x50° Spread |
| GF40-702 | UV Blocking    |
| HD40     | Snoot          |
| XH40     | Cross Baffle   |