



# CHELSEA 17W

## PATTERN & FRAMING PROJECTOR



5 Holt Drive,  
Stony Point, NY 10980  
845-947-3034  
www.tslight.com

The Chelsea is a miniature 1800 lumen theatrical style gobo and framing projector. It delivers a crisp projection for short to medium applications. The Chelsea is available as a track mount or canopy fixture.

A wide selection of standard patterns (gobos) are available. Custom patterns are also available by simply sending us a PDF of your desired pattern via email.

Manufactured in the USA - IBEW



### Features

- 100-277 Volt available
- 50,000 hour lamp life
- Framing shutters included
- Stock or custom, steel or glass patterns
- Dimmable (optional)
- Numerous mounting options and accessories

### Construction

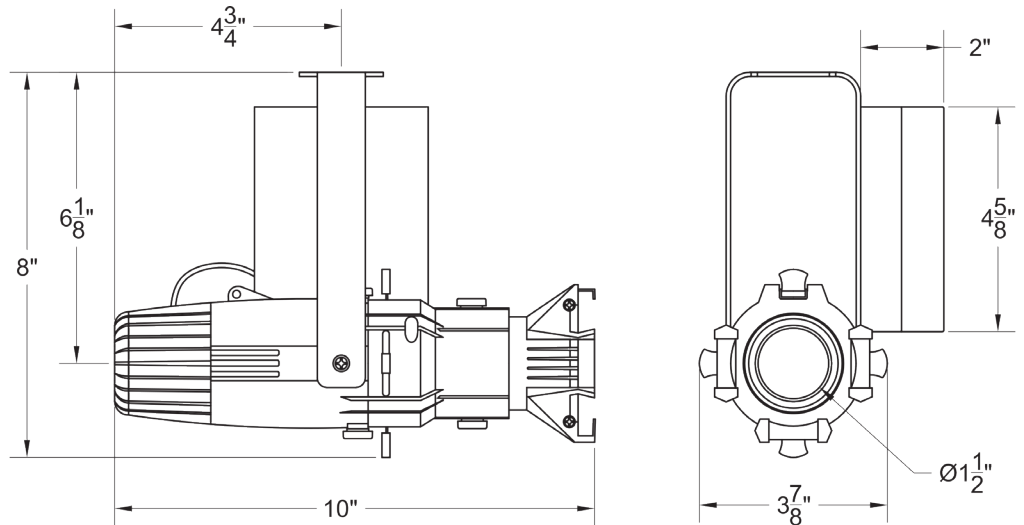
- Aluminium and steel pattern and framing projector with black, white or silver finish
- Accessory slot for color glass
- Adjustable lenses for sharp focus
- Internal framing shutters
- Accepts Z-size glass or metal gobo
- Accepts up to 2 accessories
- Weight: 3 lbs.

### Optics

- 19°, 26°, 36° and 50° Lens Tube available

### Electrical

- 21 watt power consumption
- Integral electronic driver
- Meets FCC 47 CFR Part 15/18 Requirements



### LED

- Color Temperature: 3200K
- CRI: 90
- No UV or IR

### Dimming

- Trailing edge (ELV): 120V
- Leading edge (Triac): 120V
- 0-10V: 120-277V with surface mounting. For track applications, use E-series 2-circuit with data bus

### Ordering Matrix

| Model  | Finish                 | Voltage    | Optics                                       | Mounting             | Dimming*   | Accessories           |
|--------|------------------------|------------|--|----------------------|--|-----------------------|
| LED2IP | B = Black<br>W = White | 120<br>277 | 19 = 19°<br>26 = 26°<br>36 = 36°<br>50 = 50° | See Mounting Options | TE = Trailing Edge (120V Only)<br>LE = Leading Edge (120V Only)<br>ND = Non-Dimming<br>010 = 0-10V | See Accessory Options |

Maximum ambient temperature: 35°C  
Maximum operating angle: 45° from vertical

\* See "Notes on Dimming" on reverse

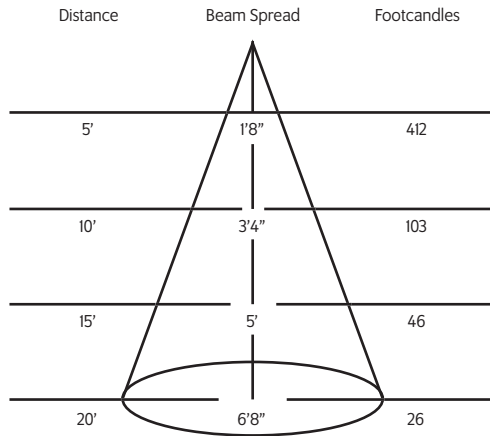
**Example:** LED2IP-B-120-19-T1-SPI

LED2IP- \_\_\_\_\_ - \_\_\_\_\_ - \_\_\_\_\_ - \_\_\_\_\_ - \_\_\_\_\_

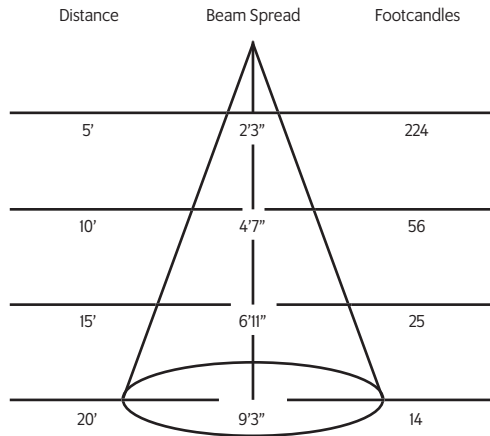
\* Specification sheets are subject to change without notice.

## Photometric Data

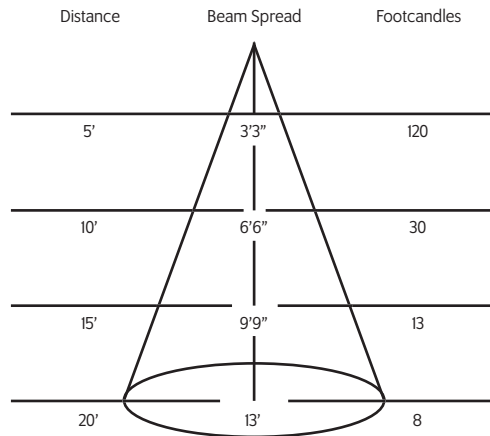
### 19° LENS TUBE



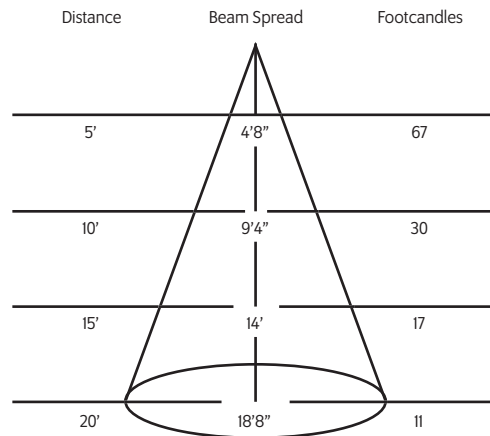
### 26° LENS TUBE



### 36° LENS TUBE



### 50° LENS TUBE



## Mounting Options

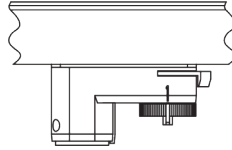
**TI** Track Adapter for commercial grade 1 & 2 circuit track. 120V. For use with larger, heavier fixtures.

**TA1 / TE2** (2 ckt) Track adapter for E-Series specification grade track. 1 or 2 circuit. 120V.

**TA2 / HTA2 (277V)** Track adapter for G-Series specification grade 2-circuit track. 120V or 277V.

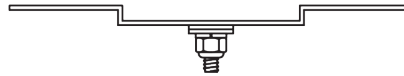
**STA** 2 circuit track adapter for Data Bus. Specification grade track. 120V.

**TA3** Track adapter for G-Series specification grade 3-circuit track. 120V.



**CMI** Shallow canopy for J-Box.

**US1** 6 5/8" x 1 1/2" Unistrut Adapter



**TB8** 8" x 8" Portable table base for floor and table use



**MC** Light duty pipe clamp for small fixtures. For pipes up to 1 5/16" O.D.

**MN** Medium duty pipe clamp for small to large fixtures. For pipes up to 2" O.D.

## Accessories

|              |                                 |
|--------------|---------------------------------|
| <b>SPI</b>   | Stock Pattern Steel             |
| <b>CPI</b>   | Custom Steel Pattern            |
| <b>PH2</b>   | Pattern Holder                  |
| <b>CC18</b>  | Coiled Cord                     |
| <b>4MCF</b>  | Source Four Mini Color Frame    |
| <b>4MTH</b>  | Source Four Mini Top Hat        |
| <b>4MTHS</b> | Source Four Mini Top Hat Short  |
| <b>4MHH</b>  | Source Four Mini Half Hat       |
| <b>4MHHS</b> | Source Four Mini Half Hat Short |
| <b>4MDN</b>  | Source Four Mini Donut          |

## Extension Wands

|              |               |
|--------------|---------------|
| <b>SP 12</b> | 12" Stem      |
| <b>SP 18</b> | 18" Stem      |
| <b>SP 24</b> | 24" Stem      |
| <b>SP X</b>  | Custom Length |

## Patterns

For standard and custom patterns please see the pattern specification sheet. For a complete list, please contact a Times Square Lighting representative.

View Patterns: <http://tsq.li/2bMBz3l>



#### Notes on Dimming:

**TE** This means the fixture will work on MOST quality Trailing Edge dimmers. These dimmer types are also known as Reverse Phase or Electronic Low Voltage (ELV), and are available as wall mount and rack mount modules.

**LE** This means the fixture will work on MOST quality Leading Edge dimmers. These dimmer types are also known as Forward Phase, Incandescent, Halogen or Triac, and are available as wall mount and rack mount modules.

**0-10V** This means the fixture will work on MOST quality 0-10V or 1-10V dimmers. These dimmer types are also known as Fluorescent, and are available as wall mount and rack mount modules.

**IP** This means the fixture has a dimmer BUILT IN to the fixture itself, and will dim to about 50%. It has an integral potentiometer located on the bottom of the driver housing. This fixture WILL NOT function with EXTERNAL wall or rack dimmers.

It is impractical to test every fixture type with every dimmer type, and some combinations work better than others, while some not at all.

It is advisable to pretest a particular fixture with an intended dimmer beforehand to insure that the combination will work as expected.

Some dimmers will allow for full-range dimming, while others will only dim to 50%.

Some dimmers will work well within a certain range, and perhaps flicker or shut off at the lowest settings, rendering that portion of the range unusable.

Most if not all dimmers have a maximum LED load that can be applied, often as little as 10% of its nominally rated value.

Dimming LEDs can actually extend their life expectancy, and will not affect the color temperature or CRI.