

G-Series Specification

Grade 2-Circuit 120 Volt Track
(2-HOT 2-NEUTRAL)



5 Holt Drive,
Stony Point, NY 10980
845-947-3034
info@tslight.com

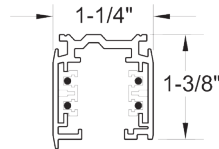
Track Section Ordering Matrix

| Model | Section Length | Finish |
|-------|----------------|-------------------|
| TS | 4 = 4 ft. | B = Black |
| | 8 = 8 ft. | W = White |
| | 12 = 12 ft. | 1 = Natural (raw) |

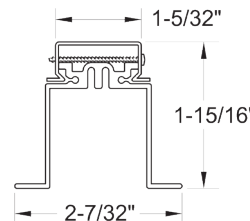
Recessed Sleeve Ordering Matrix

| Model | Section Length | Finish |
|-------------------|------------------------|----------------------|
| FTP = Flanged | 44 = 4 ft. | B = Black (FTP Only) |
| FTPX = Flangeless | 48 = 8 ft. | W = White (FTP Only) |
| | 412 = 12 ft (FTP Only) | 1 = Natural (raw) |

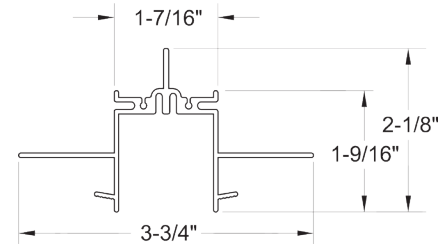
Track Section



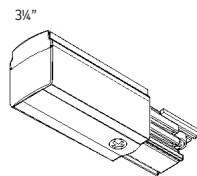
FTP Flanged Track Sleeve with SKB-10 Installed



FTPX Flangeless Track Sleeve

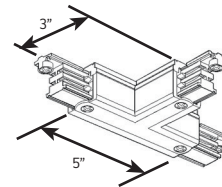


COMPONENTS (Add suffix B-Black, W-White, S=Silver)



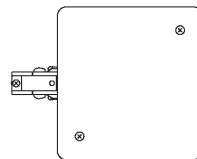
TEK 11
TEK 12 (mirror)
End Feed

Used when energizing track from an outlet box or conduit feed.



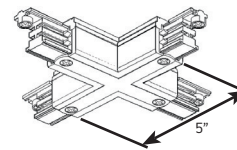
TEK 39 (right)
TEK 40 (left)
T Connector/Feed

Used to join three sections of track in a "T" configuration. May be used as a feed point.



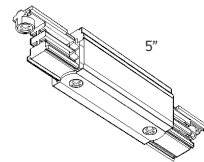
TSC-T
Live End with Power Limiter

<https://tsq.li/current-limiters>



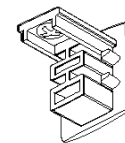
TEK38 X Connector

Used to join four sections of track together in an "X" configuration. May be used as a feed point.



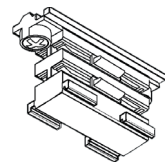
TEK 14
Center Feed

Used to join two sections of track together in a straight line. May be used as a feed point.



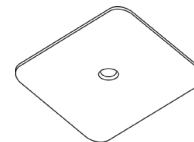
XTSA 41 (track section)
FTP 41 (recessed jacket)
End Caps

Used to end any open configuration of track.



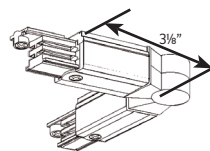
XTSA 21
Straight Connector

Used to join two sections of track together in a straight line.



GES 15
J-Box Cover

Used to cover an outlet box.



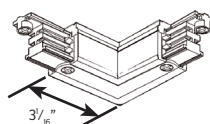
TEK 24
Adjustable L Connector

Used to join two sections of track together to create angles between 60° and 300°



XTSAJ 10
Conduit Adapter

Used to attach power to any live feed.



TEK 34
L Connector/Feed

Used to join two sections of track together at a 90° angle. May be used as a feed point.



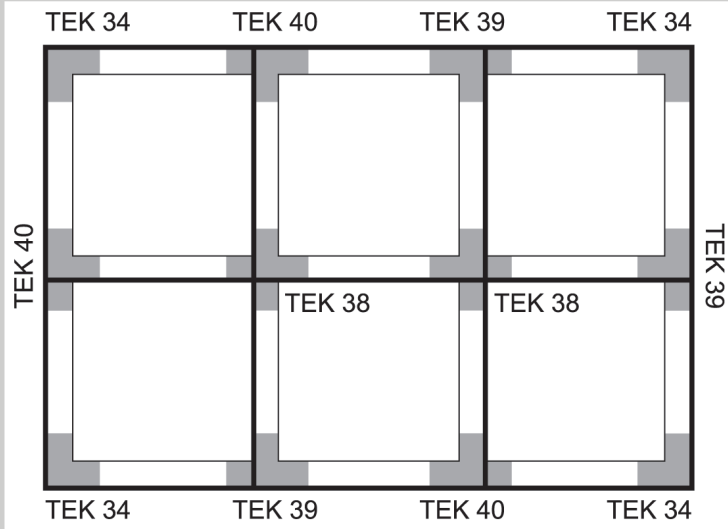
XTSV 12
Bending Tool

Used after field cutting to bend the conductor ends to a 90° angle. Use the opposite end of the tool to measure the correct position of the bent conductors.

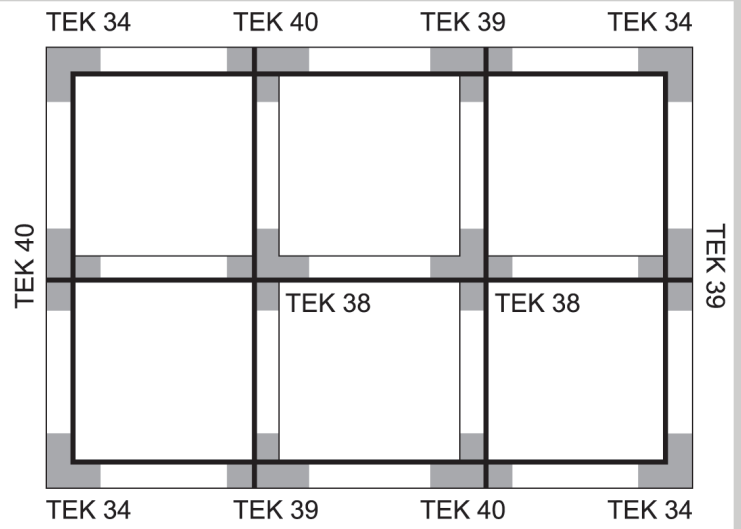
POLARITY DIAGRAMS

The track is polarized and therefore direction sensitive. There is a raised ridge (indicated by the thick black line) on one side of the track to ensure a proper connection. Please follow these diagrams to help aid you in your selection of connectors.

Ridge Outside of Grid



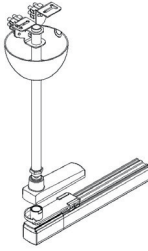
Ridge Inside of Grid



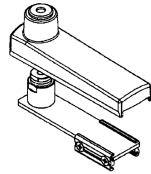
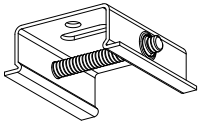
PENDANT MOUNT *(Add suffix B-Black, W-White, S=Silver)*

3/8" Stem and canopy kit for mechanical and electrical suspension.

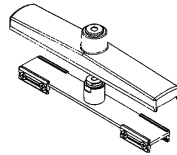
- 12 in. SPUS 12
- 18 in. SPUS 18
- 24 in. SPUS 24
- 36 in. SPUS 36
- 48 in. SPUS 48
- Custom lengths available.



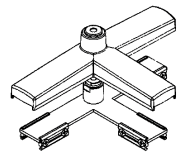
SKB-10
Cable and pendant clip.



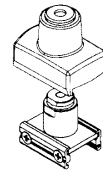
SP 4E
End feed suspension bracket for mechanical and electrical connection to the track.



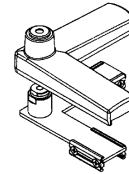
SP 4I
Center feed suspension bracket for mechanical and electrical connection to the track.



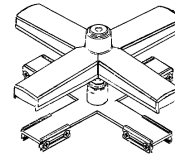
SP 4T
"T" suspension bracket for mechanical and electrical connection to the track.



SP 4P
Point suspension bracket for mechanical connection to the track.



SP 4L
"L" suspension bracket for mechanical and electrical connection to the track.



SP 4X
"X" suspension bracket for mechanical and electrical connection to the track.

Cable Kit w/Canopy

(Add suffix B-Black, W-White)

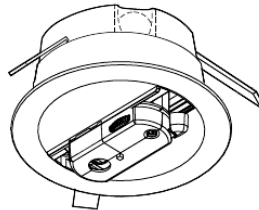
- 24 in. CG 24
- 48 in. CG 48
- 72 in. CG 72
- Custom lengths available.



Monopoint Canopy

(Add suffix B-Black, W-White)

XTSA70



Power Outlet Adapter

(Add suffix B-Black, W-White)

TEK67

