



Tucker Series

900 - 3000 LUMENS



5 Holt Drive
Stony Point, NY 10980
845-947-3034
info@tslight.com

Manufactured in the USA - IBEW

PRODUCT LISTED
BY A NATIONALLY
RECOGNIZED
TESTING
LABORATORY

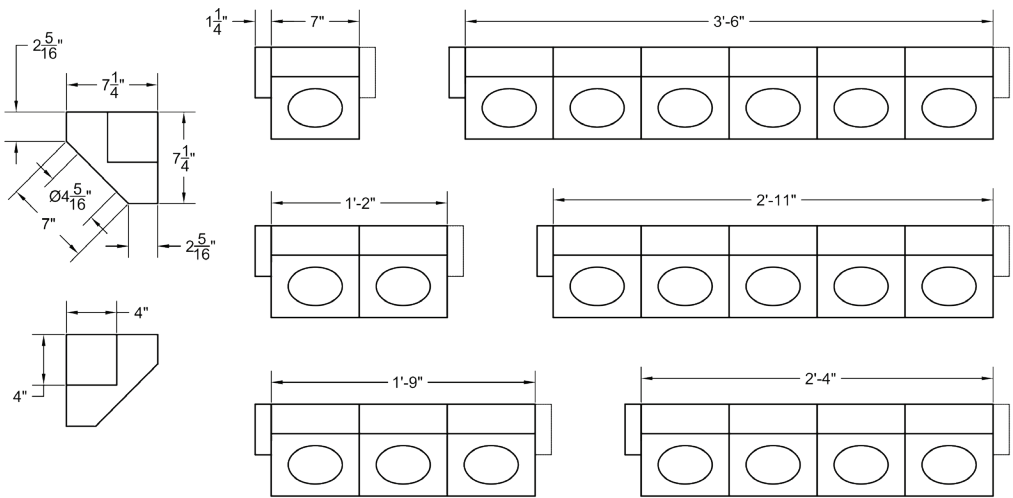


Features

- 100,000 Hour life per LED
- 20°, 40°, and 60°
Field-changeable reflectors
- **Choice of color temperatures:** 2700° K, 3000°K, 3500°K, 4000°K, 5000°K, 5700°K, 6500°K
- Each LED is individually mounted for up to 15° pan and tilt
- Accepts a variety of lenses and accessories.
- Fully enclosed wiring compartment
- Black, white, silver and bronze available - custom colors upon request

Dimming

- **Trailing edge (ELV):** 120V / 277V
- **Leading edge (Triac):** 120V only
- **0-10V:** 120V / 277V



LED

- Cree XLamp LED array
- **Color temp options:** 2700° K, 3000°K, 3500°K, 4000°K, 5000°K, 5700°K, 6500°K
- **CRI:** 80 standard or 92 optional
- Lumen maintenance: 90% of initial lumen output at 33,000 hours on LM-80 testing
- No UV or IR

Model	CRI	Total Wattage	Lumens	Efficacy (Lm/W)
TU9	80 / 92	5.6 / 6.4	900 / 900	161 / 141
TU12	80 / 92	7.7 / 9.0	1200 / 1200	156 / 133
TU15	80 / 92	9.7 / 11.4	1500 / 1500	155 / 132
TU18	80 / 92	11.4 / 15.0	1800 / 1800	158 / 120
TU20	80 / 92	13.3 / 15.8	2000 / 2000	150 / 127
TU25	80 / 92	18.0 / 23.4	2500 / 2500	139 / 107
TU27	92	25.0	2700	108
TU30	80	23.4	3000	128

Photometric Data

Distance	20° Spot Reflector Beam Spread	Footcandles						
		TU9	TU12	TU15	TU18	TU20	TU25	TU30
5'	1.7"	126	170	220	241	268	344	440
10'	3.5"	31	43	55	60	67	86	110
15'	5.3"	14	19	24	27	30	38	49
20'	7.1"	8	11	14	15	17	22	28
25'	8.8"	5	7	9	10	11	14	18
30'	10.6"	-	6	6	7	7	10	12

Distance	40° Medium Flood Reflector Beam Spread	Footcandles						
		TU9	TU12	TU15	TU18	TU20	TU25	TU30
5'	3.6"	74	100	130	144	160	204	260
10'	7.3"	19	25	33	36	40	51	65
15'	10.9"	8	11	15	16	18	23	29
20'	14.6"	5	6	8	9	10	13	16
25'	18.2"	-	-	5	6	6	8	10
30'	22.2"	-	-	-	-	-	6	7

Distance	60° Flood Reflector Beam Spread	Footcandles						
		TU9	TU12	TU15	TU18	TU20	TU25	TU30
5'	5.7"	39	54	70	85	97	128	148
10'	11.6"	10	14	18	21	24	32	37
15'	17.3"	5	6	8	9	11	14	16
20'	23.1"	-	5	5	5	6	8	9
25'	28.9"	-	-	-	-	5	5	6
30'	35.2"	-	-	-	-	-	-	-

