

Cornerstone Series



Ideal for schools, houses of worship, malls and hotels where a high ceiling line requires a compact, architectural fixture. The Cornerstone was designed to mount snug, vertically wall-to-wall, or horizontally ceiling-to-wall. The Cornerstone can be ordered as a single cell or multiple cell housing. Numerous lumen packages, color temperatures and beam spreads are available.

5 Holt Drive
Stony Point, NY 10980
845-947-3034
info@tslight.com

Black, White, Silver and Bronze finishes are standard. Custom colors are available upon request. We do follow the RAL color chart.

Manufactured in the USA - IBEW

PRODUCT LISTED
BY A NATIONALLY
RECOGNIZED
TESTING
LABORATORY

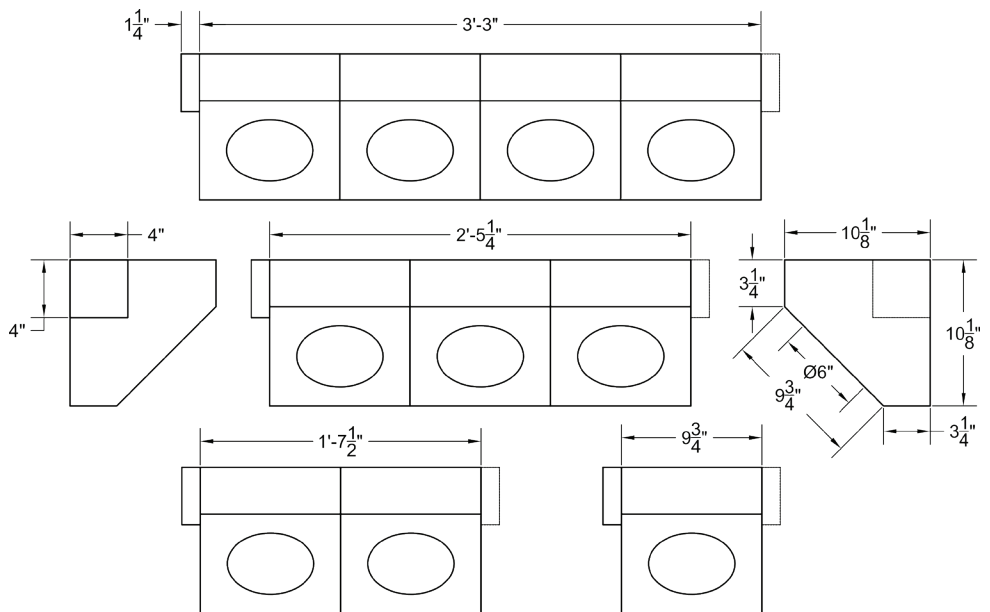


Features

- 100,000 Hour life per LED
- 20°, 40°, and 60° Field-changeable reflectors
- **Choice of color temperatures:** 2700° K, 3000°K, 3500°K, 4000°K, 5000°K, 5700°K, 6500°K
- Each LED is individually mounted for up to 15° pan and tilt
- Accepts a variety of lenses and accessories.
- Fully enclosed wiring compartment
- Black, white, silver and bronze available - custom colors upon request

Dimming

- Trailing edge (ELV): 120V / 277V
- Leading edge (Triac): 120V only
- 0-10V: 120V / 277V



LED

- Cree XLamp LED array
- **Color temp options:** 2700° K, 3000°K, 3500°K, 4000°K, 5000°K, 5700°K, 6500°K
- CRI: 80 standard or 92 optional
- Lumen maintenance: 90% of initial lumen output at 33,000 hours on LM-80 testing
- No UV or IR

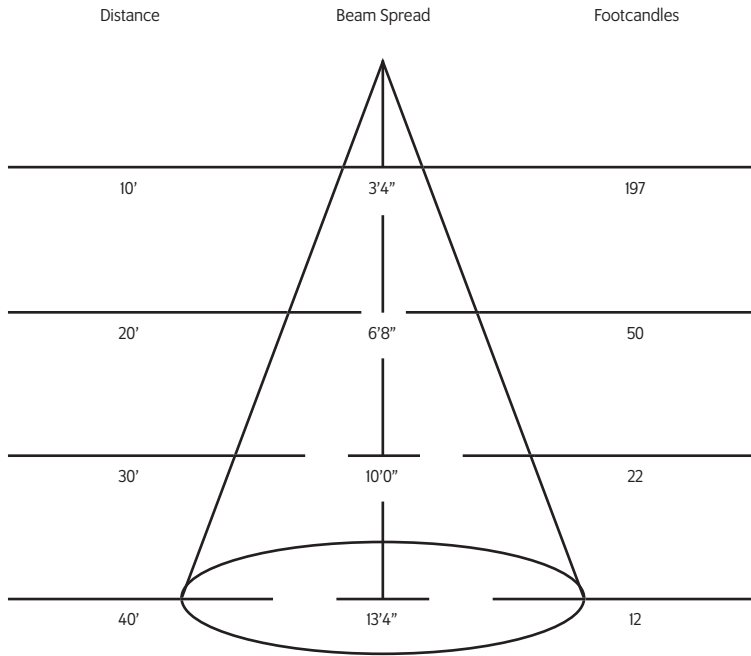
| Model | CRI | Total Wattage | Lumens | Efficacy (Lm/W) |
|-------|-----|---------------|--------|-----------------|
| CO41 | 92 | 39 | 4100 | 105 |
| CO47 | 92 | 43 | 4700 | 109 |
| CO50 | 80 | 39 | 5000 | 128 |
| CO53 | 92 | 52 | 5300 | 102 |
| CO56 | 80 | 43 | 5600 | 130 |
| CO62 | 80 | 52 | 6200 | 119 |

*Specification sheets are subject to change without notice.

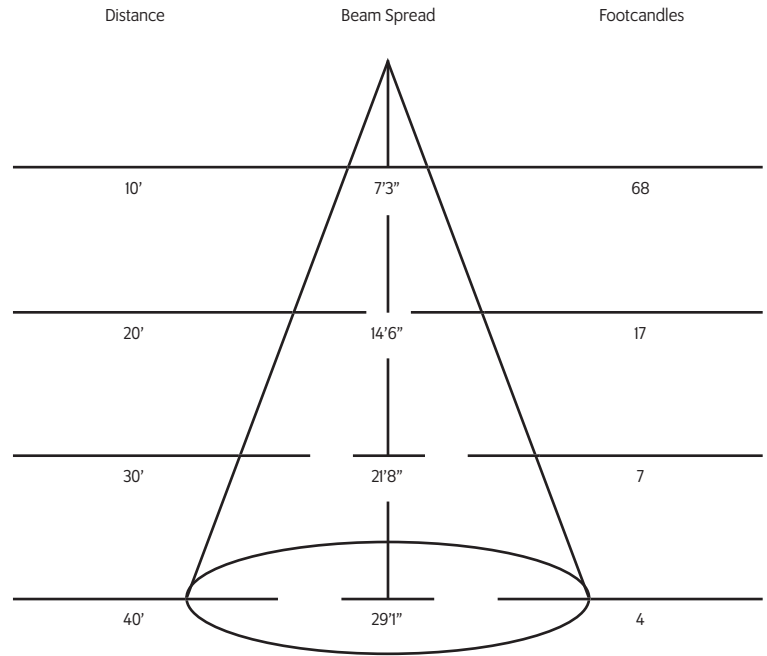
Photometric Data

Results for 5,000 Lumen Output. For other Lumen outputs, use the other lumen output multipliers chart.

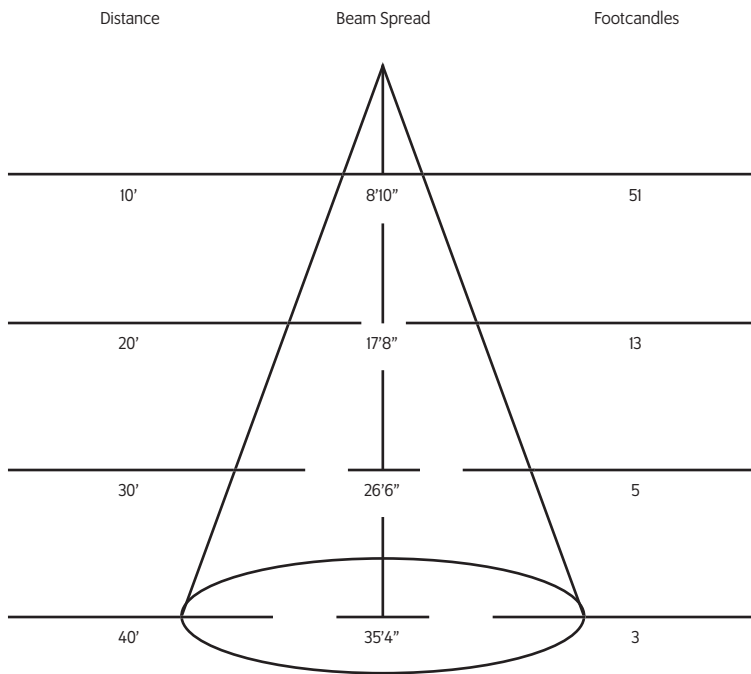
20° Spot Reflector



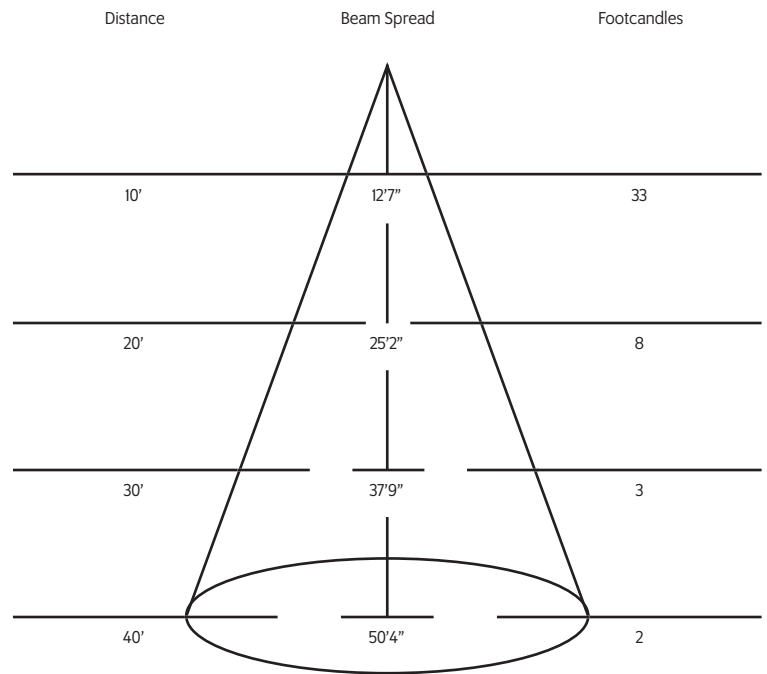
40° Spot Reflector



48° Spot Reflector



64° Spot Reflector



Other Lumen Output Multipliers

| FOR 80 CRI LUMEN OUTPUT | FOOTCANDLES |
|-------------------------|-------------|
| 5600 | 1.12 |
| 6200 | 1.24 |

| FOR 90 CRI LUMEN OUTPUT | FOOTCANDLES |
|-------------------------|-------------|
| 4100 | .82 |
| 4700 | .94 |
| 5300 | 1.06 |

