

# G-Series Specification

Grade 2-Circuit 120 Volt Track  
(2-HOT 2-NEUTRAL)



5 Holt Drive,  
Stony Point, NY 10980  
845-947-3034  
info@tslight.com

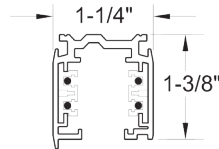
## Track Section Ordering Matrix

Model	Section Length	Finish
TS	4 = 4 ft.	B = Black
	8 = 8 ft.	W = White
	12 = 12 ft.	1 = Natural (raw)

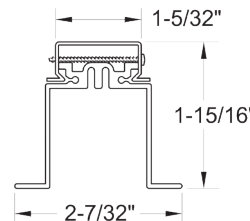
## Recessed Sleeve Ordering Matrix

Model	Section Length	Finish
FTP = Flanged	44 = 4 ft.	B = Black (FTP Only)
FTPX = Flangeless	48 = 8 ft.	W = White (FTP Only)
	412 = 12 ft (FTP Only)	1 = Natural (raw)

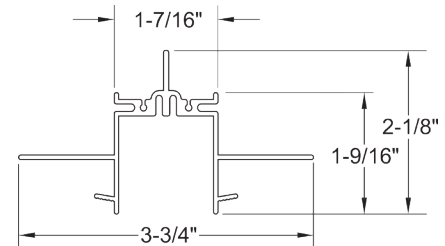
Track Section



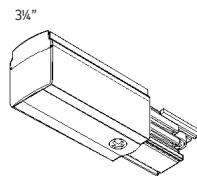
FTP Flanged Track Sleeve with SKB-10 Installed



FTPX Flangeless Track Sleeve

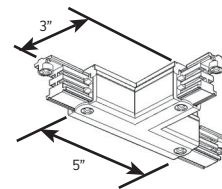


## COMPONENTS (Add suffix B-Black, W-White, S=Silver)



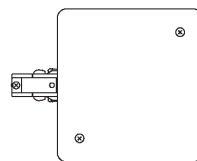
**TEK 11 End Feed**

Used when energizing track from an outlet box or conduit feed.



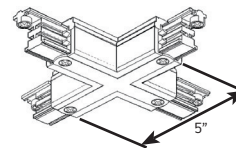
**TEK 39 (right) TEK 40 (left) T Connector/Feed**

Used to join three sections of track in a "T" configuration. May be used as a feed point.



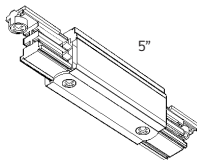
**TSC-T Live End with Power Limiter**

\* See Track Current Limiters Specification Sheet.



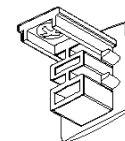
**TEK38 X Connector**

Used to join four sections of track together in an "X" configuration. May be used as a feed point.



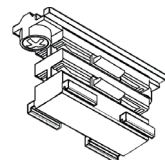
**TEK 14 Center Feed**

Used to join two sections of track together in a straight line. May be used as a feed point.



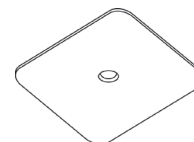
**XTSA 41 (track section) FTP 41 (recessed jacket) End Caps**

Used to end any open configuration of track.



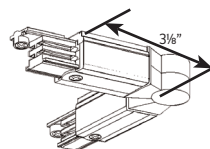
**XTSA 21 Straight Connector**

Used to join two sections of track together in a straight line.



**GES 15 J-Box Cover**

Used to cover an outlet box.



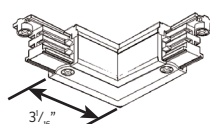
**TEK 24 Adjustable L Connector**

Used to join two sections of track together to create angles between 60° and 300°



**XTSAJ 10 Conduit Adapter**

Used to attach power to any live feed.



**TEK 34 L Connector/Feed**

Used to join two sections of track together at a 90° angle. May be used as a feed point.



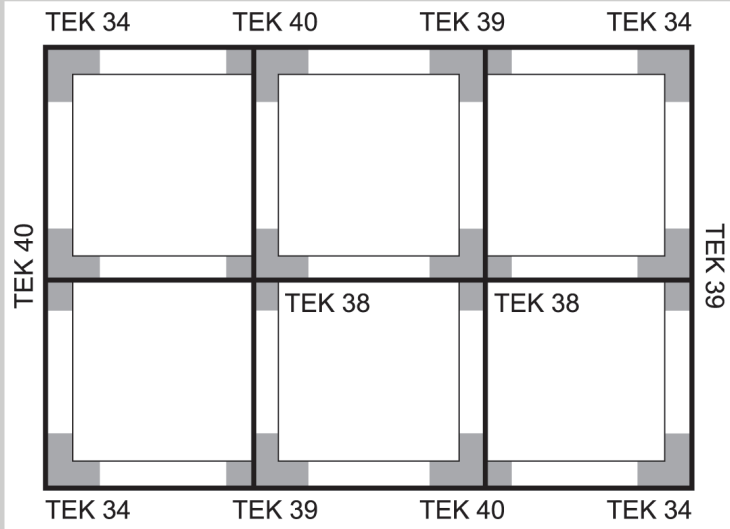
**XTSV 12 Bending Tool**

Used after field cutting to bend the conductor ends to a 90° angle. Use the opposite end of the tool to measure the correct position of the bent conductors.

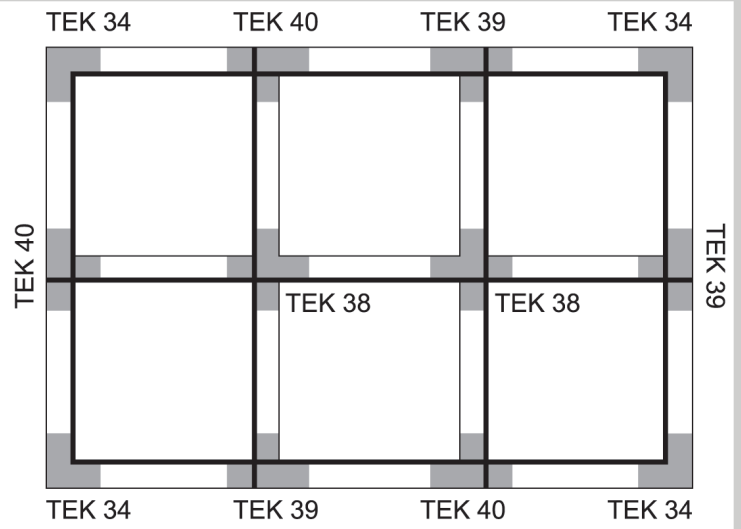
## POLARITY DIAGRAMS

The track is polarized and therefore direction sensitive. There is a raised ridge (indicated by the thick black line) on one side of the track to ensure a proper connection. Please follow these diagrams to help aid you in your selection of connectors.

### Ridge Outside of Grid



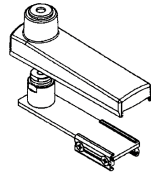
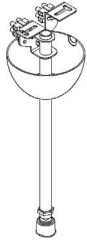
### Ridge Inside of Grid



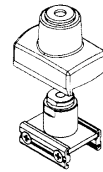
## PENDANT MOUNT *(Add suffix B-Black, W-White, S=Silver)*

3/8" Stem and canopy kit for mechanical and electrical suspension.

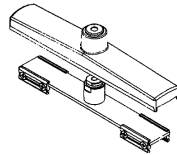
- 12 in. SPUS 12
- 18 in. SPUS 18
- 24 in. SPUS 24
- 36 in. SPUS 36
- 48 in. SPUS 48
- Custom lengths available.



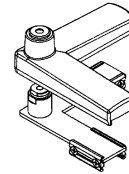
**SP 4E**  
End feed suspension bracket for mechanical and electrical connection to the track.



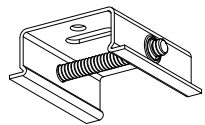
**SP 4P**  
Point suspension bracket for mechanical connection to the track.



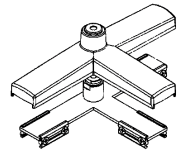
**SP 4I**  
Center feed suspension bracket for mechanical and electrical connection to the track.



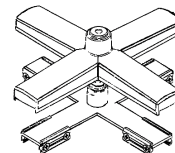
**SP 4L**  
"L" suspension bracket for mechanical and electrical connection to the track.



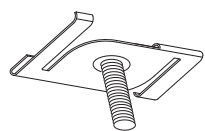
**SKB-12**  
Cable and pendant clip.



**SP 4T**  
"T" suspension bracket for mechanical and electrical connection to the track.



**SP 4X**  
"X" suspension bracket for mechanical and electrical connection to the track.

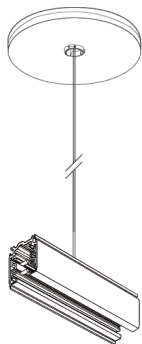


**SKBX-12**  
Grid Clip.

### Cable Kit w/Canopy

*(Add suffix B-Black, W-White)*

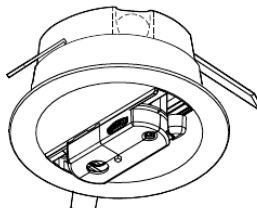
- 24 in. CG 24
- 48 in. CG 48
- 72 in. CG 72
- Custom lengths available.



### Monopoint Canopy

*(Add suffix B-Black, W-White)*

XTSA70



### Power Outlet Adapter

*(Add suffix B-Black, W-White)*

TEK67

