

TRI & TRH TRIBECA DMX

LED PATTERN & FRAMING PROJECTOR

MANUFACTURED IN THE UNITED STATES - IBEW



PRODUCT LISTED
BY A NATIONALLY
RECOGNIZED
TESTING
LABORATORY



The Tribeca DMX is a powerful LED pattern and framing projector that utilizes the CREE XLamp LED array. This unit will deliver a powerful, crisp projection for longer throw applications, all while staying within a fixture size that is capable of being both track and canopy mounted. Additionally, each unit is equipped with framing shutters for precise beam shaping. A wide selection of standard patterns (gobos) are available. Custom patterns are also available by simply sending us a PDF of your desired pattern via email.

LED

- Color Temperature Options: 2700K, 3000K, 3500K, 4000K
- CRI: 80 Standard, 92 or 98 Optional
- CREE XLamp LED array
- No UV or IR

MODEL	MODULE	TOTAL WATTAGE*	LUMENS	EFFICACY (LM/W)	CRI
TRI	80	27	3075	114	80
TRI	92	27	2650	98	92
TRI	98	27	2370	88	98
TRH	80	45	4800	106	80
TRH	92	45	4200	93	92
TRH	98	45	4000	89	98

* Total wattage equals LED plus driver. Delivered lumen may vary depending on LED module, color temperature, optics, and accessories. Testing done with 3000K LED array.

FEATURES

- 100-277 Volt available
- 50,000 hour lamp life
- Framing shutters included
- Stock or custom, steel or glass patterns
- Dimmable (optional)
- Numerous mounting options and accessories

CONSTRUCTION

- Steel housing with black, white or silver finish
- Accepts up to 2 accessories
- Weight: 5.5 lbs.

DIMMING

- Supports DMX / RDM dimming
- Dims to 0.1%
- Logarithmic dimming curve

ELECTRICAL

- Integral electronic driver
- 100-277V, 50/60Hz
- Meets FCC 47 CFR Part 15/18 Requirements
- 27 Watts or 45 Watts

OPTICS

- 20° - 40° Zoom Optics System
- 25° - 50° Zoom Optics System

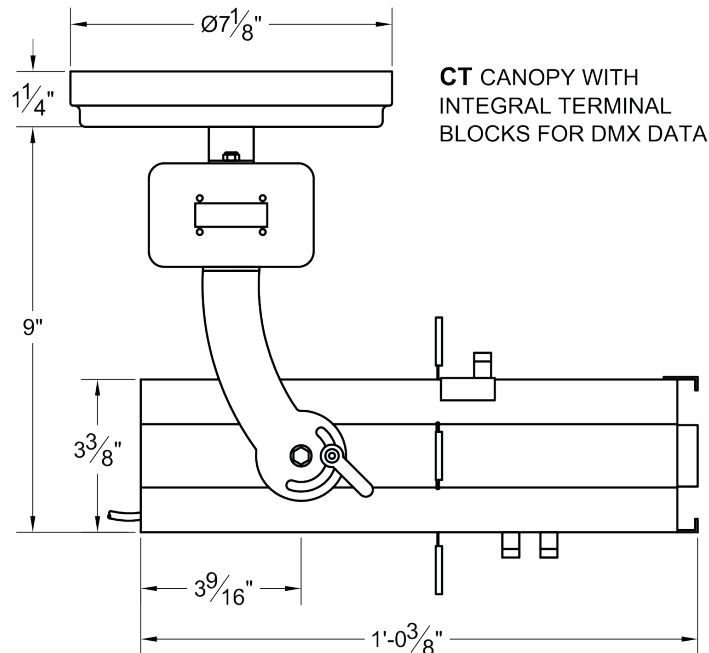
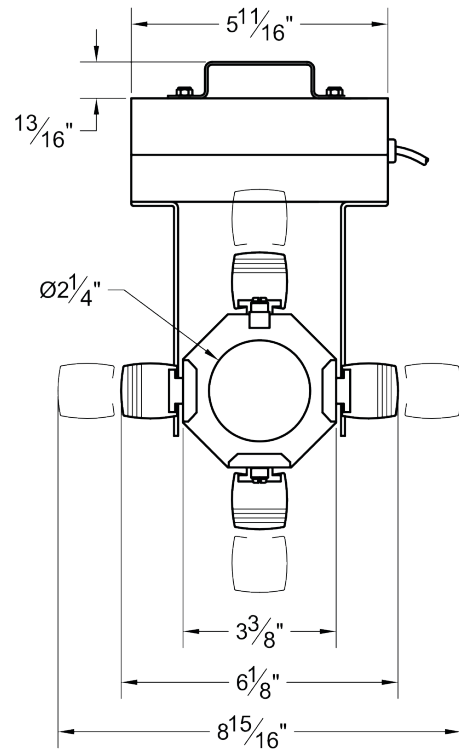
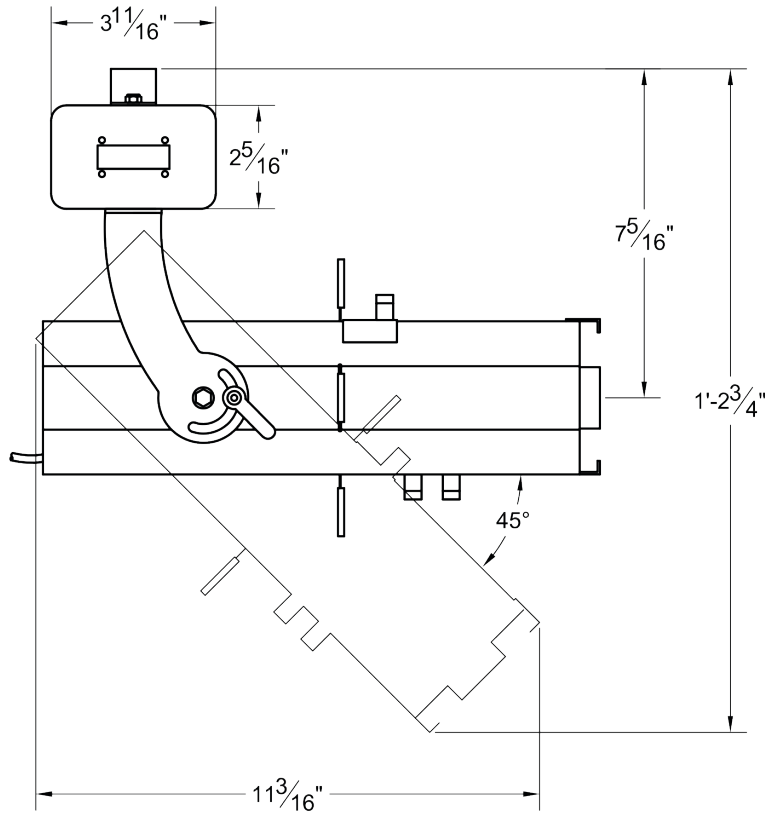
Maximum Operating Temperature: 35° C • Maximum Operating Angle: 45° from Vertical


TRI & TRH TRIBECA DMX

LED PATTERN & FRAMING PROJECTOR

MANUFACTURED IN THE UNITED STATES - IBEW

PRODUCT LISTED
BY A NATIONALLY
RECOGNIZED
TESTING
LABORATORY



MOUNTING OPTIONS	ACCESSORIES																						
<p>DT2 Track adapter for SpecTrac 2-Circuit data track, 120V.</p> <p>HDT2 Track adapter for SpecTrac 2-Circuit, data track, 277V.</p> <p>US1 6-5/8" x 1-1/2" Unistrut Adapter</p> <p>TB8 8" x 8" Portable table base for floor and table use</p> <p>MC Light duty pipe clamp for small fixtures. For pipes up to 1 5/16" O.D.</p> <p>MN Medium duty pipe clamp for small to large fixtures. For pipes up to 2" O.D.</p> <p>PC9M Heavy duty pipe clamp for large, heavy fixtures. For pipes up to 2" O.D.</p> <p>CT Terminal Blocks in canopy.</p>	<table border="0"> <tr><td>CF6</td><td>Color Frame</td></tr> <tr><td>SN6</td><td>Snoot/Hood</td></tr> <tr><td>PH6</td><td>Pattern Holder</td></tr> <tr><td>PD6</td><td>Pattern Donut</td></tr> <tr><td>SPE</td><td>Stock Pattern Steel</td></tr> <tr><td>CPE</td><td>Custom Pattern Steel</td></tr> <tr><td>GPE</td><td>Custom Pattern Glass</td></tr> <tr><td>DF6</td><td>Dichroic Color Filter</td></tr> <tr><td>GF6-702</td><td>UV Blocking Filter</td></tr> <tr><td>CC18</td><td>Coiled Cord</td></tr> <tr><td>5300</td><td>Mini Spin (variable speed pattern rotator)</td></tr> </table>	CF6	Color Frame	SN6	Snoot/Hood	PH6	Pattern Holder	PD6	Pattern Donut	SPE	Stock Pattern Steel	CPE	Custom Pattern Steel	GPE	Custom Pattern Glass	DF6	Dichroic Color Filter	GF6-702	UV Blocking Filter	CC18	Coiled Cord	5300	Mini Spin (variable speed pattern rotator)
CF6	Color Frame																						
SN6	Snoot/Hood																						
PH6	Pattern Holder																						
PD6	Pattern Donut																						
SPE	Stock Pattern Steel																						
CPE	Custom Pattern Steel																						
GPE	Custom Pattern Glass																						
DF6	Dichroic Color Filter																						
GF6-702	UV Blocking Filter																						
CC18	Coiled Cord																						
5300	Mini Spin (variable speed pattern rotator)																						
<p>EXTENSION WANDS</p> <table border="0"> <tr><td>SP 12</td><td>12" Stem</td></tr> <tr><td>SP 18</td><td>18" Stem</td></tr> <tr><td>SP 24</td><td>24" Stem</td></tr> <tr><td>SP X</td><td>Custom Length</td></tr> </table>	SP 12	12" Stem	SP 18	18" Stem	SP 24	24" Stem	SP X	Custom Length	<p>NOTES ON DIMMING</p> <p>Visit tslight.com/resources or scan the QR Code.</p> <div data-bbox="1015 1081 1266 1333" style="text-align: center;">  </div>														
SP 12	12" Stem																						
SP 18	18" Stem																						
SP 24	24" Stem																						
SP X	Custom Length																						

TRI & TRH TRIBECA DMX

LED PATTERN & FRAMING PROJECTOR

MANUFACTURED IN THE UNITED STATES - IBEW

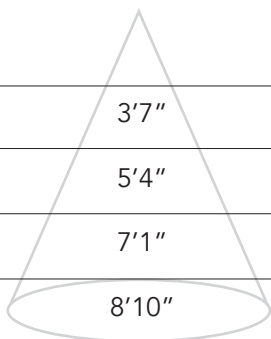
PRODUCT LISTED
BY A NATIONALLY
RECOGNIZED
TESTING
LABORATORY



PHOTOMETRIC DATA

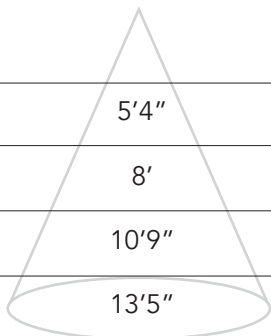
20° Degree Setting

Distance	Beam Spread	27W Footcandles	45W Footcandles
10'	3'7"	180	310
15'	5'4"	80	137
20'	7'1"	45	78
25'	8'10"	29	50



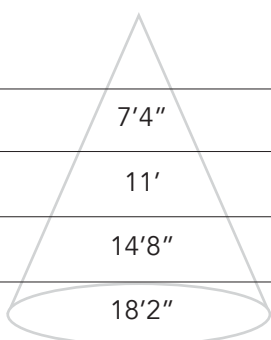
30° Degree Setting

Distance	Beam Spread	27W Footcandles	45W Footcandles
10'	5'4"	133	230
15'	8'	59	102
20'	10'9"	33	58
25'	13'5"	21	37



40° Degree Setting

Distance	Beam Spread	27W Footcandles	45W Footcandles
10'	7'4"	67	115
15'	11'	30	51
20'	14'8"	17	29
25'	18'2"	11	18





SLINGSHOT

The Slingshot allows you to cast the output of a Times Square Lighting ellipsoidal at a right angle. This allows flexibility in situations when the fixture is mounted horizontally but the desired aiming angle is vertical (or vice versa).

- LENGTH: 6-3/4"
- WIDTH: 4"
- DEPTH: 4"
- RANGE OF MOTION: 0° to 44°

MODEL	COLOR
SLMB	Black Slingshot
SLMW	White Slingshot

PATTERNS

For standard and custom patterns, see the pattern specification sheet. QR Code is provided below.



NOTES ON DIMMING

Visit tslight.com/resources or scan the QR Code.



TRI & TRH TRIBECA DMX

LED PATTERN & FRAMING PROJECTOR

MANUFACTURED IN THE UNITED STATES - IBEW

PRODUCT LISTED
BY A NATIONALLY
RECOGNIZED
TESTING
LABORATORY



SPECIFY:

MODEL	LED MODULE	COLOR TEMPERATURE	FINISH
TRI ◊ TRH ◊ TRI5 ◊◊ TRH5 ◊◊	80 92 98 **	27 = 2700K 30 = 3000K 35 = 3500K 40 = 4000K	B = Black W = White S = Silver CC = Custom Color
VOLTAGE	MOUINTG	DIMMING †	ACCESSORIES
100 *** 120 240 277	See Mounting Options for Ordering Codes	DXE = DMX Enhanced	See Accessory Options for Ordering Codes

* Not available with TRH
 ** 2700K and 3000K Only

† See "Notes on Dimming"
 ◊ 20° - 40° Zoom Optics
 ◊◊ 25° - 50° Zoom Optics

ORDERING INFORMATION

PROJECT:	
LOCATION:	
QUANTITY:	
CONTACT:	
PHONE:	
EMAIL:	

EXAMPLE: TRI-8030-B-120-DT2-DXE-CF6

MODEL	LED MODULE	COLOR TEMPERATURE	FINISH	VOLTAGE	MOUNTING	DIMMING	ACCESSORIES