

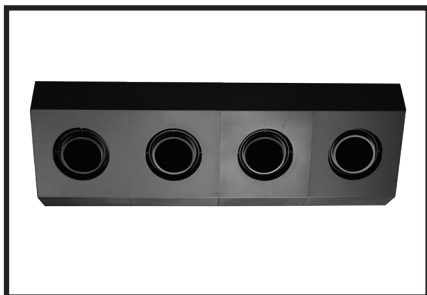
CORNERSTONE SERIES

4100 - 6200 LUMEN SURFACE ADJUSTABLE ACCENT

MANUFACTURED IN THE UNITED STATES - IBEW



PRODUCT LISTED
BY A NATIONALLY
RECOGNIZED
TESTING
LABORATORY



Ideal for schools, houses of worship, malls and hotels where a high ceiling line requires a compact, architectural fixture. The Cornerstone was designed to mount snug, vertically wall-to-wall, or horizontally ceiling-to-wall. **The Cornerstone can be ordered as a single cell or multiple cell housing.** Numerous lumen packages, color temperatures and beam spreads are available.

Black, White, Silver and Bronze finishes are standard. Custom colors are available upon request. We do follow the RAL color chart.

FEATURES

- 100,000 Hour life per LED
- 20°, 40°, and 60° Field-changeable reflectors
- **Choice of Color Temperatures:** 2700° K, 3000°K, 3500°K, 4000°K, 5000°K, 5700°K, 6500°K
- Each LED is individually mounted for up to 15° pan and tilt
- Accepts a variety of lenses and accessories
- Fully enclosed wiring compartment
- Black, white, silver and bronze available - custom colors upon request

LED SPECIFICATIONS

- Cree XLamp LED array
- **Color Temperature Options:** 2700° K, 3000°K, 3500°K, 4000°K, 5000°K, 5700°K, 6500°K
- CRI: 80 standard or 92 optional
- **Lumen Maintenance:** 90% of initial lumen output at 33,000 hours on LM-80 testing
- No UV or IR

MODEL	CRI	TOTAL WATTAGE	LUMENS	EFFICACY (LM/W)
C041	92	39	4100	105
C047	92	43	4700	109
C050	80	39	5000	128
C053	92	52	5300	102
C056	80	43	5600	130
C062	80	52	6200	119

DIMMING

- Trailing edge (ELV): 120V / 277V
- Leading edge (Triac): 120V only
- 0-10V: 120V / 277V

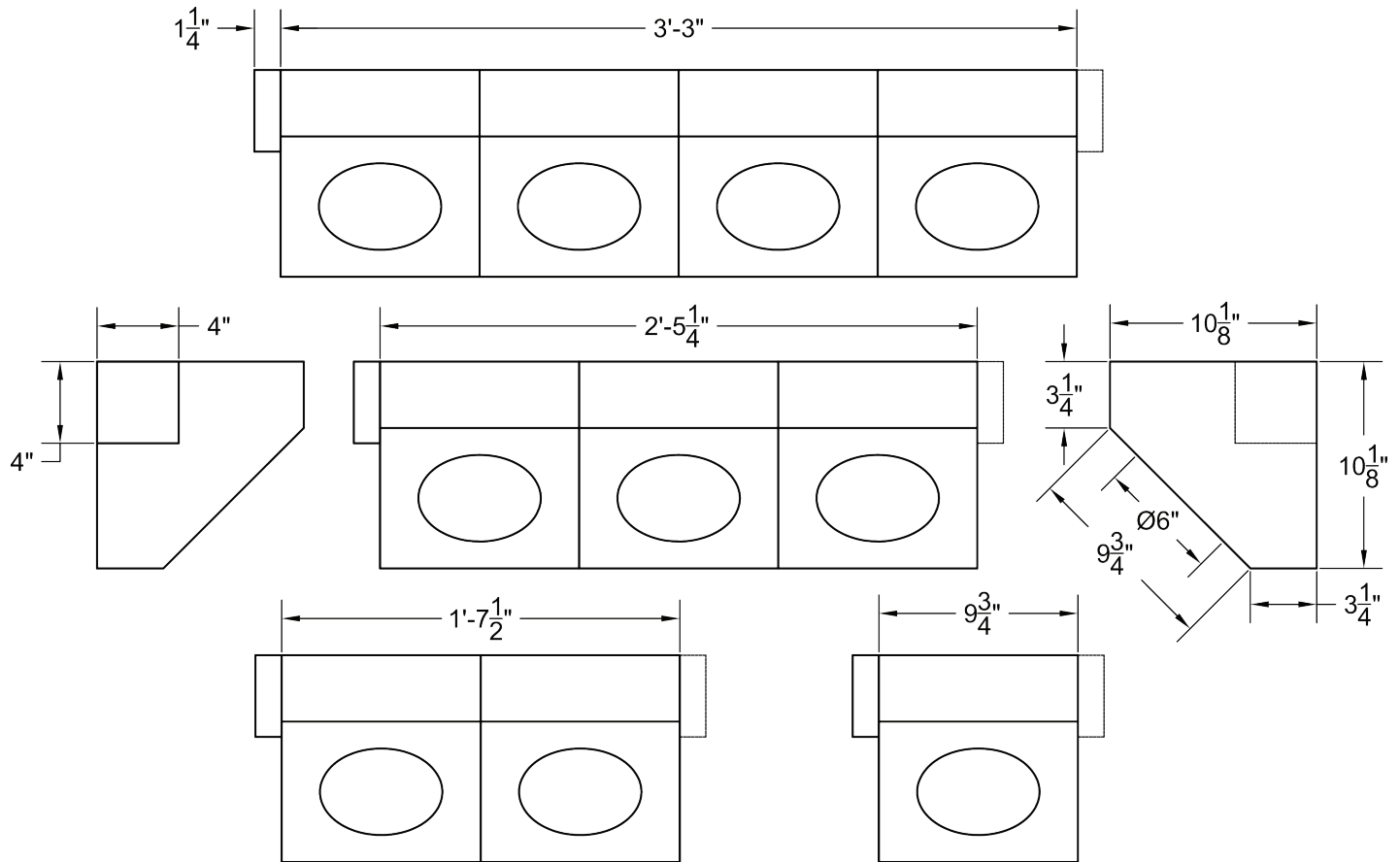
CORNERSTONE SERIES

4100 - 6200 LUMEN SURFACE ADJUSTABLE ACCENT

MANUFACTURED IN THE UNITED STATES - IBEW

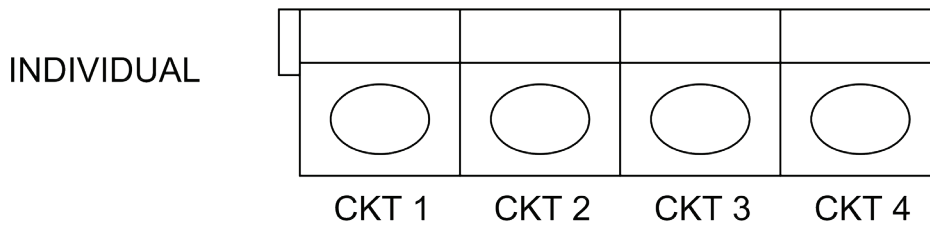
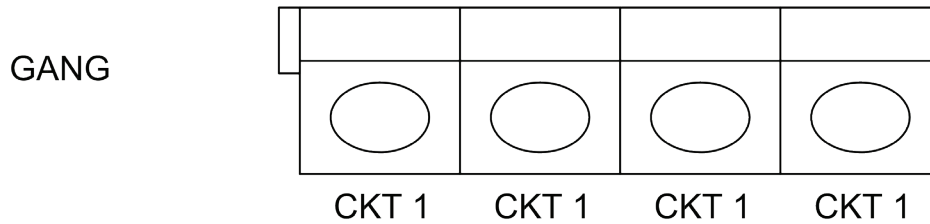
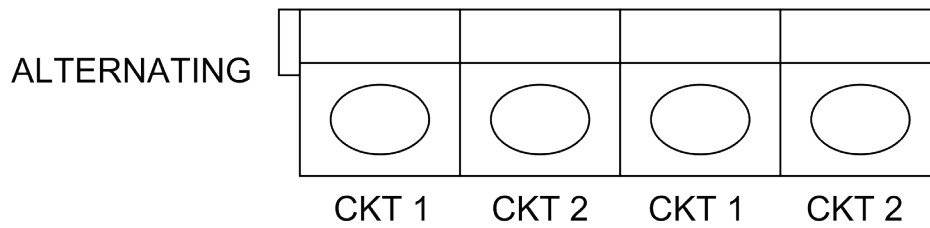


PRODUCT LISTED
BY A NATIONALLY
RECOGNIZED
TESTING
LABORATORY



WIRING SCHEME ILLUSTRATIONS

JUNCTION BOX SHOWN IN LEFT POSITION



CORNERSTONE SERIES

4100 - 6200 LUMEN SURFACE ADJUSTABLE ACCENT

MANUFACTURED IN THE UNITED STATES - IBEW



PHOTOMETRIC DATA

Results for 5,000 Lumen Output. For other Lumen outputs, use the other lumen output multipliers chart.

20° Spot Reflector		
Distance	Beam Spread	Footcandles
10'	3'4"	197
20'	6'8"	50
30'	10'	22
40'	13'4"	12

40° Spot Reflector		
Distance	Beam Spread	Footcandles
10'	7'3"	68
20'	14'6"	17
30'	21'8"	7
40'	29'1"	4

48° Spot Reflector		
Distance	Beam Spread	Footcandles
10'	8'10"	51
20'	17'8"	13
30'	26'6"	5
40'	35'4"	3

64° Spot Reflector		
Distance	Beam Spread	Footcandles
10'	12'7"	33
20'	25'2"	8
30'	37'9"	3
40'	50'4"	2

OTHER LUMEN OUTPUT MULTIPLIERS

FOR 80 CRI LUMEN OUTPUT	FOOTCANDLES
5600	1.12
6200	1.24

FOR 90 CRI LUMEN OUTPUT	FOOTCANDLES
4100	.82
4700	.94
5300	1.06

SPECIFY:

MODEL	LUMENS	SEGMENTS
CO	41 = 4100 * 47 = 4700 * 50 = 5000 ** 53 = 5300 * 56 = 5600 ** 62 = 6200 **	1 = 1-Linear 2 = 2-Linear 3 = 3-Linear 4 = 4-Linear
CRI	COLOR TEMPERATURE	FIXTURE FINISH
80 92	27 = 2700°K 30 = 3000°K 35 = 3500°K 40 = 4000°K	B = Black W = White S = Silver Z = Bronze CC = Custom Color
VOLTAGE	WIRING SCHEME	JUNCTION BOX LOCATION (J-BOX)
120 277	A = Alternating Wiring G = Gang Wiring I = Individually Wired C = Custom Wiring (Consult Factory)	L = Left R = Right
REFLECTOR	DIMMING †	ACCESSORIES
20 = 20° 40 = 40° 48 = 48° 60 = 60°	TE = Trailing Edge *** LE = Leading Edge 010 = 0-10V ND = Non-Dimming	LV14 = Louver FX12-100 = Diffusion FX12-26 = Red Filter FX12-80 = Blue Filter FX12-64 = Light Blue Filter FX12-90 = Green Filter FX12-21 = Amber FX12-10 = Yellow FX12-33 = Pink

Maximum Ambient Temperature: 35°C *92 CRI Only **80 CRI Only ***120V Only † See "Notes on Dimming"

ORDERING INFORMATION

PROJECT:	
LOCATION:	
QUANTITY:	
CONTACT:	
PHONE:	
EMAIL:	

EXAMPLE: CO50-2-80-B-120-G-L-40-LE-LV14

MODEL	LUMENS	SEGMENTS	COLOR TEMPERATURE	FIXTURE FINISH	WIRING SCHEME	J-BOX	REFLECTOR	VOLTAGE	DIMMING	ACCESSORIES