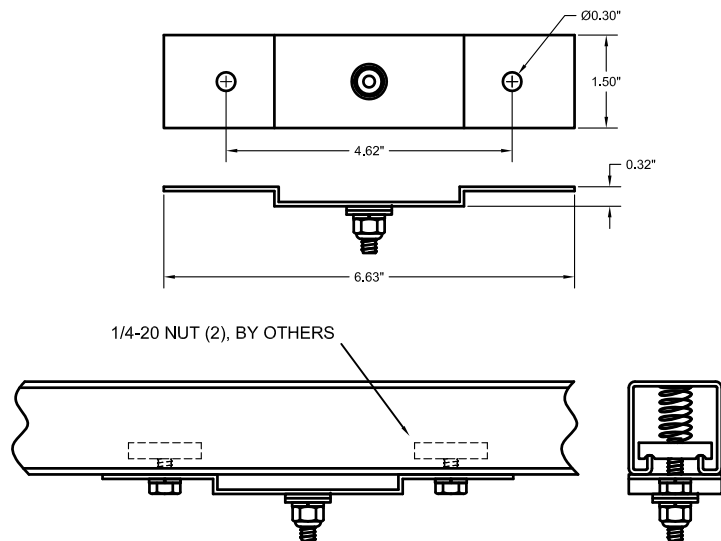
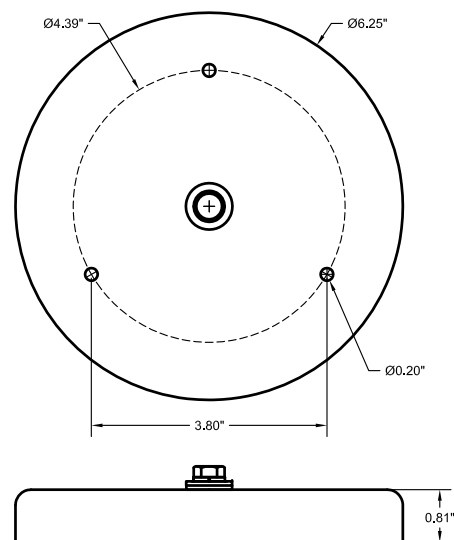


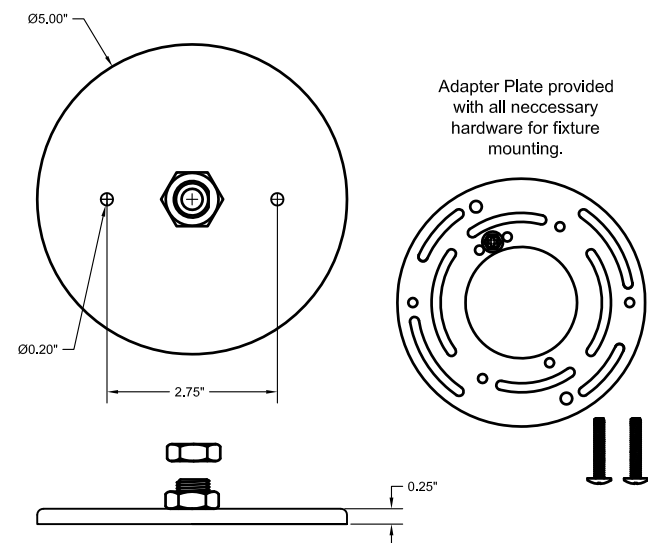
US1 Unistrut Adapter for mounting fixtures to standard Unistrut, Kindorf, or the like. Fixture mounting stud is 1/4"-20 TPI x 1/2", locking nut provided.



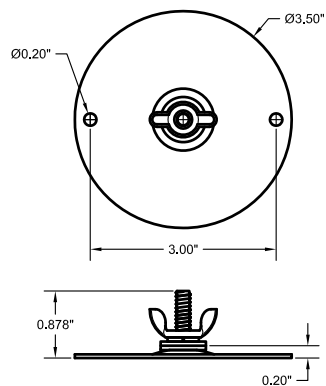
TB4 Table Base for lightweight fixtures can be mounted to any flat surface. Fixture mounting bolt is 1/4"-20 TPI x 1/2\".



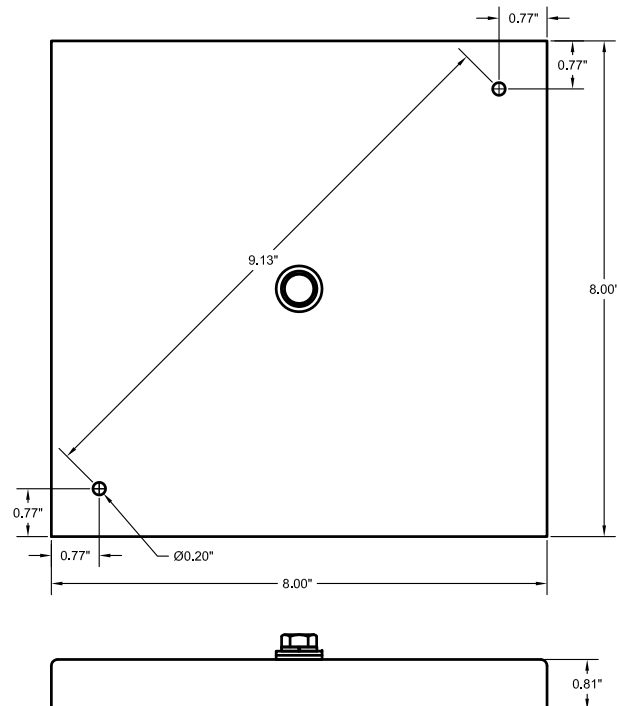
CM1 Canopy can be mounted to any standard electrical box using the provided Adapter Plate.



TB3 Table Base for lightweight fixtures can be mounted to any flat surface. Fixture mounting stud is 1/4"-20 TPI x 3/4\", wingnut provided.



TB8 Table Base for heavy fixtures can be mounted to any flat surface. Fixture mounting bolt is 5/16\"-18 TPI x 1/2\".



CM4 Canopy can be mounted to any standard electrical box using the provided Adapter Plate. Optional fixture mounting nipple with nut is 1/4\"-18.

