

FR30 ASTORIA

SHORT NECK PAR30 LED

MANUFACTURED IN THE UNITED STATES - IBEW



PRODUCT LISTED
BY A NATIONALLY
RECOGNIZED
TESTING
LABORATORY



The FR30 Astoria is perfect for accent lighting where independent dimming of fixtures is key. Featuring a classic cylinder design and an integral potentiometer for on-board dimming. Paired with a Soraa Short Neck lamp, this fixture is capable of dimming below 1%.

By utilizing Soraa's Snap System, there are unlimited possibilities for customizing this fixture. Options include the ability to field change the beam angle (Beam Spreader Snap), alter color temperature (CTO Snap), or to add a louver.

The Enhance Lens Snap can increase the vividness of warm colors (including red, orange and pink and greens). Aim Snaps can bend the beam to a maximum deflection angle of 20°. Linear Snap Lenses can alter the beam to act as a wall wash.

Available in standard black, white and silver finishes. Custom colors are available by request and at an additional charge.

FEATURES

- Performance equivalent to 75W halogen PAR lamp
- Internal self-locking yoke
- Integral dimmer included
- Vented rear spinning
- Numerous mounting options
- Industry leading lumen maintenance and color point stability

LAMP TYPE	WATTS	CRI	LUMENS *
Brilliant	18.5	90 (R9=50)	1230
Vivid	18.5	95 (R9=95)	1000

* Lumens vary depending on color temperature - results for 3000K lamp used above.

CONNECTOR / PLUG TYPES (OPTIONAL)

ED	Edison Connector
TL	Twist Lock Connector
SP	Stage Pin Connector

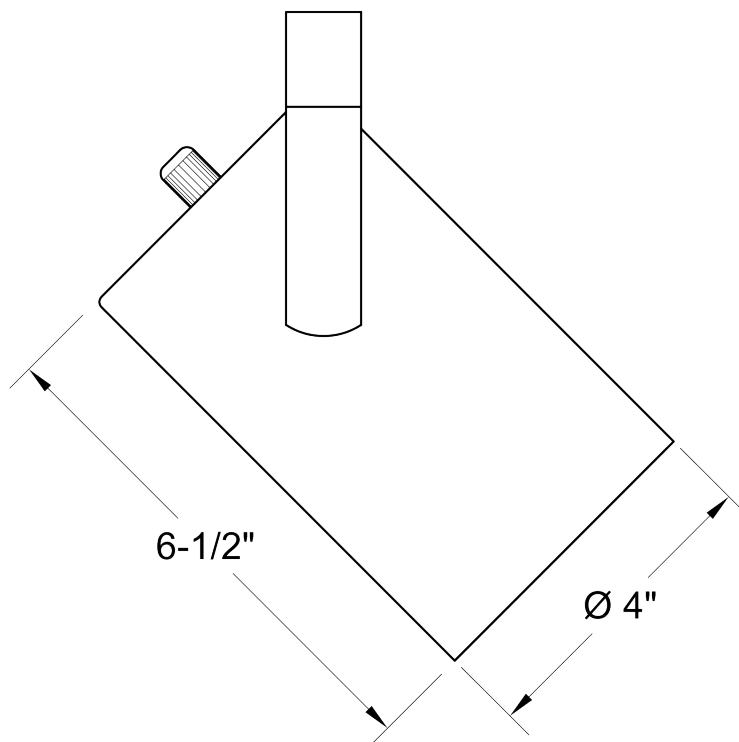
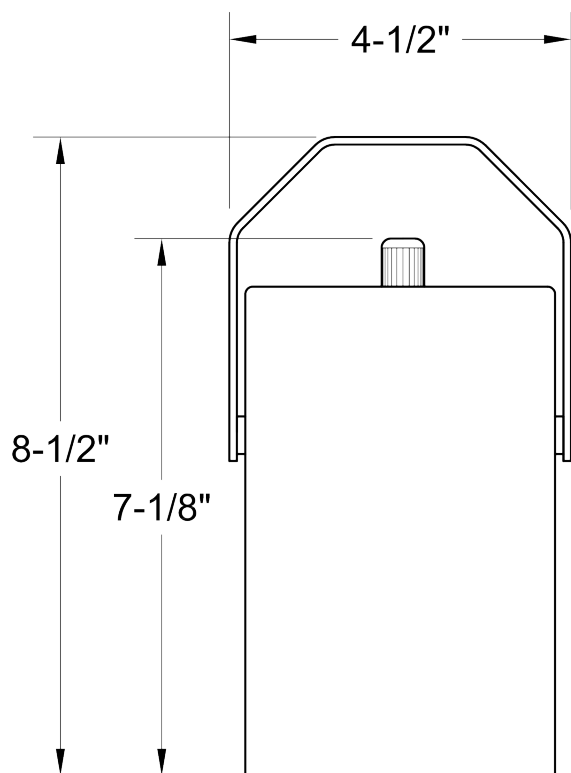
FR30 ASTORIA

SHORT NECK PAR30 LED

MANUFACTURED IN THE UNITED STATES - IBEW



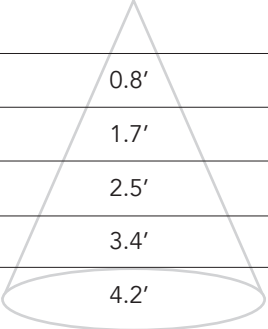
PRODUCT LISTED
BY A NATIONALLY
RECOGNIZED
TESTING
LABORATORY



PHOTOMETRICS

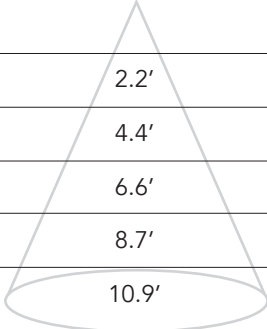
9° Degree Beam

Distance	Beam Spread	Footcandles
3'	0.8'	2036
6'	1.7'	592
9'	2.5'	284
12'	3.4'	166
15'	4.2'	95



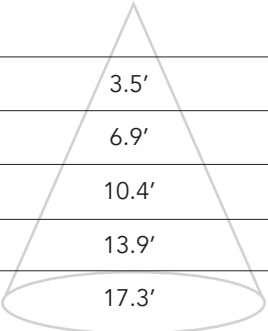
25° Degree Beam

Distance	Beam Spread	Footcandles
3'	2.2'	593
6'	4.4'	173
9'	6.6'	83
12'	8.7'	48
15'	10.9'	28



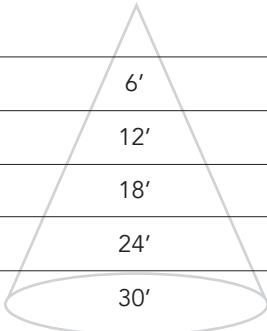
36° Degree Beam

Distance	Beam Spread	Footcandles
3'	3.5'	275
6'	6.9'	80
9'	10.4'	38
12'	13.9'	22
15'	17.3'	13



60° Degree Beam

Distance	Beam Spread	Footcandles
3'	6'	120
6'	12'	35
9'	18'	17
12'	24'	10
15'	30'	6



FR30 ASTORIA

SHORT NECK PAR30 LED

MANUFACTURED IN THE UNITED STATES - IBEW



MOUNTING OPTIONS

AD1 Track Adapter for 1-circuit track. 120V. For use with lightweight fixtures.

DT2 Track adapter for SpecTrack 2-Circuit data track. 120V.

TA2 Track adapter for G-Series specification grade 2-circuit track. 120V.

TA3 Track adapter for G-Series specification grade 3-circuit track. 120V.

CM4 Canopy Mount

US1 6-5/8" x 1-1/2" Unistrut Adapter

TB4 6-1/4" Portable wall mount/table base floor, wall or table use.

MC Light duty pipe clamp for small fixtures. For pipes up to 1-5/16" O.D.

MN Medium duty pipe clamp for small to large fixtures. For pipes up to 2" O.D.

ACCESSORIES

01145	25° Beam Spreader Snap
01147	36° Beam Spreader Snap
01149	60° Beam Spreader Snap
01595	10°-36° Linear Snap
03261	10°-60° Linear Snap
01597	36°X36° Flat Top Snap
01151	40° Cutoff Louver
03257	20° Maximum Deflection Snap
01153	1/4 Color Temperature Shift Snap
01155	1/2 Color Temperature Shift Snap
01157	3/4 Color Temperature Shift Snap
03283	Enhance Snap
02185-C	Color Snap (Specify Color)

NOTES ON DIMMING

Visit tslight.com/resources or scan the QR Code.



SPECIFY:

MODEL	CRI	COLOR TEMPERATURE
FR30	90 95	27 = 2700K 30 = 3000K
FINISH	MOUNTING OPTIONS	ACCESSORIES
B = Black W = White S = Silver CC = Custom Color	See Mounting Options for Ordering Codes	See Accessory Options for Ordering Codes

* All fixtures sold with 10° beam angle lamps – use Beam Spreaders to achieve desired angle.

ORDERING INFORMATION

PROJECT:	
LOCATION:	
QUANTITY:	
CONTACT:	
PHONE:	
EMAIL:	

EXAMPLE: FR30-9027-W-AD1-01145

MODEL	CRI	COLOR TEMPERATURE	FINISH	MOUNTING OPTIONS	ACCESSORIES
FR30					