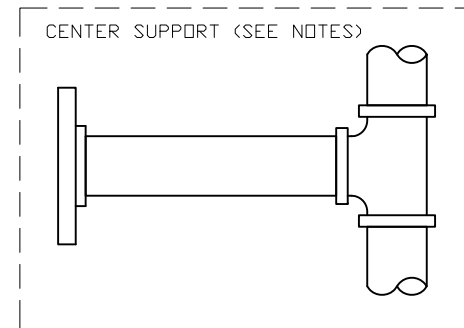
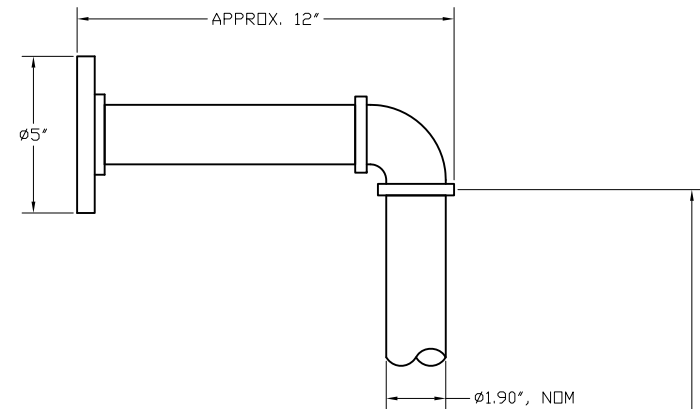
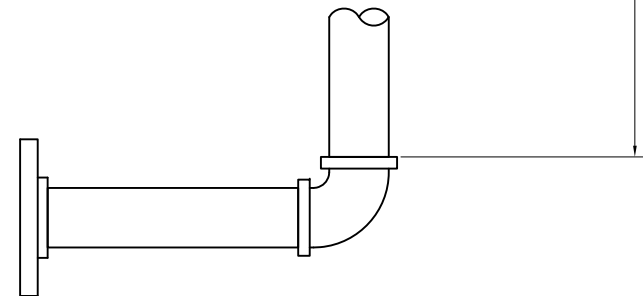


NOTES:

1. ALL TORMENTORS FINISHED IN POWDER COATED BLACK ENAMEL UNLESS OTHERWISE SPECIFIED.
2. ALL FLANGE HOLES DESIGNED TO ACCOMMODATE 1/2" BOLT SIZE HARDWARE.
3. LONGER TORMENTORS OR TORMENTORS INTENDED FOR HEAVY FIXTURES PROVIDED WITH CENTER SUPPORTS - CONSULT FACTORY.
4. ALL TORMENTORS CONSTRUCTED OF 1-1/2" TRADE SIZE IRON PIPE (1.90" OD NOMINAL) AND FITTINGS.
5. MOUNTING HARDWARE PROVIDED BY OTHERS.
6. MOUNTING HARDWARE, METHOD AND MEANS TO BE DETERMINED BY OTHERS.



TO SPEC



THIS DRAWING IS THE PROPERTY OF TIMES SQUARE LIGHTING, INC. ANY UNAUTHORIZED USE IS PROHIBITED. SPECIFICATIONS SUBJECT TO CHANGE WITHOUT NOTICE. COPYRIGHT © TIMES SQUARE LIGHTING, INC. 2015. ALL RIGHTS RESERVED.

-	-	-	-	TIMES SQUARE LIGHTING INC. 5 HOLT DR., STONY POINT, NY 10980 845-947-3034 FAX: 845-947-3047	DRAWING FILE:	FILE: tormentor		
-	-	-	-		TORMENTOR PIPE SPEC DIM.		DWG BY: TPT	APPR: -
-	-	-	-				DATE: 04-12-15	
-	-	-	-		PROJECT:		SCALE: none	SHEET 1 OF 1
-	-	-	-				TSL P/N:	REV: -
REV	DATE	DESCRIPTION	BY				-	