

MPRO MOSAIC PROFILE

1000 LUMEN FULL COLOR TUNABLE WHITE PROJECTOR

MANUFACTURED IN THE UNITED STATES - IBEW



PRODUCT LISTED
BY A NATIONALLY
RECOGNIZED
TESTING
LABORATORY



The Mosaic Profile is a color mixing and variable white pattern and framing projector with high-CRI output that is tunable between 1650K-8000K. Featuring framing shutters and DMX control, it is designed to blend into any architectural space, making it a perfect choice for museums, retail applications and restaurants.

- 1000 Lumen Output
- 4 DMX Channels
- **Tunable Range:** 1650 - 8000K tunable white.
- 90+ CRI
- Dimmable from 100 - 0.1% at constant CCT
- <2 MacAdam ellipse over 50,000 hour life
- On-board Bluetooth Low Energy (BLE) included in every fixture

FEATURES

- 20° - 40° beam spread
- Framing shutters included
- Stock or custom, steel or glass patterns
- Numerous mounting options and accessories

CONSTRUCTION

- Steel housing with black, white or silver finish
- Accepts up to 2 accessories
- **Weight:** 5.5 lbs.

ELECTRICAL

- Integral electronic driver
- Meets FCC 47 CFR Part 15/18 Requirements
- 90-305 VAC, 50/60 Hz
- **Power Consumption:** 28W
- Do not install on a circuit containing a dimmer.
- DMX Addressing is RDM-only (No Onboard DMX)

EMITTER 5-YEAR WARRANTY

The warranty on the LED Emitter used in this Times Square Lighting product shall have a five year warranty from the date of purchase.

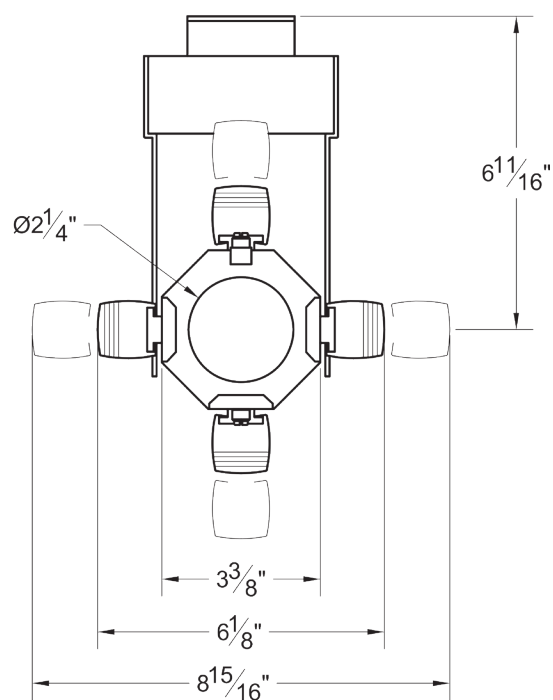
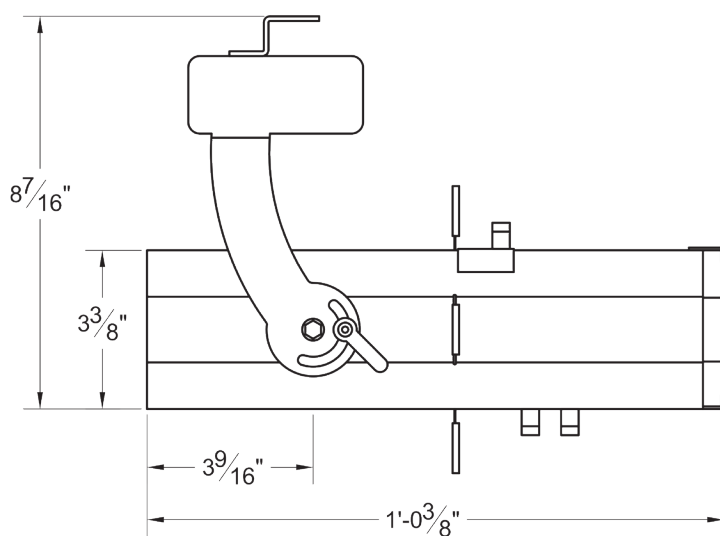
Maximum Ambient Temperature: 40° C

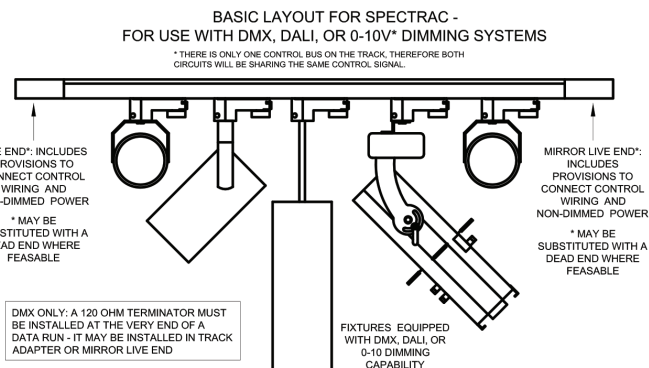
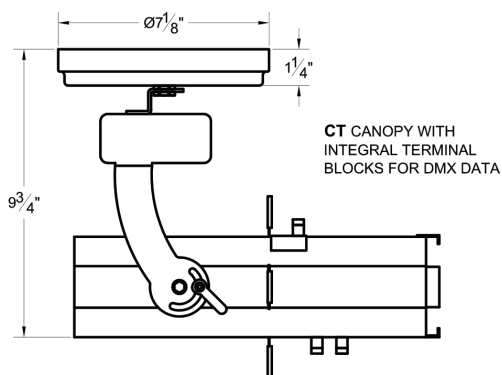
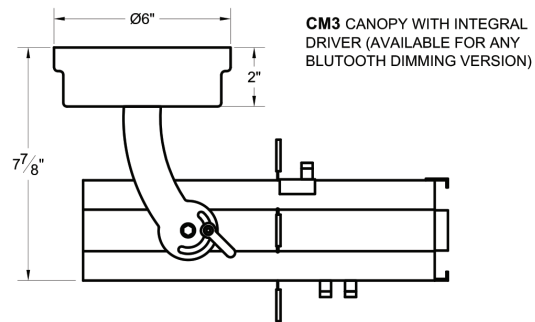
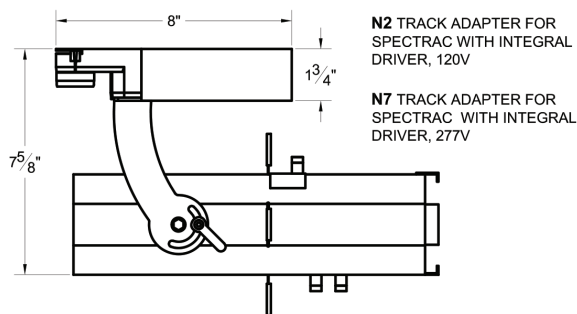
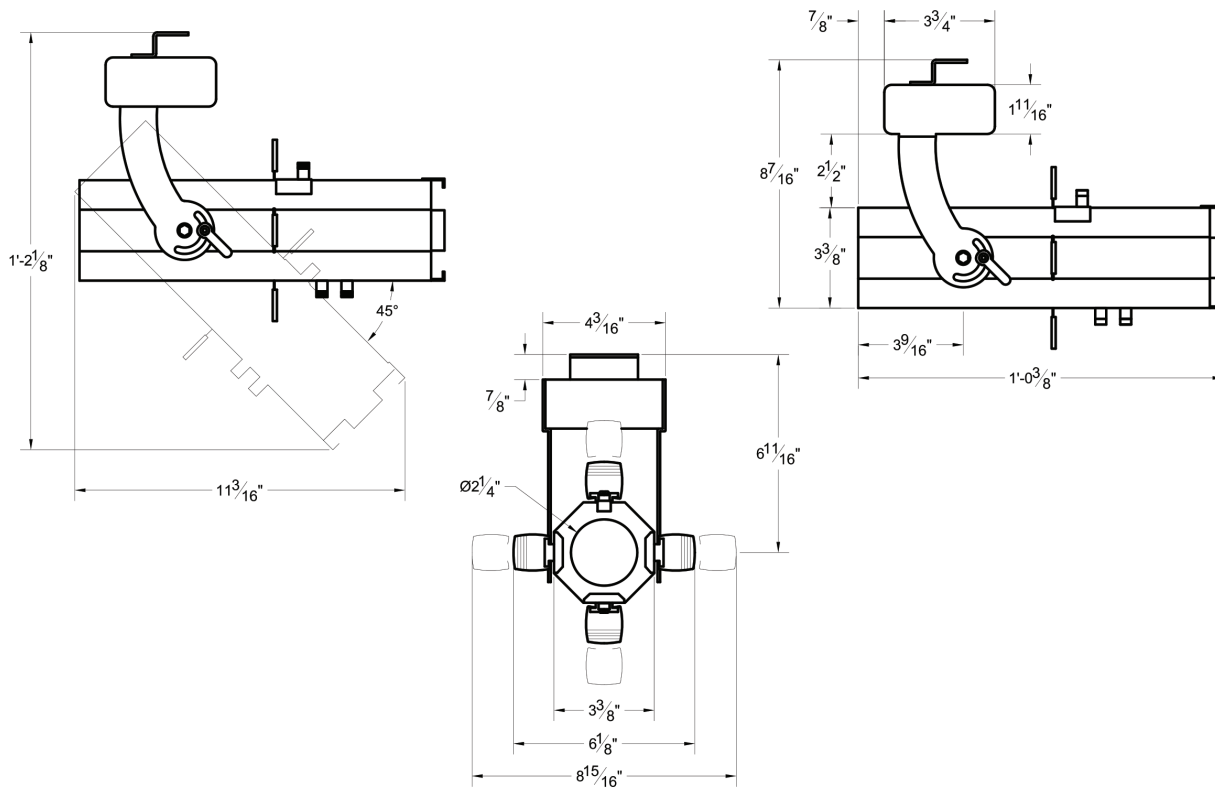
MPRO MOSAIC PROFILE

1000 LUMEN FULL COLOR TUNABLE WHITE PROJECTOR

MANUFACTURED IN THE UNITED STATES - IBEW

PRODUCT LISTED
BY A NATIONALLY
RECOGNIZED
TESTING
LABORATORY





MPRO MOSAIC PROFILE

1000 LUMEN FULL COLOR TUNABLE WHITE PROJECTOR

MANUFACTURED IN THE UNITED STATES - IBEW

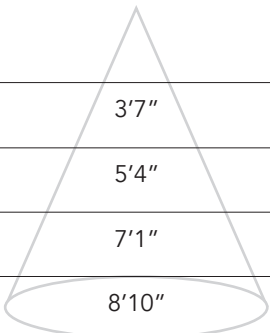
PRODUCT LISTED
BY A NATIONALLY
RECOGNIZED
TESTING
LABORATORY



PHOTOMETRIC DATA

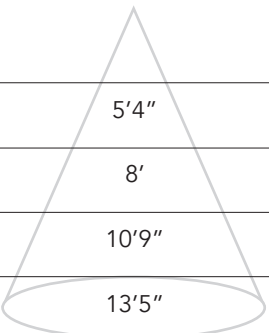
20° Degree Setting

Distance	Beam Spread	Footcandles
10'	3'7"	50
15'	5'4"	22
20'	7'1"	13
25'	8'10"	8



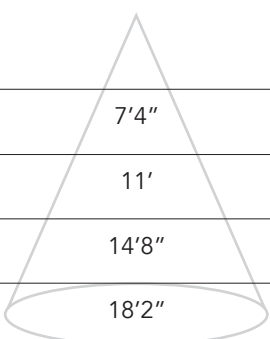
30° Degree Setting

Distance	Beam Spread	Footcandles
10'	5'4"	31
15'	8'	14
20'	10'9"	8
25'	13'5"	5



40° Degree Setting

Distance	Beam Spread	Footcandles
10'	7'4"	22
15'	11'	10
20'	14'8"	6
25'	18'2"	4



MOUNTING OPTIONS	ACCESSORIES	
GAC Track adapter for global pulse track.	CF6	Color Frame
DT2 Track adapter for SpecTrac 2-Circuit data track, 120V.	SN6	Snoot/Hood
HDT2 Track adapter for SpecTrac 2-Circuit data track, 277V.	PH6	Pattern Holder
US1 6 5/8" x 1 1/2" Unistrut adapter.	PD6	Pattern Donut
MN Medium duty pipe clamp for small to large fixtures. For pipes up to 2" O.D.	SPE	Stock Pattern Steel
PC9M Heavy duty pipe clamp for large, heavy fixtures. For pipes up to 2" O.D.	CPE	Custom Pattern Steel
N2 Track adapter with integral driver for SpecTrac 2-Circuit data track, 120V.	GPE	Custom Pattern Glass
N7 Track adapter with integral driver for SpecTrac 2-Circuit data track, 277V.	DF6	Dichroic Color Filter
CM4 Canopy mount (Bluetooth, 010V dimming only)	GF6-702	UV Blocking Filter
DXTC Canopy mount with terminal block for DMX.	CC18	Coiled Cord
	5300	Mini Spin
	EXTENSION WANDS	
	SP 12	12" Stem
	SP 18	18" Stem
	SP 24	24" Stem
	SP X	Custom Length

MPRO MOSAIC PROFILE

1000 LUMEN FULL COLOR TUNABLE WHITE PROJECTOR

MANUFACTURED IN THE UNITED STATES - IBEW

PRODUCT LISTED
BY A NATIONALLY
RECOGNIZED
TESTING
LABORATORY



SLINGSHOT

The Slingshot allows you to cast the output of a Times Square Lighting ellipsoidal at a right angle. This allows flexibility in situations when the fixture is mounted horizontally but the desired aiming angle is vertical (or vice versa).

- LENGTH: 6-3/4"
- WIDTH: 4"
- DEPTH: 4"
- RANGE OF MOTION: 0° to 44°

MODEL	COLOR
SLMB	Black Slingshot
SLMW	White Slingshot

PATTERNS

For standard and custom patterns, see the pattern specification sheet.
QR Code is provided below.



NOTES ON DIMMING

Visit tslight.com/resources or scan the QR Code.



SPECIFY:

MODEL	FINISH	MOUNTING	DIMMING †
MPRO	B = Black W = White S = Silver CC = Custom Color	See Mounting Options for Ordering Codes	BT = Bluetooth DX = DMX / RDM

Maximum Ambient Temperature: 40°C

† See "Notes on Dimming"

ORDERING INFORMATION

PROJECT:	
LOCATION:	
QUANTITY:	
CONTACT:	
PHONE:	
EMAIL:	

EXAMPLE: MPRO-B-N4-DX

MODEL	FINISH	MOUNTING	DIMMING
MPRO			