

TS-CO25 CANARSIE

100 RGBW MINI PROFILE SPOT



The Canarsie pairs a high-output 100-watt LED light engine with a zoom lens system from 15 -30 degrees. It's DMX controlled RGBW emitter makes this unit ideal for small stage applications.

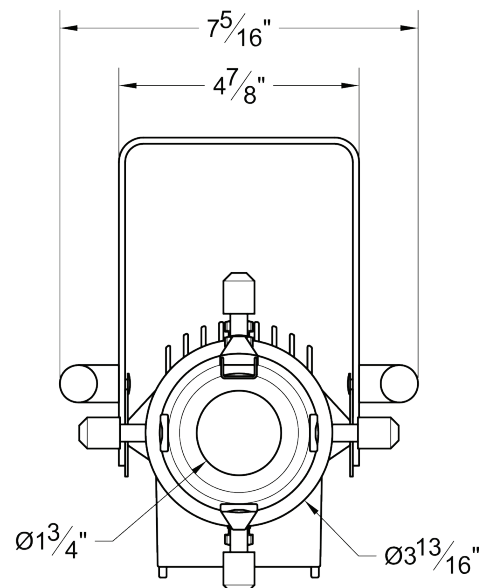
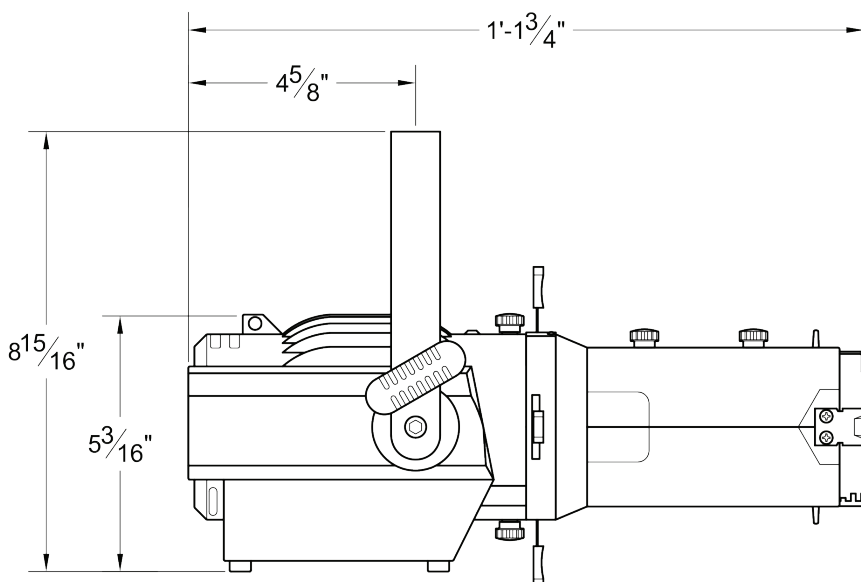
A pattern (gobo) slot is included with the unit. Patterns can be ordered as standard or custom by sending us your PDF.

ELECTRICAL

- Power Consumption: 100-watts
- Voltage: AC 100-240-volts , 50-60HZ

FEATURES

- RGBW 4-in-1 chip
- 95 CRI
- 50,000 hour LED life
- Zoom Lens: 15° to 30°
- 0-100% dimming
- Adjustable strobe rate 1-25 times per second
- Fixture body, die-cast aluminum
- Weight: 6 lbs.



TS-CO25 CANARSIE

100 RGBW MINI PROFILE SPOT



MOUNTING OPTIONS

MNB	Clamp for pipe up to 2" OD.
PC9C	Heavy duty pipe clamp for large, heavy fixtures. For pipes up to 2" OD.
DT2	Track adapter for SpecTrack 2-Circuit data track. 120V (Two required).
TB8	Table base for heavy fixtures can be mounted to any flat surface. Fixture mounting bolt is 5/16" -18 TPI x 1/2"

ACCESSORIES

PH18	Pattern Holder (outside diameter - 37.5 mm; viewing area - 22.5 mm)
HD3	Snoot / Hood
DMX55	XLR Splitter (required clamp mount)
CF3	Color Frame

SPECIFY:

MODEL	COLOR	MOUNTING
TS-CO25	B = Black W = White	See Mounting Options for Ordering Codes.

ORDERING INFORMATION

PROJECT:	
LOCATION:	
QUANTITY:	
CONTACT:	
PHONE:	
EMAIL:	

EXAMPLE: TS-CO25 -B-DT2

MODEL	COLOR	MOUNTING
TS-CO25		