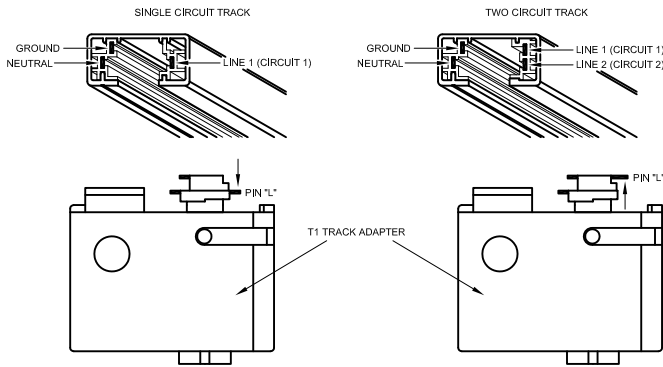
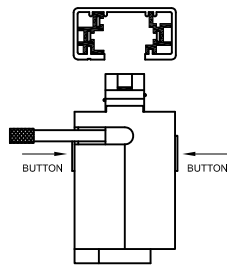


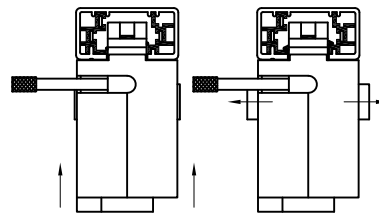
T1 THESE INSTRUCTIONS ARE FOR THE PROPER
INSTALLATION & USE OF THE T1 TRACK ADAPTER



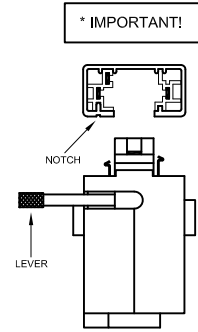
STEP 1:
With a screwdriver or pliers, push PIN "L" down for circuit 1, or up for circuit 2. NOTE: Single circuit track is always circuit 1.
CAUTION! Forcing a track adapter into single circuit track when it is set up for circuit 2 will damage both the track and the adapter!



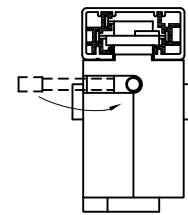
STEP 3:
Fully depress both BUTTONS on side of track adapter.



STEP 4:
Insert track adapter into track and release BUTTONS. Fixture will now be locked into the track.



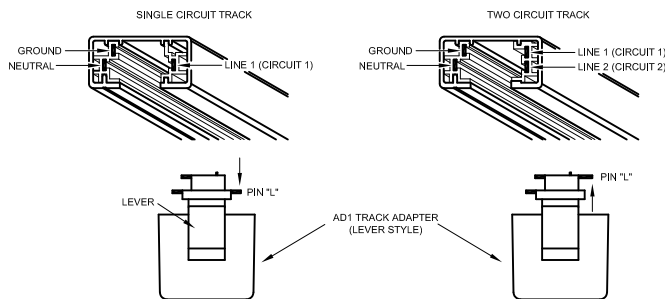
STEP 2:
* CAUTION! FAILURE TO FOLLOW THIS STEP EXACTLY MAY PERMANENTLY DAMAGE THE ADAPTER!
Rotate LEVER completely until it is perpendicular with the side of the track adapter, then align the track adapter such that the LEVER is on the SAME SIDE of the track as the NOTCH.



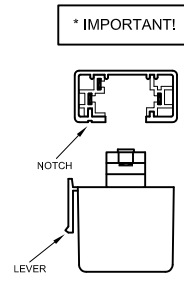
STEP 5:
Fully engage electrical contacts by gently rotating lever 90° clockwise. CAUTION! Operating fixture with contacts that are not fully engaged can damage track, track adapter, or both.

AD1 THESE INSTRUCTIONS ARE FOR THE PROPER INSTALLATION & USE OF THE AD1 TRACK ADAPTER. THERE ARE 2 TYPES OF AD1 TRACK ADAPTERS, THE LEVER STYLE AND THE RETRACTABLE SLEEVE STYLE. USE THE DIAGRAMS BELOW TO DETERMINE WHICH ADAPTER YOU HAVE, & FOLLOW THE INSTRUCTIONS ACCORDINGLY.

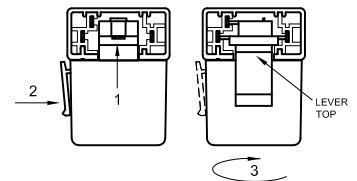
LEVER STYLE



STEP 1:
With a screwdriver or pliers, push PIN "L" down for circuit 1, or up for circuit 2. NOTE: Single circuit track is always circuit 1.
CAUTION! Forcing a track adapter into single circuit track when it is set up for circuit 2 will damage both the track and the adapter!

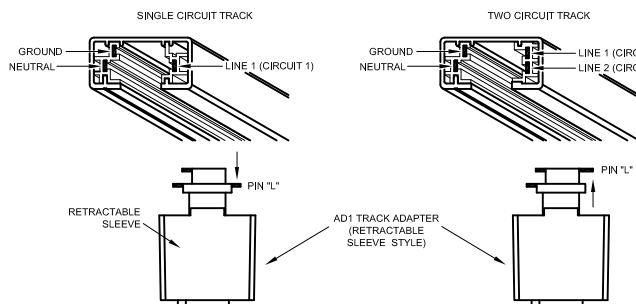


STEP 2:
* CAUTION! FAILURE TO FOLLOW THIS STEP EXACTLY MAY PERMANENTLY DAMAGE THE ADAPTER!
Align the track adapter such that the LEVER is on the SAME SIDE of the track as the NOTCH.

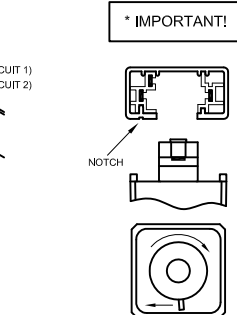


STEP 3:
Insert track adapter into track, squeeze LEVER, and rotate adapter 90° clockwise. Release the LEVER and insure that the LEVER TOP is fully positioned inside the track channel. This will lock the track adapter in place.

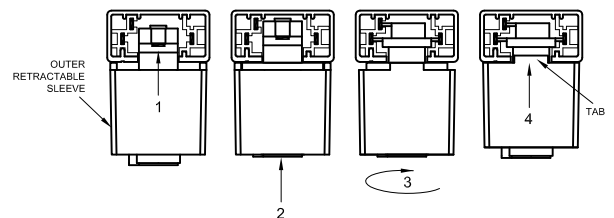
RETRACTABLE SLEEVE STYLE



STEP 1:
With a screwdriver or pliers, push PIN "L" down for circuit 1, or up for circuit 2. NOTE: Single circuit track is always circuit 1. CAUTION! Forcing a track adapter into single circuit track when it is set up for circuit 2 will damage both the track and the adapter!



STEP 2:
* CAUTION! FAILURE TO FOLLOW THIS STEP EXACTLY MAY PERMANENTLY DAMAGE THE ADAPTER!
Align the track adapter such that the straight arrow on the track adapter bottom is pointing toward the NOTCH of the track.



STEP 3:
Insert track adapter into track, then push fixture upwards toward track such that track adapter plunges into its outer sleeve approx. 1/8". While maintaining upwards pressure, rotate adapter 90° clockwise. Release the SLEEVE and insure that the TABS are fully positioned inside the track channel. This will lock the track adapter in place.