



Tucker Series

900 - 3000 LUMENS



5 Holt Drive
Stony Point, NY 10980
845-947-3034
info@tslight.com

Manufactured in the USA - IBEW

PRODUCT LISTED
BY A NATIONALLY
RECOGNIZED
TESTING
LABORATORY



Features

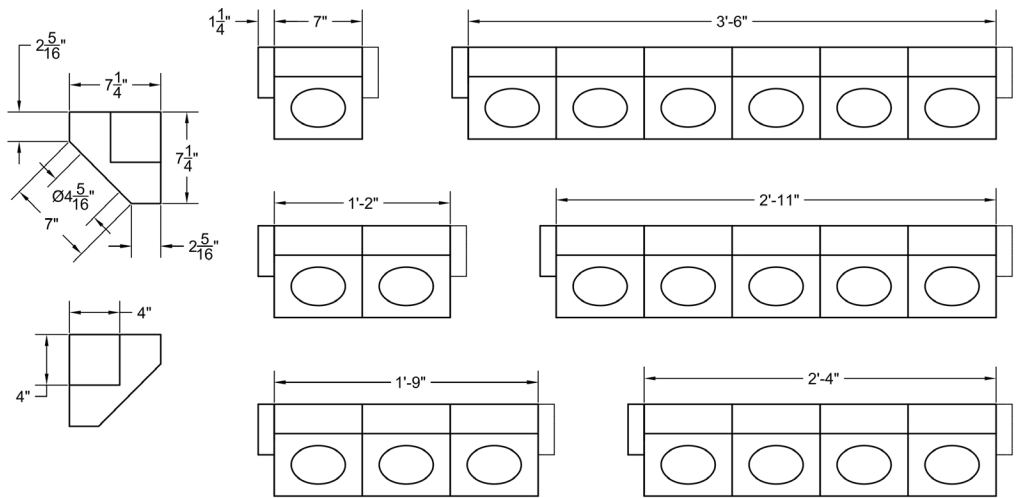
- 100,000 Hour life per LED
- 20°, 40°, and 60°
Field-changeable reflectors
- **Choice of color temperatures:** 2700° K, 3000°K, 3500°K, 4000°K, 5000°K, 5700°K, 6500°K
- Each LED is individually mounted for up to 15° pan and tilt
- Accepts a variety of lenses and accessories.
- Fully enclosed wiring compartment
- Black, white, silver and bronze available - custom colors upon request

Dimming

- **Trailing edge (ELV):** 120V / 277V
- **Leading edge (Triac):** 120V only
- **0-10V:** 120V / 277V

Ideal for schools, houses of worship, malls and hotels where a high ceiling line requires a compact, architectural fixture. The Tucker Series was designed to mount snug, vertically wall-to-wall, or horizontally ceiling-to-wall. The Tucker Series can be ordered as a single cell or multiple cell housing. Numerous lumen packages, color temperatures and beam spreads are available.

Black, White, Silver and Bronze finishes are standard. Custom colors are available upon request. We do follow the RAL color chart.



LED

- Cree XLamp LED array
- **Color temp options:** 2700° K, 3000°K, 3500°K, 4000°K, 5000°K, 5700°K, 6500°K
- CRI: 80 standard or 92 optional
- Lumen maintenance: 90% of initial lumen output at 33,000 hours on LM-80 testing
- No UV or IR

Model	CRI	Total Wattage	Delivered Lumens	Efficacy (Lm/W)
TU9	80 / 92	5.6 / 6.4	900 / 900	161 / 141
TU12	80 / 92	7.7 / 9.0	1200 / 1200	156 / 133
TU15	80 / 92	9.7 / 11.4	1500 / 1500	155 / 132
TU18	80 / 92	11.4 / 15.0	1800 / 1800	158 / 120
TU20	80 / 92	13.3 / 15.8	2000 / 2000	150 / 127
TU25	80 / 92	18.0 / 23.4	2500 / 2500	139 / 107
TU27	92	25.0	2700	108
TU30	80	23.4	3000	128

Photometric Data

Distance	20° Spot Reflector Beam Spread	Footcandles						
		TU9	TU12	TU15	TU18	TU20	TU25	TU30
5'	1.7"	126	170	220	241	268	344	440
10'	3.5"	31	43	55	60	67	86	110
15'	5.3"	14	19	24	27	30	38	49
20'	7.1"	8	11	14	15	17	22	28
25'	8.8"	5	7	9	10	11	14	18
30'	10.6"	-	6	6	7	7	10	12

Distance	40° Medium Flood Reflector Beam Spread	Footcandles						
		TU9	TU12	TU15	TU18	TU20	TU25	TU30
5'	3.6"	74	100	130	144	160	204	260
10'	7.3"	19	25	33	36	40	51	65
15'	10.9"	8	11	15	16	18	23	29
20'	14.6"	5	6	8	9	10	13	16
25'	18.2"	-	-	5	6	6	8	10
30'	22.2"	-	-	-	-	-	6	7

Distance	60° Flood Reflector Beam Spread	Footcandles						
		TU9	TU12	TU15	TU18	TU20	TU25	TU30
5'	5.7"	39	54	70	85	97	128	148
10'	11.6"	10	14	18	21	24	32	37
15'	17.3"	5	6	8	9	11	14	16
20'	23.1"	-	5	5	5	6	8	9
25'	28.9"	-	-	-	-	5	5	6
30'	35.2"	-	-	-	-	-	-	-

HOW TO SPECIFY:

MODEL	LUMENS	NUMBER OF SEGMENTS
TU	9R = 900 12R = 1200 15R = 1500 18R = 1800 20R = 2000 25R = 2500 27R = 2700* 30R = 3000** 35R = 3500**	1 = 1-Linear 2 = 2-Linear 3 = 3-Linear 4 = 4-Linear 5 = 5-Linear 6 = 6-Linear
CRI	COLOR TEMPERATURE	FIXTURE FINISH
80 92	27 2700°K 30 3000°K 35 3500°K 40 4000°K 50 5000°K 57 5700°K 65 6500°K	B = Black W = White S = Silver Z = Bronze CC = Custom
VOLTAGE	WIRING SCHEME (See Below)	JUNCTION BOX LOCATION
100 ^{††} 120 240 277	A = Alternating Wiring G = Gang Wiring I = Individually Wired C = Custom Wiring (Consult Factory)	L = Left R = Right
REFLECTOR	DIMMING †	ACCESSORIES
20 = 20° 40 = 40° 60 = 60°	TE = Trailing Edge*** LE = Leading Edge 010 = 0-10V ND = Non-Dimming	LV22 Louver FX22-26 Red Filter FX22-80 Blue Filter FX22-64 Light Blue Filter FX22-90 Green Filter FX22-21 Amber FX22-10 Yellow FX22-33 Pink DF22 Dichroic Color Filter X00517 Accessory Holder

Maximum ambient temperature: 35°C

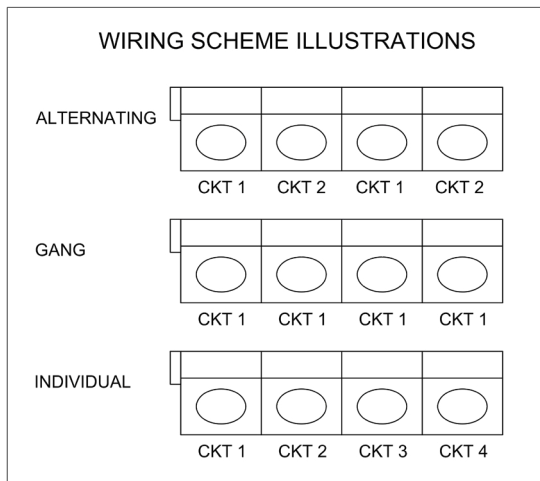
* 92 CRI Only

** 80 CRI Only

*** 120V Only

† See "Notes on Dimming" below

†† Non-Dim or 0-10V dimming only



EXAMPLE: TU30-2-80-30-B-120-G-L-40-LE-LV22

MODEL	LUMENS	NUMBER OF LAMPS	CRI	COLOR TEMPERATURE	FIXTURE FINISH	VOLTAGE	WIRING SCHEME	J-BOX	REFLECTOR	DIMMING	ACCESSORIES

* For notes on dimming, please [click here](#).