

Connector Strips



5 Holt Drive
Stony Point, NY 10980
845-947-3034
www.tslight.com

Times Square Lighting Connector Strips are custom built to specification and are used to distribute permanent lighting circuits throughout an installation. Exterior dimensions are 3" x 4" at a length of 2' minimum.

Connectors can be flush or pigtailed and come in a variety of styles. Can be mounted vertically or horizontally, dead hung or from moveable rigging systems. Ideal for theatres, television studios or any application requiring connections for portable lighting fixtures.

Features

- Custom lengths and circuitry
- Variety of connector styles
- Connectors can be flush or pigtailed
- High visibility circuit numbering
- 18-gauge steel construction
- Mounting brackets included
- Shipped in 8' lengths maximum, wired through and folded
- DMX, gateway and network ports.
- Pigtails 18" standard. Other lengths available at additional cost.

Connectors



Three Pin Stage Plug
1 (flush)
5 (pigtail)



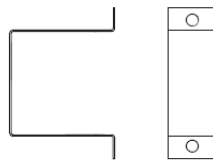
Edison Plug
4 (flush duplex)
7 (pigtail)



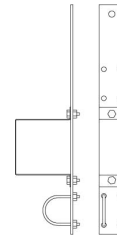
Twist Lock
2 (flush 20A)
6 (pigtail 20A)
8 (flush 15A)

Mounting

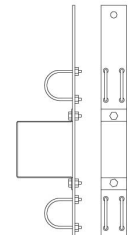
*Mounting strap holds up to 2" O.D. pipe. Number of sets required is determined by length of connector strip. A 5' strip or less will get 2 mounting strap & bracket assemblies. An additional set will be provided for every additional 5' of connector strip ordered. Pipe supplied by others.



Wall/Ceiling Bracket
CS-5004



***Single Pipe**
CSSP (Cable Mount)
CSSPT (Threaded Rod Mount)



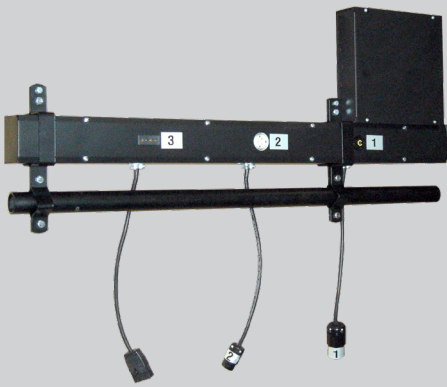
***Double Pipe**
CSDP (Cable Mount)
CSDPT (Threaded Rod Mount)

Ordering Matrix

Model	Length (ft)	# of Connectors	# of Circuits	Connector	Data (Optional)
CS				See Connectors	DX3 3-pin DMX DX5 5-pin DMX ETH Ethernet GATE Gateway DXW Wireless DMX Transceiver
Mounting				Feed	
See Mounting				L Stage Left C Center R Stage Right	

Example: CS-24-20-9-6-CSSP-R

CS-_____



Manufactured in the USA - IBEW

PRODUCT LISTED
BY A NATIONALLY
RECOGNIZED
TESTING
LABORATORY

*Specification sheets are subject to change without notice.

*The data output is a single connector (or gateway port) in its own housing located at the feed end of the connector strip.