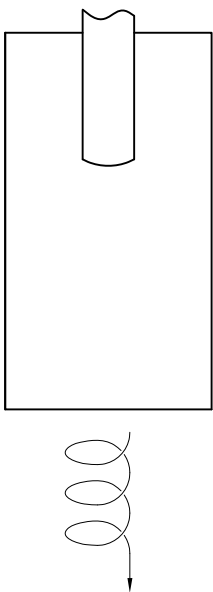


**MOSAIC ACT20 ADAPTER RING (HD22-2000) & SNOOT (HD6)
INSTALLATION INSTRUCTIONS**

NOTE: THESE 2 ITEMS COMPRISE KIT PART NUMBERS: HD22 (BLACK), HD22W (WHITE) & HD22S (SILVER)

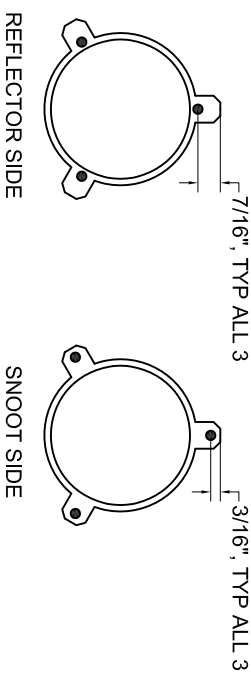
STEP 1:

Carefully remove the front ring from the fixture by rotating the ring counter-clockwise.



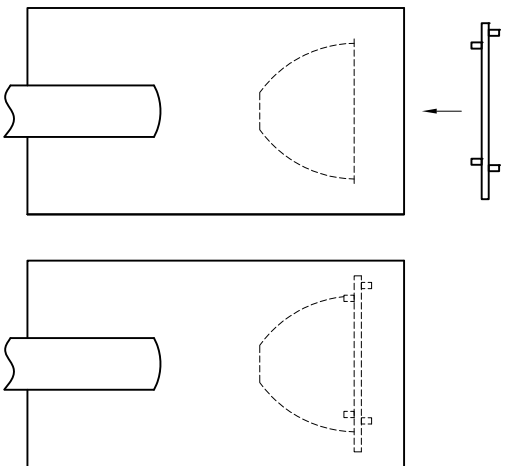
STEP 2:

Familiarize yourself with the HD22-2000 adapter ring. The adapter ring has 2 different sides: the "reflector side" and the "snoot side", as shown below:



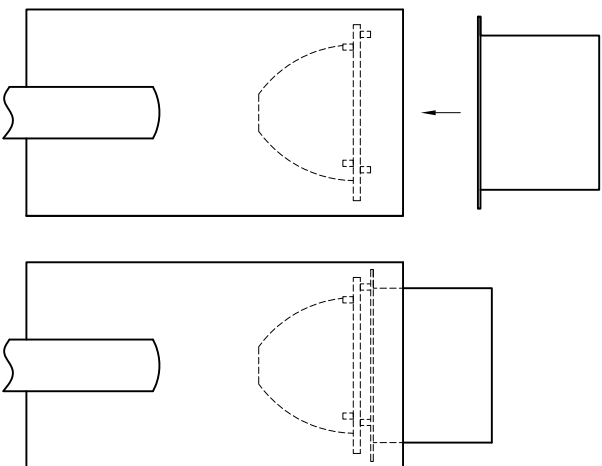
STEP 3:

Install the adapter ring into the fixture with the "reflector side" facing the reflector. The ring should be fully seated against the outer rim of the reflector.



STEP 4:

Place the snoot on top of the three reflector ring studs as shown.



STEP 5:

Reinstall the front ring. **CAUTION:** Take care such that the front ring does not get cross-threaded onto the fixture body!

